

Product datasheet for **TA322392**

NTAL (LAT2) Rabbit Polyclonal Antibody

Product data:

Product Type:	Primary Antibodies
Applications:	IHC
Recommended Dilution:	IHC: 10-50 Positive control: Human colon cancer Predicted cell location: Cytoplasm
Reactivity:	Human
Host:	Rabbit
Isotype:	IgG
Clonality:	Polyclonal
Immunogen:	Fusion protein corresponding to a region derived from 27-243 amino acids of human linker for activation of T cells family, member 2
Formulation:	PBS pH7.3, 0.05% NaN ₃ , 50% glycerol
Concentration:	lot specific
Purification:	Antigen affinity purification
Conjugation:	Unconjugated
Storage:	Store at -20°C as received.
Stability:	Stable for 12 months from date of receipt.
Gene Name:	linker for activation of T-cells family member 2
Database Link:	NP_054865 Entrez Gene 7462 Human Q9GZY6



[View online »](#)

Background:

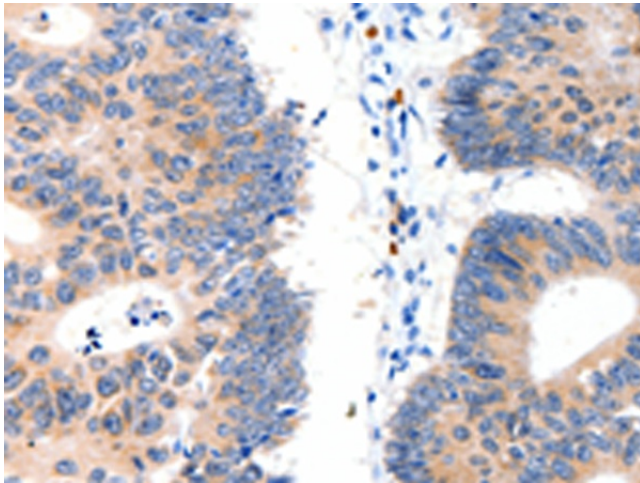
This gene is one of the contiguous genes at 7q11.23 commonly deleted in Williams syndrome; a multisystem developmental disorder. This gene consists of at least 14 exons; and its alternative splicing generates 3 transcript variants; all encoding the same protein. Involved in FCER1 (high affinity immunoglobulin epsilon receptor)-mediated signaling in mast cells. May also be involved in BCR (B-cell antigen receptor)-mediated signaling in B-cells and FCGR1 (high affinity immunoglobulin gamma Fc receptor I)-mediated signaling in myeloid cells. Couples activation of these receptors and their associated kinases with distal intracellular events through the recruitment of GRB2.

Synonyms:

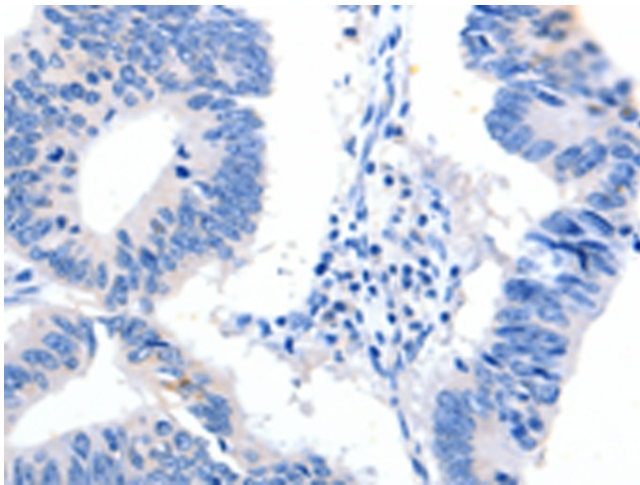
HSPC046; LAB; NTAL; WBSCR5; WBSCR15; WSCR5

Protein Families:

Transmembrane

Product images:

Immunohistochemistry of paraffin-embedded Human colon cancer tissue using TA322392 (LAT2 Antibody) at dilution 1/15 (Original magnification: $\times 200$)



Immunohistochemistry of paraffin-embedded Human colon cancer tissue using TA322392 (LAT2 Antibody) at dilution 1/15, treated with fusion protein. (Original magnification: $\times 200$)