

## Product datasheet for **TA322388**

### ADAMTS2 Rabbit Polyclonal Antibody

#### Product data:

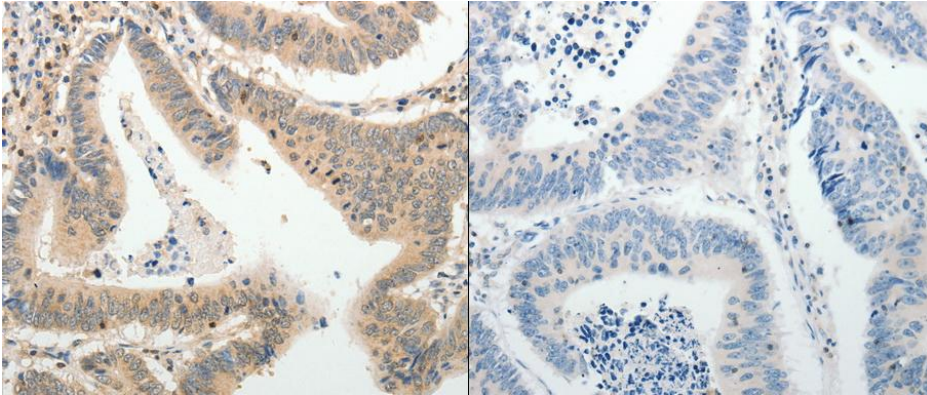
Product Type:	Primary Antibodies
Applications:	IHC
Recommended Dilution:	ELISA: 1:2000-5000, IHC: 1:25-100
Reactivity:	Human, Mouse, Rat
Host:	Rabbit
Isotype:	IgG
Clonality:	Polyclonal
Immunogen:	Synthetic peptide corresponding to a region derived from 1198-1211 amino acids of human ADAM metalloproteinase with thrombospondin type 1 motif, 2
Formulation:	PBS pH7.3, 0.05% NaN <sub>3</sub> , 50% glycerol
Concentration:	lot specific
Purification:	Antigen affinity purification
Conjugation:	Unconjugated
Storage:	Store at -20°C as received.
Stability:	Stable for 12 months from date of receipt.
Gene Name:	ADAM metalloproteinase with thrombospondin type 1 motif 2
Database Link:	<a href="#">NP_055059</a> <a href="#">Entrez Gene 216725 Mouse</a> <a href="#">Entrez Gene 287899 Rat</a> <a href="#">Entrez Gene 9509 Human</a> <a href="#">O95450</a>
Background:	This gene encodes a member of the ADAMTS (a disintegrin and metalloproteinase with thrombospondin motifs) protein family. Members of the family share several distinct protein modules; including a propeptide region; a metalloproteinase domain; a disintegrin-like domain; and a thrombospondin type 1 (TS) motif. Individual members of this family differ in the number of C-terminal TS motifs; and some have unique C-terminal domains. The enzyme encoded by this gene excises the N-propeptide of type I; type II and type V procollagens. Mutations in this gene cause Ehlers-Danlos syndrome type VIIC; a recessively inherited connective-tissue disorder. Alternative splicing results in multiple transcript variants.
Synonyms:	ADAM-TS2; ADAMTS-2; ADAMTS-3; NPI; PC I-NP; PCI-NP; PCINP; PCPNI; PNPI



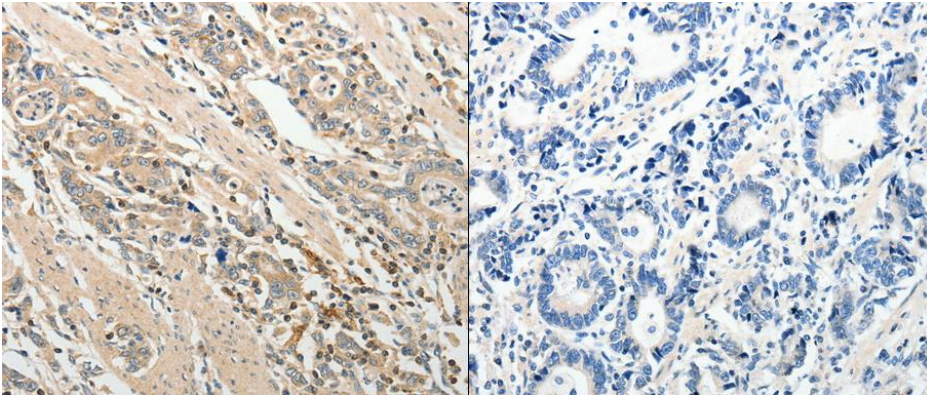
[View online »](#)

Protein Families: Druggable Genome

### Product images:



Predicted cell location: Secreted, Extracellular space, Extracellular matrix. Positive control: Human colon and gastric cancer tissue. Recommended dilution: 1/25-100 The image on the left is immunohistochemistry of paraffin-embedded human colon cancer tissue using ADAMTS2 antibody at dilution 1/25, on the right is treated with the synthetic peptide. (Original magnification:x200)



Predicted cell location: Secreted, Extracellular space, Extracellular matrix. Positive control: Human colon and gastric cancer tissue. Recommended dilution: 1/25-100 The image on the left is immunohistochemistry of paraffin-embedded human gastric cancer tissue using ADAMTS2 antibody at dilution 1/25, on the right is treated with the synthetic peptide. (Original magnification:x200)