

## Product datasheet for **TA322387**

### ADAM28 Rabbit Polyclonal Antibody

#### Product data:

Product Type:	Primary Antibodies
Applications:	IHC
Recommended Dilution:	IHC: 25-100 Positive control: Human breast cancer Predicted cell location: Cytoplasm, Secreted
Reactivity:	Human
Host:	Rabbit
Isotype:	IgG
Clonality:	Polyclonal
Immunogen:	Synthetic peptide corresponding to a region derived from 40-54 amino acids of human ADAM metallopeptidase domain 28
Formulation:	PBS pH7.3, 0.05% NaN <sub>3</sub> , 50% glycerol
Concentration:	lot specific
Purification:	Antigen affinity purification
Conjugation:	Unconjugated
Storage:	Store at -20°C as received.
Stability:	Stable for 12 months from date of receipt.
Gene Name:	ADAM metallopeptidase domain 28
Database Link:	<a href="#">NP_055080</a> <a href="#">Entrez Gene 10863 Human</a> <a href="#">Q9UKQ2</a>

**Background:** This gene encodes a member of the ADAM (a disintegrin and metalloprotease domain) family. Members of this family are membrane-anchored proteins structurally related to snake venom disintegrins; and have been implicated in a variety of biological processes involving cell-cell and cell-matrix interactions; including fertilization; muscle development; and neurogenesis. The protein encoded by this gene is a lymphocyte-expressed ADAM protein. Alternative splicing results in two transcript variants. The shorter version encodes a secreted isoform; while the longer version encodes a transmembrane isoform.

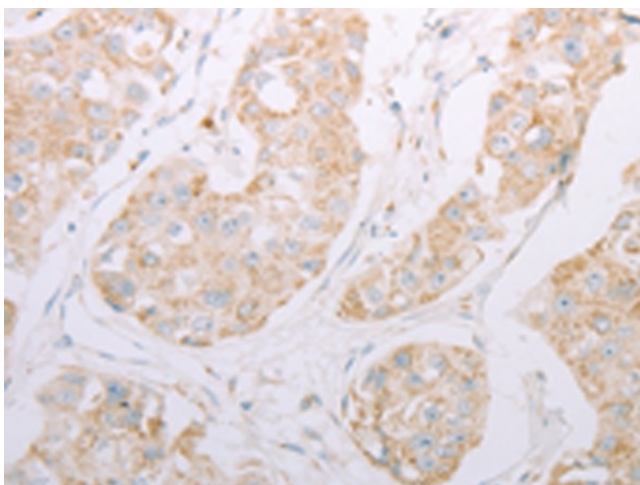


[View online »](#)

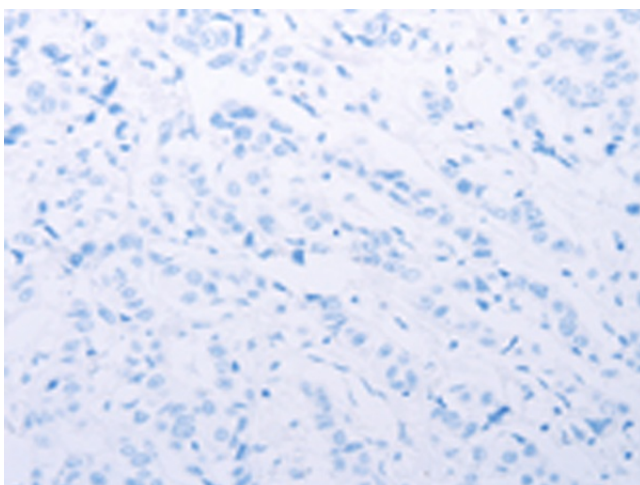
**Synonyms:** ADAM 28; eMDC II; eMDCII; MDC-L; MDCL

**Protein Families:** Druggable Genome, Protease, Secreted Protein, Transmembrane

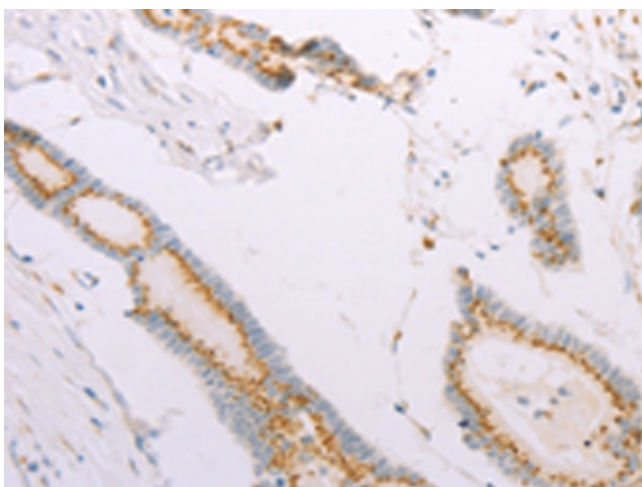
**Product images:**



Immunohistochemistry of paraffin-embedded Human breast cancer tissue using TA322387 (ADAM28 Antibody) at dilution 1/30 (Original magnification:  $\times 200$ )



Immunohistochemistry of paraffin-embedded Human breast cancer tissue using TA322387 (ADAM28 Antibody) at dilution 1/30, treated with synthetic peptide. (Original magnification:  $\times 200$ )



Immunohistochemistry of paraffin-embedded Human colon cancer tissue using TA322387 (ADAM28 Antibody) at dilution 1/30 (Original magnification:  $\times 200$ )



Immunohistochemistry of paraffin-embedded Human colon cancer tissue using TA322387 (ADAM28 Antibody) at dilution 1/30, treated with synthetic peptide. (Original magnification:  $\times 200$ )