

Product datasheet for **TA322386**

Calpain 6 (CAPN6) Rabbit Polyclonal Antibody

Product data:

Product Type:	Primary Antibodies
Applications:	IHC, WB
Recommended Dilution:	WB: 500-2000 WB positive control: TM4 and NIH/3T3 cell lysates IHC: 50-100 Positive control: Human liver cancer Predicted cell location: Cytoplasm
Reactivity:	Human, Mouse, Rat
Host:	Rabbit
Isotype:	IgG
Clonality:	Polyclonal
Immunogen:	Fusion protein corresponding to a region derived from 26-343 amino acids of human calpain 6
Formulation:	PBS pH7.3, 0.05% NaN ₃ , 50% glycerol
Concentration:	lot specific
Purification:	Antigen affinity purification
Conjugation:	Unconjugated
Storage:	Store at -20°C as received.
Stability:	Stable for 12 months from date of receipt.
Gene Name:	calpain 6
Database Link:	NP_055104 Entrez Gene 12338 Mouse Entrez Gene 83685 Rat Entrez Gene 827 Human Q9Y6Q1



[View online »](#)

Background:

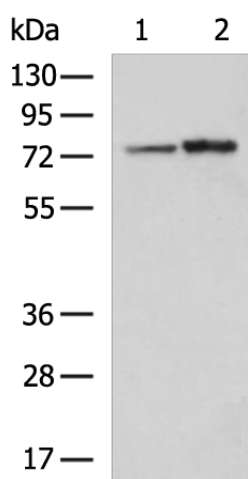
Calpains are ubiquitous; well-conserved family of calcium-dependent; cysteine proteases. The calpain proteins are heterodimers consisting of an invariant small subunit and variable large subunits. The large subunit possesses a cysteine protease domain; and both subunits possess calcium-binding domains. Calpains have been implicated in neurodegenerative processes; as their activation can be triggered by calcium influx and oxidative stress. The protein encoded by this gene is highly expressed in the placenta. Its C-terminal region lacks any homology to the calmodulin-like domain of other calpains. The protein lacks critical active site residues and thus is suggested to be proteolytically inactive. The protein may play a role in tumor formation by inhibiting apoptosis and promoting angiogenesis.

Synonyms:

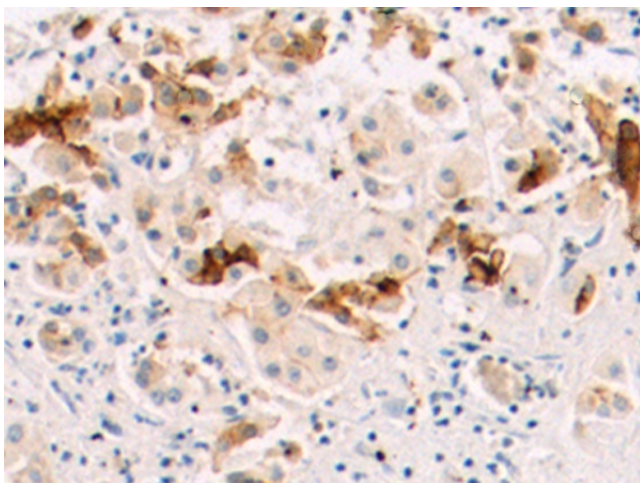
CalpM; CANPX; CAPNX; DJ914P14.1

Protein Families:

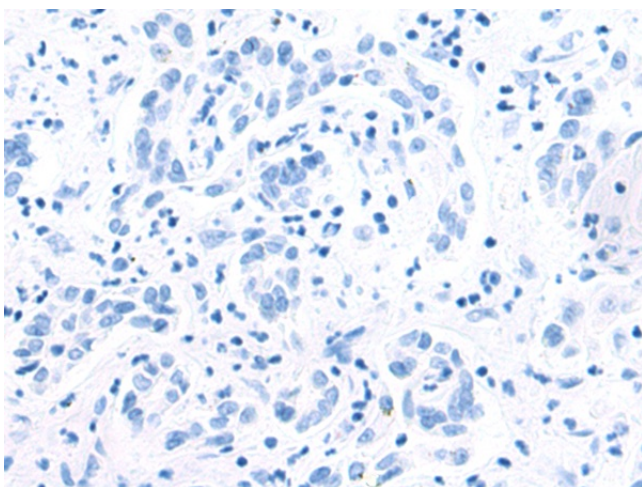
Druggable Genome, Protease

Product images:


Gel: 8%SDS-PAGE
 Lysate: 40 µg
 Lane 1-2: TM4 and NIH/3T3 cell lysates
 Primary antibody: TA322386 (CAPN6 Antibody) at dilution 1/500
 Secondary antibody: Goat anti rabbit IgG at 1/5000 dilution
 Exposure time: 15 seconds



Immunohistochemistry of paraffin-embedded Human liver cancer tissue using TA322386 (CAPN6 Antibody) at dilution 1/70 (Original magnification: ×200)



Immunohistochemistry of paraffin-embedded Human liver cancer tissue using TA322386 (CAPN6 Antibody) at dilution 1/70, treated with fusion protein. (Original magnification: ×200)