

Product datasheet for **TA322384S**

RAB26 Rabbit Polyclonal Antibody

Product data:

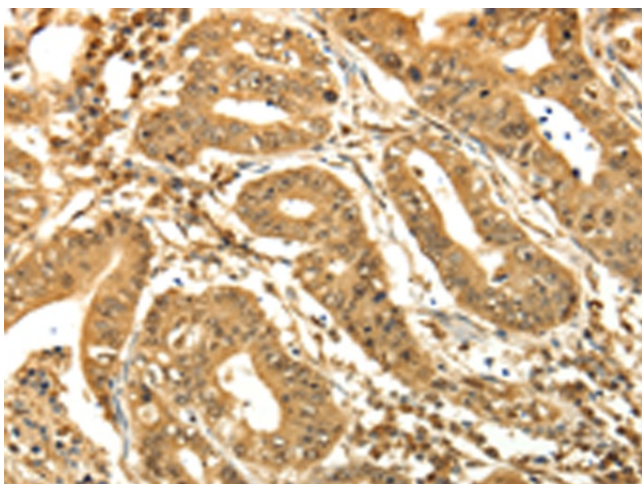
Product Type:	Primary Antibodies
Applications:	IHC, WB
Recommended Dilution:	WB: 200-1000 WB positive control: MCF7 and A375 cells IHC: 50-200 Positive control: Human gastric cancer Predicted cell location: Cytoplasm, Nucleus
Reactivity:	Human, Mouse, Rat
Host:	Rabbit
Isotype:	IgG
Clonality:	Polyclonal
Immunogen:	Synthetic peptide corresponding to a region derived from 177-191 amino acids of Human Ras-related protein Rab-26
Formulation:	PBS pH7.3, 0.05% NaN ₃ , 50% glycerol
Purification:	Antigen affinity purification
Conjugation:	Unconjugated
Storage:	Store at -20°C as received.
Stability:	Stable for 12 months from date of receipt.
Gene Name:	RAB26, member RAS oncogene family
Database Link:	NP_055168 Entrez Gene 171111 Rat Entrez Gene 328778 Mouse Entrez Gene 25837 Human Q9ULW5
Background:	This gene encodes a small GTP-binding protein that belongs to the largest family within the Ras superfamily. RAB26 are important regulators of vesicular fusion and trafficking. The RAB family of small G proteins regulates intercellular vesicle trafficking; including exocytosis; endocytosis; and recycling.
Synonyms:	V46133
Protein Families:	Druggable Genome



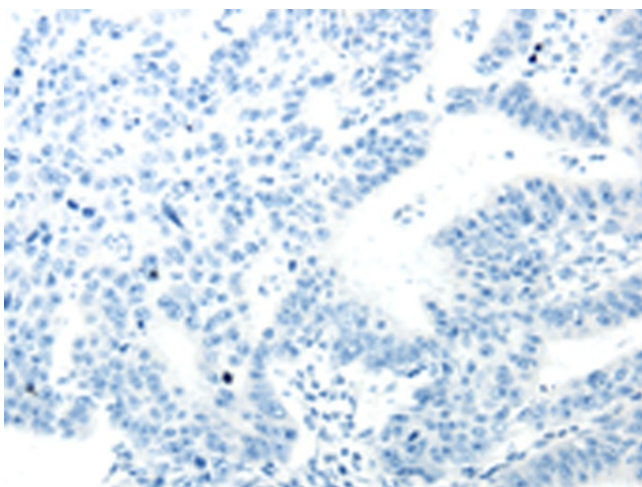
[View online »](#)

Product images:

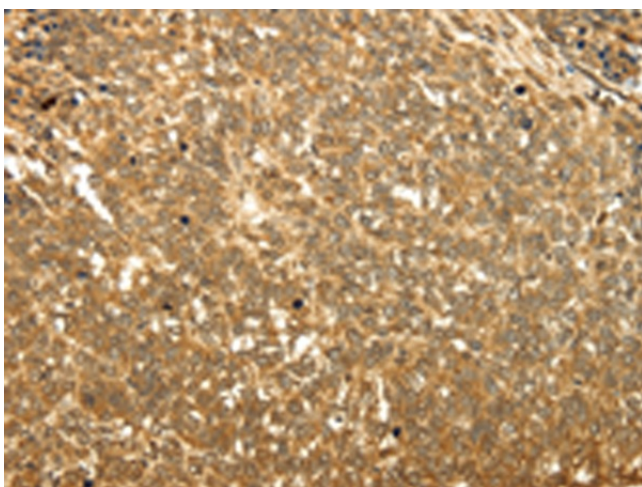
Gel: 12%SDS-PAGE
Lysate: 40 μ g
Lane 1-2: MCF7 cells
A375 cells
Primary antibody: [TA322384] (RAB26 Antibody)
at dilution 1/200
Secondary antibody: Goat anti rabbit IgG at
1/8000 dilution
Exposure time: 5 seconds



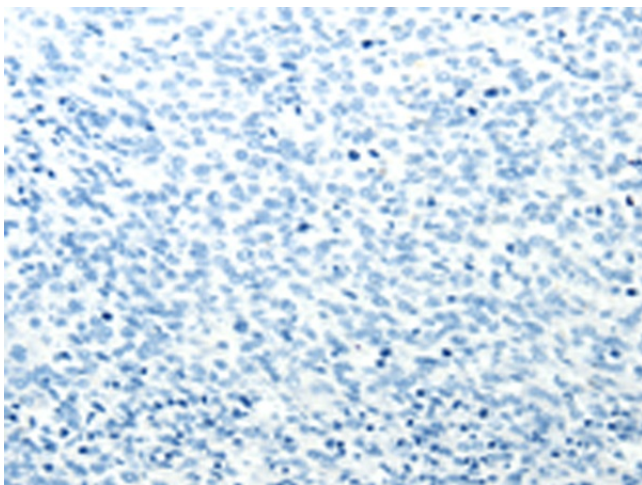
Immunohistochemistry of paraffin-embedded
Human gastric cancer tissue using [TA322384]
(RAB26 Antibody) at dilution 1/60 (Original
magnification: \times 200)



Immunohistochemistry of paraffin-embedded Human gastric cancer tissue using [TA322384] (RAB26 Antibody) at dilution 1/60, treated with synthetic peptide. (Original magnification: $\times 200$)



Immunohistochemistry of paraffin-embedded Human ovarian cancer tissue using [TA322384] (RAB26 Antibody) at dilution 1/60 (Original magnification: $\times 200$)



Immunohistochemistry of paraffin-embedded Human ovarian cancer tissue using [TA322384] (RAB26 Antibody) at dilution 1/60, treated with synthetic peptide. (Original magnification: $\times 200$)