

## Product datasheet for **TA322384**

### **RAB26 Rabbit Polyclonal Antibody**

#### **Product data:**

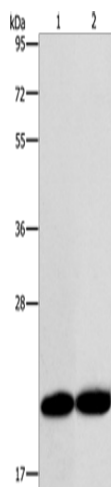
<b>Product Type:</b>	Primary Antibodies
<b>Applications:</b>	IHC, WB
<b>Recommended Dilution:</b>	WB: 200-1000 WB positive control: MCF7 and A375 cells IHC: 50-200 Positive control: Human gastric cancer Predicted cell location: Cytoplasm, Nucleus
<b>Reactivity:</b>	Human, Mouse, Rat
<b>Host:</b>	Rabbit
<b>Isotype:</b>	IgG
<b>Clonality:</b>	Polyclonal
<b>Immunogen:</b>	Synthetic peptide corresponding to a region derived from 177-191 amino acids of Human Ras-related protein Rab-26
<b>Formulation:</b>	PBS pH7.3, 0.05% NaN <sub>3</sub> , 50% glycerol
<b>Concentration:</b>	lot specific
<b>Purification:</b>	Antigen affinity purification
<b>Conjugation:</b>	Unconjugated
<b>Storage:</b>	Store at -20°C as received.
<b>Stability:</b>	Stable for 12 months from date of receipt.
<b>Gene Name:</b>	RAB26, member RAS oncogene family
<b>Database Link:</b>	<a href="#">NP_055168</a> <a href="#">Entrez Gene 171111 Rat</a> <a href="#">Entrez Gene 328778 Mouse</a> <a href="#">Entrez Gene 25837 Human</a> <a href="#">Q9ULW5</a>
<b>Background:</b>	This gene encodes a small GTP-binding protein that belongs to the largest family within the Ras superfamily. RAB26 are important regulators of vesicular fusion and trafficking. The RAB family of small G proteins regulates intercellular vesicle trafficking; including exocytosis; endocytosis; and recycling.
<b>Synonyms:</b>	V46133



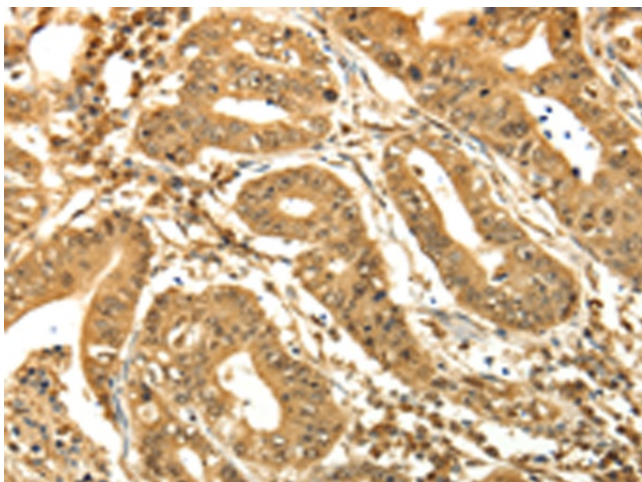
[View online »](#)

Protein Families: Druggable Genome

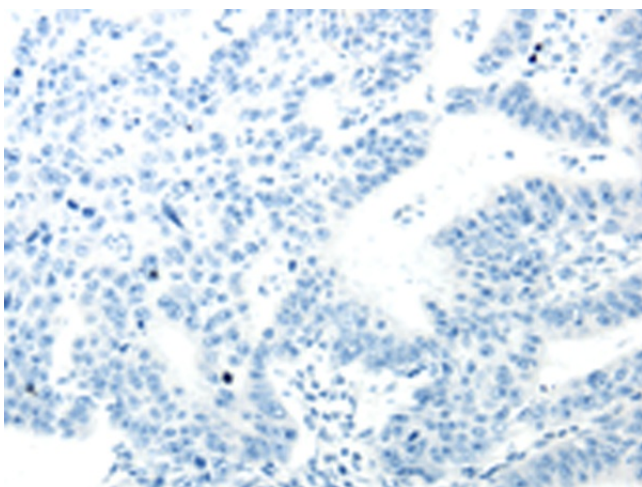
### Product images:



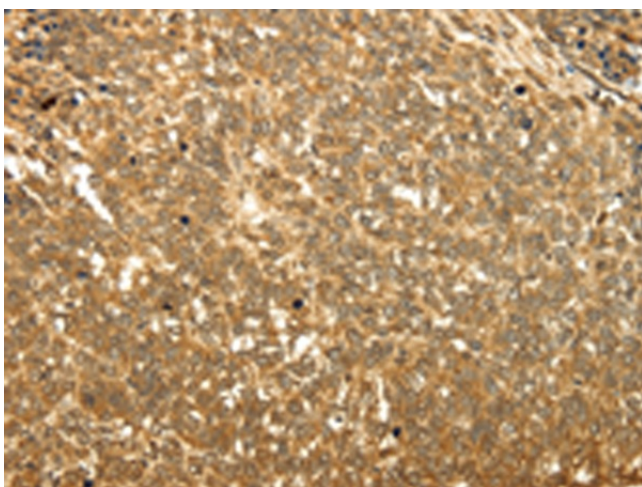
Gel: 12%SDS-PAGE  
Lysate: 40  $\mu$ g  
Lane 1-2: MCF7 cells  
A375 cells  
Primary antibody: TA322384 (RAB26 Antibody) at dilution 1/200  
Secondary antibody: Goat anti rabbit IgG at 1/8000 dilution  
Exposure time: 5 seconds



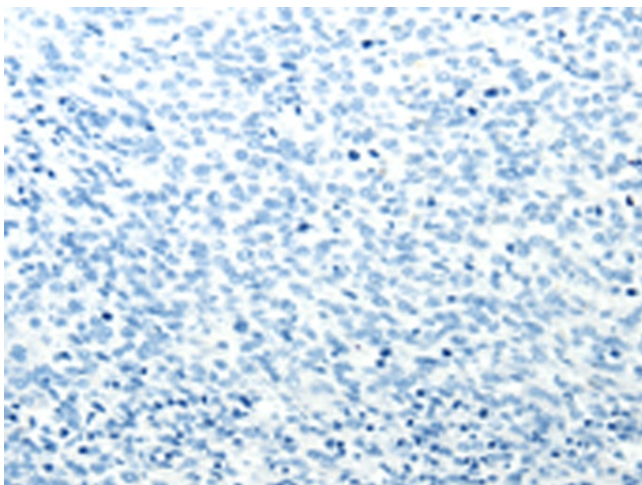
Immunohistochemistry of paraffin-embedded Human gastric cancer tissue using TA322384 (RAB26 Antibody) at dilution 1/60 (Original magnification:  $\times$ 200)



Immunohistochemistry of paraffin-embedded Human gastric cancer tissue using TA322384 (RAB26 Antibody) at dilution 1/60, treated with synthetic peptide. (Original magnification: ×200)



Immunohistochemistry of paraffin-embedded Human ovarian cancer tissue using TA322384 (RAB26 Antibody) at dilution 1/60 (Original magnification: ×200)



Immunohistochemistry of paraffin-embedded Human ovarian cancer tissue using TA322384 (RAB26 Antibody) at dilution 1/60, treated with synthetic peptide. (Original magnification: ×200)