

## Product datasheet for **TA322383**

### AKAP8L Rabbit Polyclonal Antibody

#### Product data:

Product Type:	Primary Antibodies
Applications:	IHC, WB
Recommended Dilution:	WB: 500-2000 WB positive control: Hela cells and mouse brain tissue IHC: 25-100 Positive control: Human liver cancer Predicted cell location: Nucleus, Cytoplasm
Reactivity:	Human, Mouse
Host:	Rabbit
Isotype:	IgG
Clonality:	Polyclonal
Immunogen:	Synthetic peptide peptide corresponding to a region derived from 627-640 amino acids of human A kinase (PRKA) anchor protein 8-like
Formulation:	PBS pH7.3, 0.05% NaN <sub>3</sub> , 50% glycerol
Concentration:	lot specific
Purification:	Antigen affinity purification
Conjugation:	Unconjugated
Storage:	Store at -20°C as received.
Stability:	Stable for 12 months from date of receipt.
Predicted Protein Size:	72 kDa
Gene Name:	A-kinase anchoring protein 8 like
Database Link:	<a href="#">NP_055186</a> <a href="#">Entrez Gene 54194 Mouse</a> <a href="#">Entrez Gene 26993 Human</a> <a href="#">Q9ULX6</a>



[View online »](#)

**Background:**

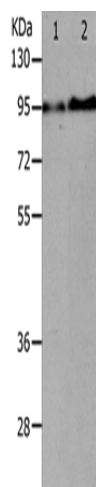
A-kinase anchor protein 8-like is an enzyme that in humans is encoded by the AKAP8L gene. AKAP8L has been shown to interact with Thymopoietin[4][5] and DHX9. Could play a role in constitutive transport element (CTE)-mediated gene expression. Does not seem to be implicated in the binding of regulatory subunit II of PKA. May be involved in nuclear envelope breakdown and chromatin condensation. May regulate the initiation phase of DNA replication when associated with TMPO-beta.

**Synonyms:**

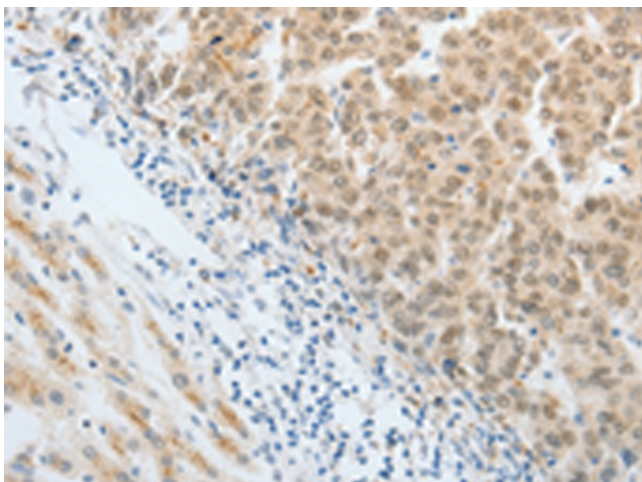
HA95; HAP95; NAKAP; NAKAP95

**Protein Families:**

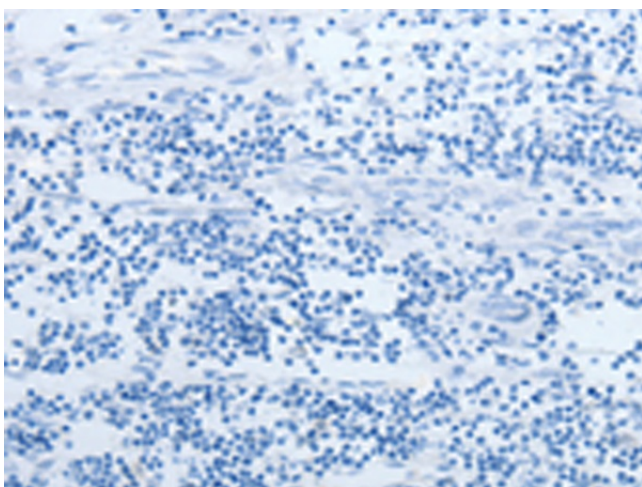
Druggable Genome

**Product images:**

Gel: 10%SDS-PAGE  
Lysate: 40  $\mu$ g  
Lane 1-2: HeLa cells  
mouse brain tissue  
Primary antibody: TA322383 (AKAP8L Antibody)  
at dilution 1/250  
Secondary antibody: Goat anti rabbit IgG at  
1/8000 dilution  
Exposure time: 2 minutes



Immunohistochemistry of paraffin-embedded  
Human liver cancer tissue using TA322383  
(AKAP8L Antibody) at dilution 1/20 (Original  
magnification:  $\times$ 200)



Immunohistochemistry of paraffin-embedded Human liver cancer tissue using TA322383 (AKAP8L Antibody) at dilution 1/20, treated with synthetic peptide. (Original magnification: ×200)