

## Product datasheet for **TA322381S**

### AKAP8L Rabbit Polyclonal Antibody

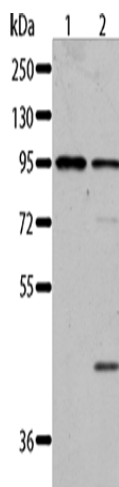
#### Product data:

Product Type:	Primary Antibodies
Applications:	IHC, WB
Recommended Dilution:	WB: 200-1000 WB positive control: Jurkat and 293T cells IHC: 25-100 Positive control: Human breast cancer Predicted cell location: Nucleus
Reactivity:	Human, Mouse
Host:	Rabbit
Isotype:	IgG
Clonality:	Polyclonal
Immunogen:	Fusion protein corresponding to C terminal 300 amino acids of human
Formulation:	PBS pH7.3, 0.05% NaN <sub>3</sub> , 50% glycerol
Purification:	Antigen affinity purification
Conjugation:	Unconjugated
Storage:	Store at -20°C as received.
Stability:	Stable for 12 months from date of receipt.
Predicted Protein Size:	72 kDa
Gene Name:	A-kinase anchoring protein 8 like
Database Link:	<a href="#">NP_055186</a> <a href="#">Entrez Gene 54194 Mouse</a> <a href="#">Entrez Gene 26993 Human</a> <a href="#">Q9ULX6</a>
Background:	A-kinase anchor protein 8-like?is an?enzyme?that in humans is encoded by the?AKAP8L?gene. Could play a role in constitutive transport element (CTE)-mediated gene expression. Does not seem to be implicated in the binding of regulatory subunit II of PKA. May be involved in nuclear envelope breakdown and chromatin condensation. May regulate the initiation phase of DNA replication when associated with TMPO-beta.
Synonyms:	HA95; HAP95; NAKAP; NAKAP95

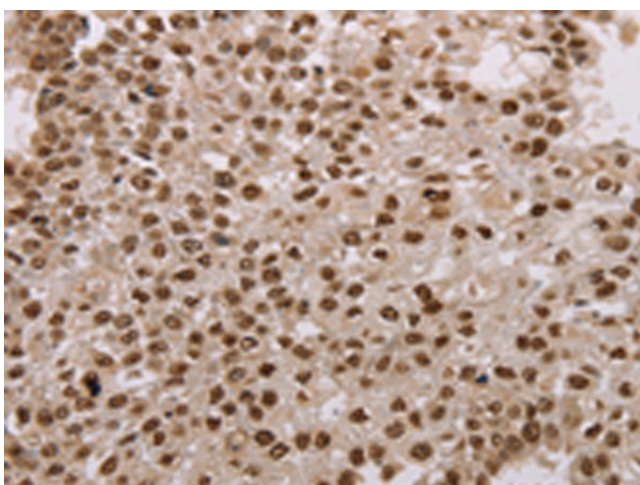

[View online »](#)

Protein Families: Druggable Genome

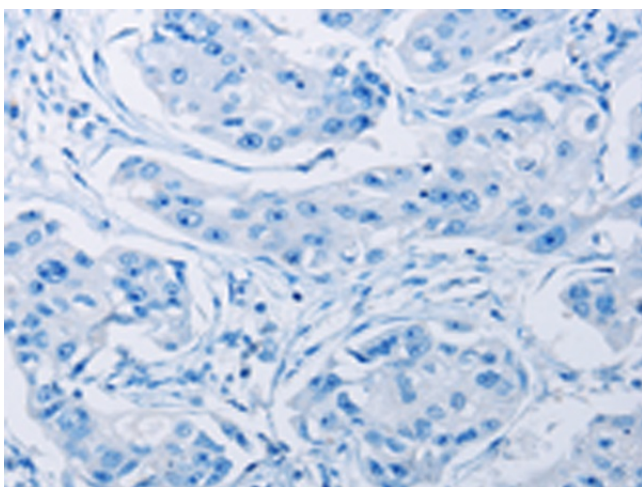
## Product images:



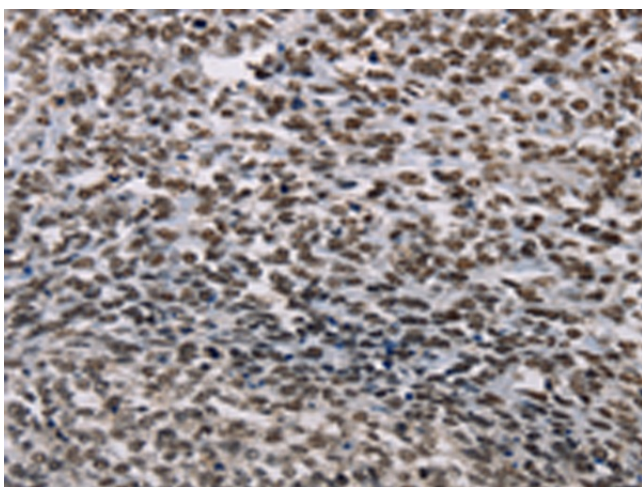
Gel: 8%SDS-PAGE  
Lysate: 40 µg  
Lane 1-2: Jurkat cells  
293T cells  
Primary antibody: [TA322381] (AKAP8L Antibody)  
at dilution 1/84  
Secondary antibody: Goat anti rabbit IgG at  
1/8000 dilution  
Exposure time: 20 seconds



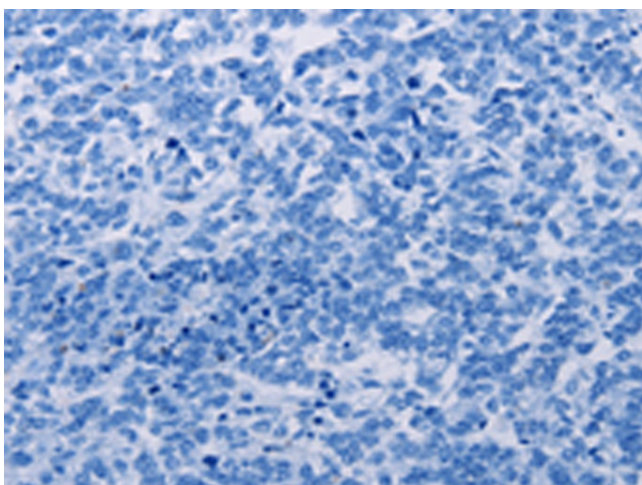
Immunohistochemistry of paraffin-embedded  
Human breast cancer tissue using [TA322381]  
(AKAP8L Antibody) at dilution 1/15 (Original  
magnification: ×200)



Immunohistochemistry of paraffin-embedded Human breast cancer tissue using [TA322381] (AKAP8L Antibody) at dilution 1/15, treated with fusion protein. (Original magnification: ×200)



Immunohistochemistry of paraffin-embedded Human ovarian cancer tissue using [TA322381] (AKAP8L Antibody) at dilution 1/15 (Original magnification: ×200)



Immunohistochemistry of paraffin-embedded Human ovarian cancer tissue using [TA322381] (AKAP8L Antibody) at dilution 1/15, treated with fusion protein. (Original magnification: ×200)