

Product datasheet for **TA322380S**

AKAP8L Rabbit Polyclonal Antibody

Product data:

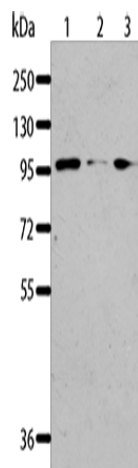
Product Type:	Primary Antibodies
Applications:	IHC, WB
Recommended Dilution:	WB: 200-1000 WB positive control: Jurkat, 293T and K562 cells IHC: 25-100 Positive control: Human brain Predicted cell location: Nucleus
Reactivity:	Human, Mouse
Host:	Rabbit
Isotype:	IgG
Clonality:	Polyclonal
Immunogen:	Fusion protein corresponding to C terminal 300 amino acids of human
Formulation:	PBS pH7.3, 0.05% NaN ₃ , 50% glycerol
Purification:	Antigen affinity purification
Conjugation:	Unconjugated
Storage:	Store at -20°C as received.
Stability:	Stable for 12 months from date of receipt.
Predicted Protein Size:	72 kDa
Gene Name:	A-kinase anchoring protein 8 like
Database Link:	NP_055186 Entrez Gene 54194 Mouse Entrez Gene 26993 Human Q9ULX6
Background:	A-kinase anchor protein 8-like is an enzyme that in humans is encoded by the AKAP8L gene. Could play a role in constitutive transport element (CTE)-mediated gene expression. Does not seem to be implicated in the binding of regulatory subunit II of PKA. May be involved in nuclear envelope breakdown and chromatin condensation. May regulate the initiation phase of DNA replication when associated with TMPO-beta.
Synonyms:	HA95; HAP95; NAKAP; NAKAP95



[View online »](#)

Protein Families: Druggable Genome

Product images:



Gel: 8%SDS-PAGE

Lysate: 40 μ g

Lane 1-3: Jurkat cells

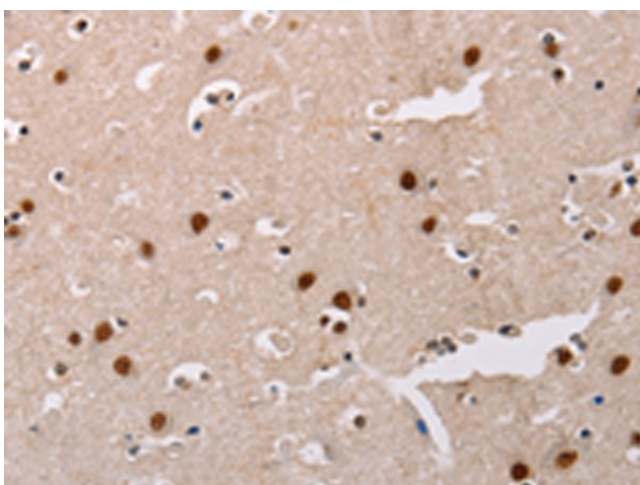
293T cells

K562 cells

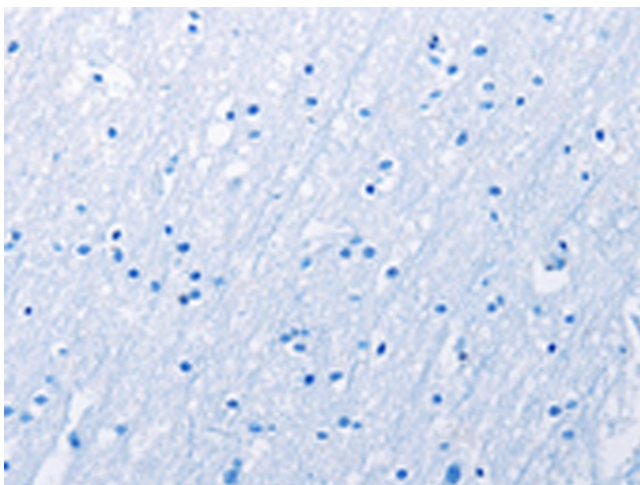
Primary antibody: [TA322380] (AKAP8L Antibody)
at dilution 1/117

Secondary antibody: Goat anti rabbit IgG at
1/8000 dilution

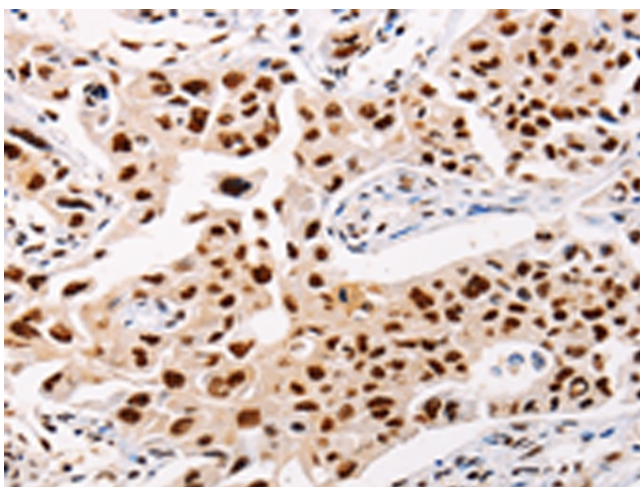
Exposure time: 30 seconds



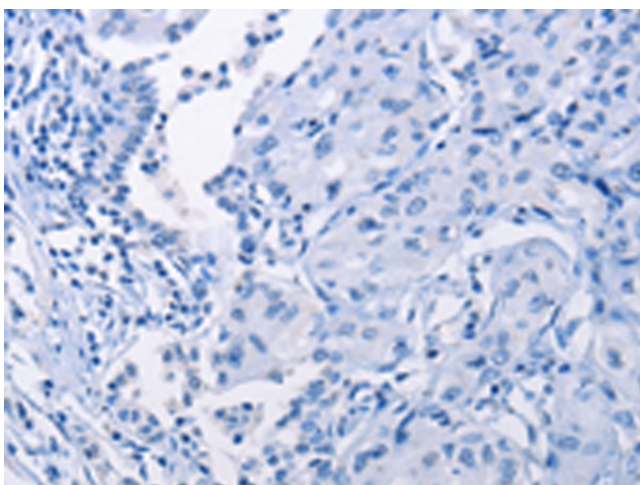
Immunohistochemistry of paraffin-embedded
Human brain tissue using [TA322380] (AKAP8L
Antibody) at dilution 1/20 (Original magnification:
 \times 200)



Immunohistochemistry of paraffin-embedded Human brain tissue using [TA322380] (AKAP8L Antibody) at dilution 1/20, treated with fusion protein. (Original magnification: x200)



Immunohistochemistry of paraffin-embedded Human lung cancer tissue using [TA322380] (AKAP8L Antibody) at dilution 1/20 (Original magnification: x200)



Immunohistochemistry of paraffin-embedded Human lung cancer tissue using [TA322380] (AKAP8L Antibody) at dilution 1/20, treated with fusion protein. (Original magnification: x200)