

## Product datasheet for **TA322377**

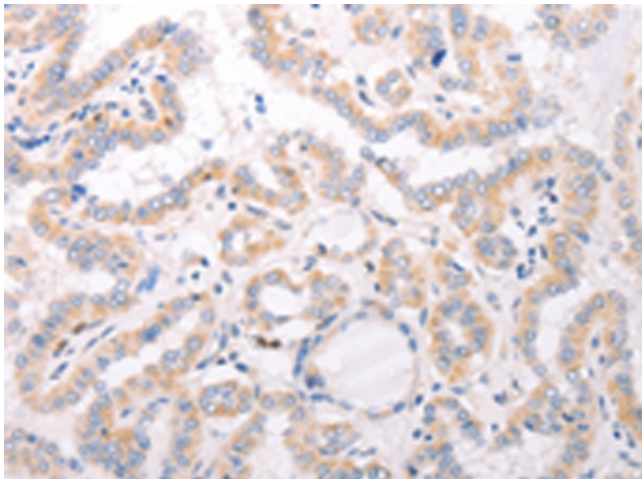
### **CIDE B (CIDEB) Rabbit Polyclonal Antibody**

#### **Product data:**

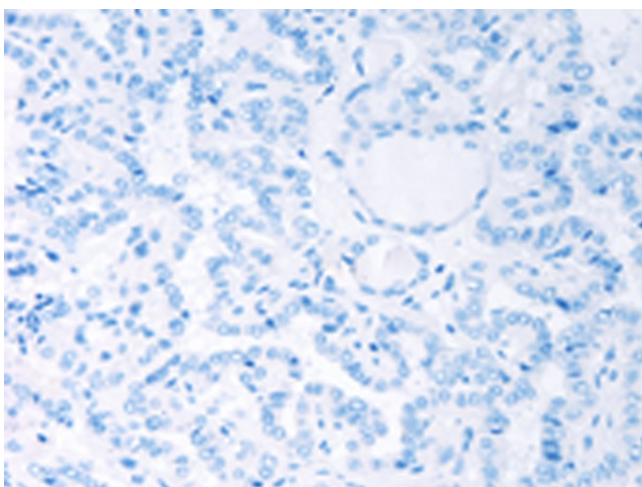
Product Type:	Primary Antibodies
Applications:	IHC
Recommended Dilution:	IHC: 50-200 Positive control: Human thyroid cancer Predicted cell location: Cytoplasm
Reactivity:	Human, Mouse
Host:	Rabbit
Isotype:	IgG
Clonality:	Polyclonal
Immunogen:	Full length fusion protein
Formulation:	PBS pH7.3, 0.05% NaN <sub>3</sub> , 50% glycerol
Concentration:	lot specific
Purification:	Antigen affinity purification
Conjugation:	Unconjugated
Storage:	Store at -20°C as received.
Stability:	Stable for 12 months from date of receipt.
Gene Name:	cell death-inducing DFFA-like effector b
Database Link:	<a href="#">NP_055245</a> <a href="#">Entrez Gene 12684 Mouse</a> <a href="#">Entrez Gene 27141 Human</a> <a href="#">Q9UHD4</a>
Background:	This protein can activate apoptosis. It is inhibited by DFFB and interacts with DFFA and DFFB. It has high levels of expression in liver and small intestine; and has lower levels of expression in colon; kidney and spleen. CideB specifically interacts with VLDL structural protein; apolipoprotein B100 (apoB100); but not with albumin; a PTV cargo protein. It can interact with COPII components; Sar1 and Sec24
Synonyms:	cell death-inducing DFFA-like effector b
Protein Families:	Druggable Genome



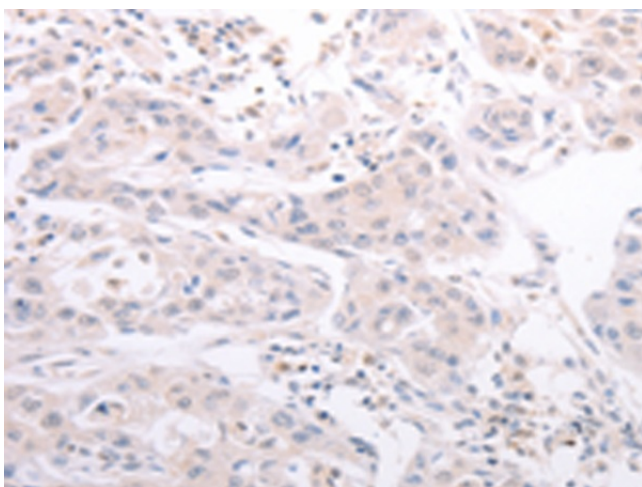
[View online »](#)

**Product images:**

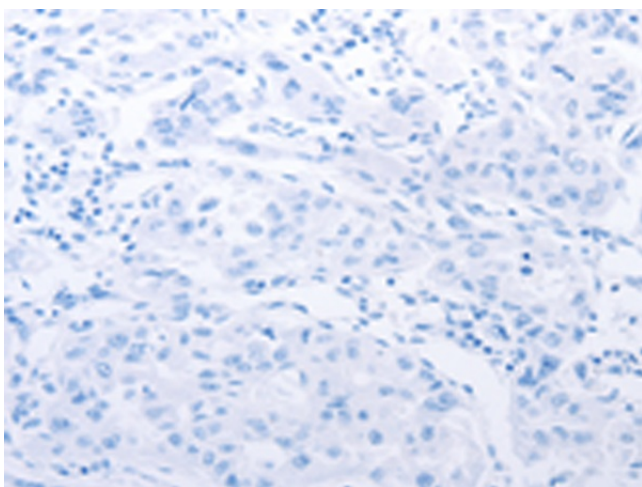
Immunohistochemistry of paraffin-embedded Human thyroid cancer tissue using TA322377 (CIDEB Antibody) at dilution 1/50 (Original magnification:  $\times 200$ )



Immunohistochemistry of paraffin-embedded Human thyroid cancer tissue using TA322377 (CIDEB Antibody) at dilution 1/50, treated with fusion protein. (Original magnification:  $\times 200$ )



Immunohistochemistry of paraffin-embedded Human lung cancer tissue using TA322377 (CIDEB Antibody) at dilution 1/50 (Original magnification: ×200)



Immunohistochemistry of paraffin-embedded Human lung cancer tissue using TA322377 (CIDEB Antibody) at dilution 1/50, treated with fusion protein. (Original magnification: ×200)