

## Product datasheet for **TA322373S**

### TRPM5 Rabbit Polyclonal Antibody

#### Product data:

Product Type:	Primary Antibodies
Applications:	IHC, WB
Recommended Dilution:	WB: 500-2000 WB positive control: Mouse heart tissue IHC: 50-200 Positive control: Human thyroid cancer Predicted cell location: Cytoplasm
Reactivity:	Human, Mouse
Host:	Rabbit
Isotype:	IgG
Clonality:	Polyclonal
Immunogen:	Synthetic peptide corresponding to a region derived from 1029-1043 amino acids of human transient receptor potential cation channel, subfamily M, member 5
Formulation:	PBS pH7.3, 0.05% NaN <sub>3</sub> , 50% glycerol
Purification:	Antigen affinity purification
Conjugation:	Unconjugated
Storage:	Store at -20°C as received.
Stability:	Stable for 12 months from date of receipt.
Gene Name:	transient receptor potential cation channel subfamily M member 5
Database Link:	<a href="#">NP_055370</a> <a href="#">Entrez Gene 56843 Mouse</a> <a href="#">Entrez Gene 29850 Human</a> <a href="#">Q9NZQ8</a>



[View online »](#)

**Background:**

This gene encodes a member of the transient receptor potential (TRP) protein family; which is a diverse group of proteins with structural features typical of ion channels. This protein plays an important role in taste transduction; and has characteristics of a calcium-activated; non-selective cation channel that carries Na<sup>+</sup>; K<sup>+</sup>; and Cs<sup>+</sup> ions equally well; but not Ca<sup>2+</sup> ions. It is activated by lower concentrations of intracellular Ca<sup>2+</sup>; and inhibited by higher concentrations. It is also a highly temperature-sensitive; heat activated channel showing a steep increase of inward currents at temperatures between 15 and 35 degrees Celsius. This gene is located within the Beckwith-Wiedemann syndrome critical region-1 on chromosome 11p15.5; and has been shown to be imprinted; with exclusive expression from the paternal allele.

**Synonyms:**

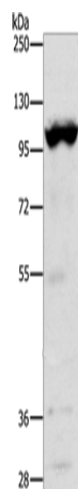
LTRPC5; MTR1

**Protein Families:**

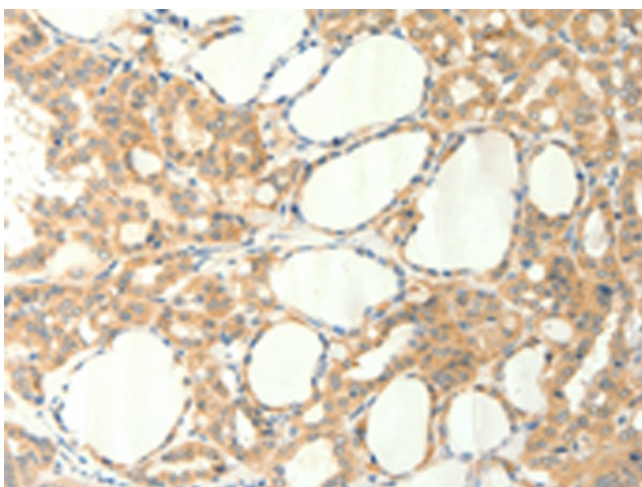
Druggable Genome, Ion Channels: Transient receptor potential, Transmembrane

**Protein Pathways:**

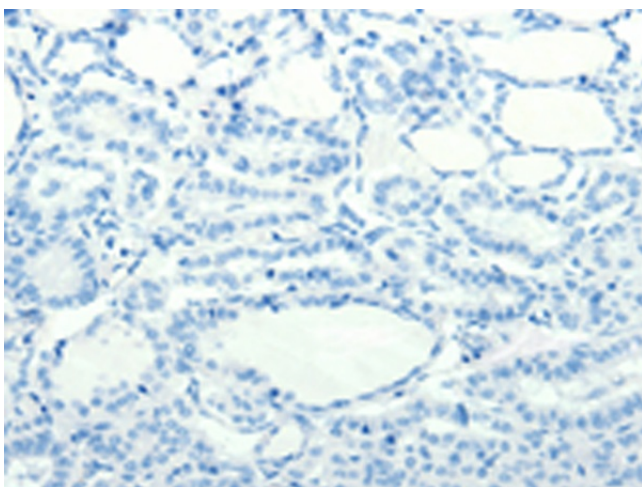
Taste transduction

**Product images:**

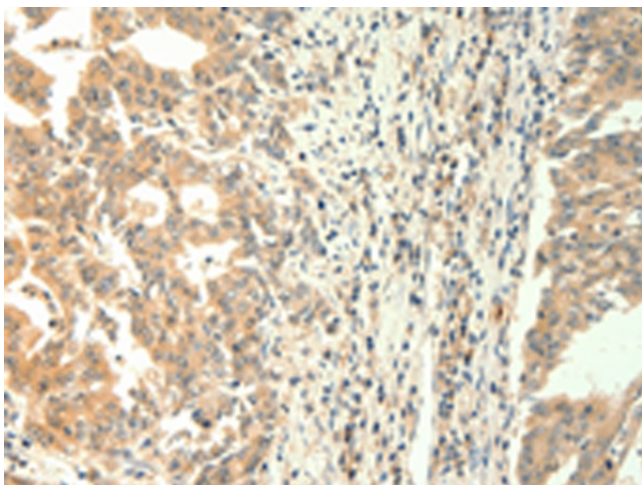
Gel: 10%SDS-PAGE  
Lysate: 40 µg  
Lane: Mouse heart tissue  
Primary antibody: [TA322373] (TRPM5 Antibody)  
at dilution 1/1200  
Secondary antibody: Goat anti rabbit IgG at  
1/8000 dilution  
Exposure time: 20 seconds



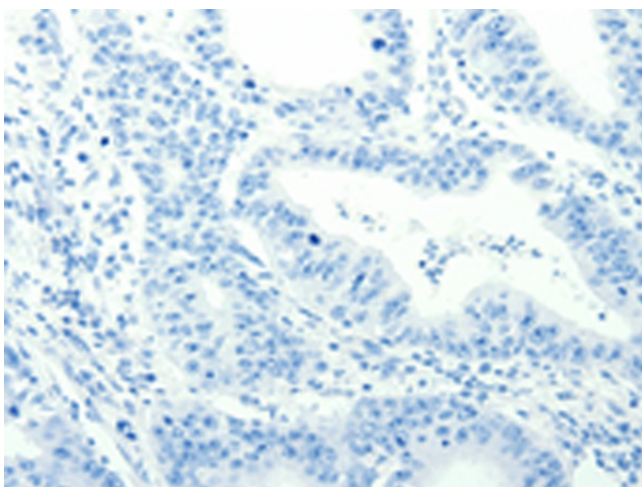
Immunohistochemistry of paraffin-embedded Human thyroid cancer tissue using [TA322373] (TRPM5 Antibody) at dilution 1/60 (Original magnification:  $\times 200$ )



Immunohistochemistry of paraffin-embedded Human thyroid cancer tissue using [TA322373] (TRPM5 Antibody) at dilution 1/60, treated with synthetic peptide. (Original magnification:  $\times 200$ )



Immunohistochemistry of paraffin-embedded Human gastric cancer tissue using [TA322373] (TRPM5 Antibody) at dilution 1/60 (Original magnification:  $\times 200$ )



Immunohistochemistry of paraffin-embedded Human gastric cancer tissue using [TA322373] (TRPM5 Antibody) at dilution 1/60, treated with synthetic peptide. (Original magnification: ×200)