

Product datasheet for **TA322371**

SOCS7 Rabbit Polyclonal Antibody

Product data:

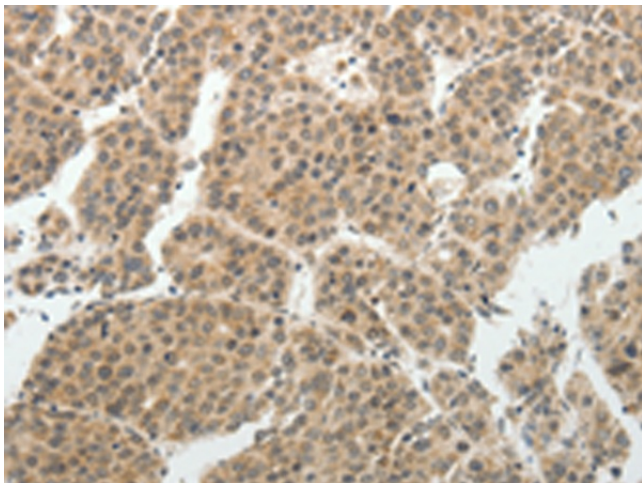
Product Type:	Primary Antibodies
Applications:	IHC
Recommended Dilution:	IHC: 50-200 Positive control: Human liver cancer Predicted cell location: Cytoplasm, Nucleus
Reactivity:	Human, Mouse
Host:	Rabbit
Isotype:	IgG
Clonality:	Polyclonal
Immunogen:	Synthetic peptide corresponding to a region derived from 6-20 amino acids of human suppressor of cytokine signaling 7
Formulation:	PBS pH7.3, 0.05% NaN ₃ , 50% glycerol
Concentration:	lot specific
Purification:	Antigen affinity purification
Conjugation:	Unconjugated
Storage:	Store at -20°C as received.
Stability:	Stable for 12 months from date of receipt.
Gene Name:	suppressor of cytokine signaling 7
Database Link:	NP_055413 Entrez Gene 192157 Mouse Entrez Gene 30837 Human O14512
Background:	The protein as regulator signaling cascades probably through protein ubiquitination and/or sequestration. It plays an important role in insulin signaling and glucose homeostasis through IRS1 ubiquitination and subsequent proteasomal degradation. Inhibits also prolactin; growth hormone and leptin signaling by preventing STAT3 and STAT5 activation; sequestering them in the cytoplasm and reducing their binding to DNA.
Synonyms:	NAP4; NCKAP4
Protein Families:	Druggable Genome



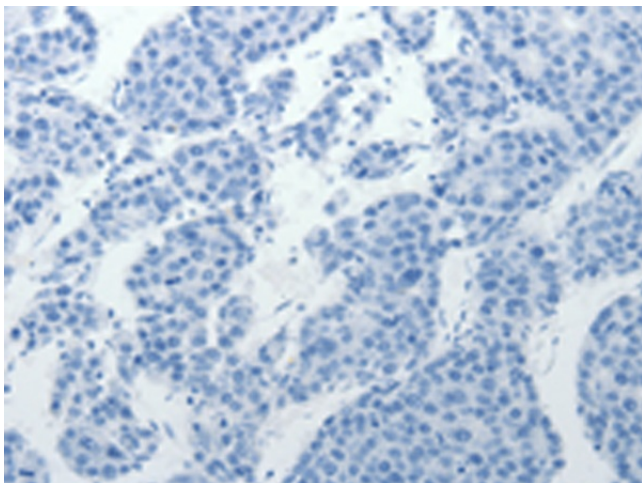
[View online »](#)

Protein Pathways: Jak-STAT signaling pathway

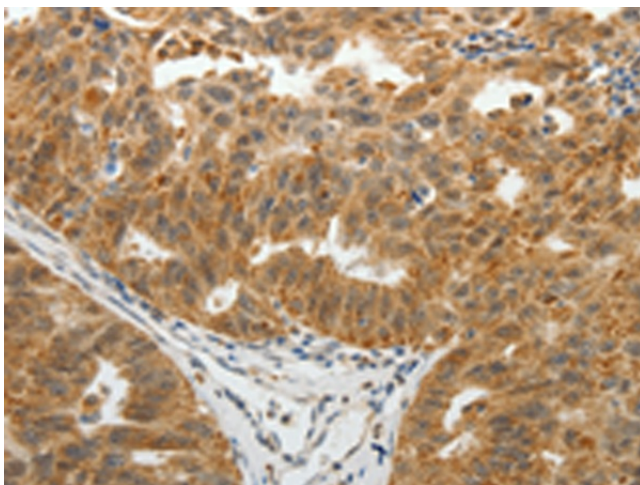
Product images:



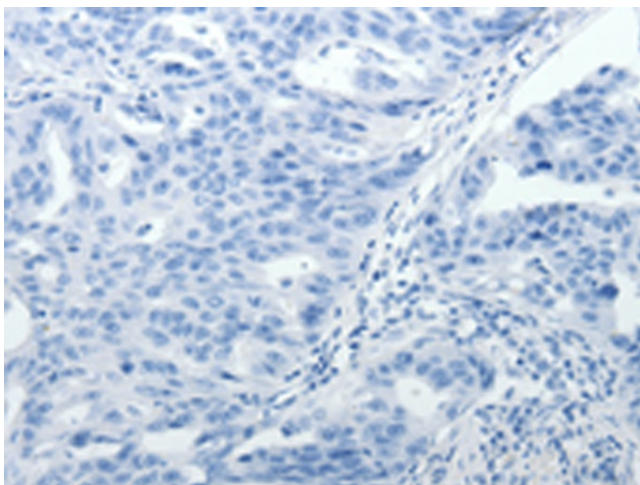
Immunohistochemistry of paraffin-embedded Human liver cancer tissue using TA322371 (SOCS7 Antibody) at dilution 1/30 (Original magnification: $\times 200$)



Immunohistochemistry of paraffin-embedded Human liver cancer tissue using TA322371 (SOCS7 Antibody) at dilution 1/30, treated with synthetic peptide. (Original magnification: $\times 200$)



Immunohistochemistry of paraffin-embedded Human ovarian cancer tissue using TA322371 (SOCS7 Antibody) at dilution 1/30 (Original magnification: $\times 200$)



Immunohistochemistry of paraffin-embedded Human ovarian cancer tissue using TA322371 (SOCS7 Antibody) at dilution 1/30, treated with synthetic peptide. (Original magnification: $\times 200$)