

## Product datasheet for **TA322369S**

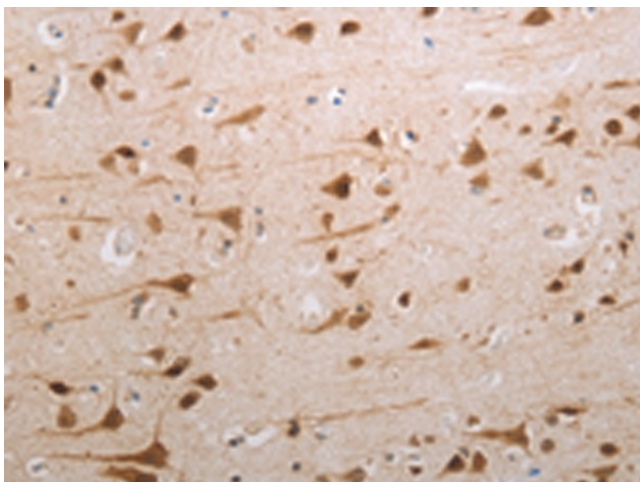
### MDC1 Rabbit Polyclonal Antibody

#### Product data:

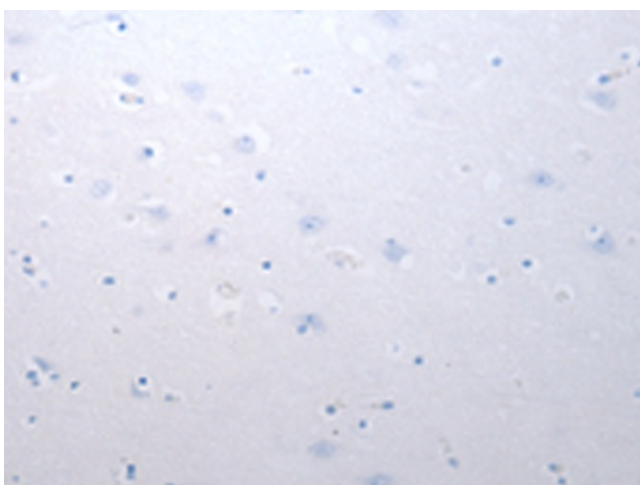
Product Type:	Primary Antibodies
Applications:	IHC
Recommended Dilution:	IHC: 100-300 Positive control: Human brain Predicted cell location: Cytoplasm, Nucleus
Reactivity:	Human
Host:	Rabbit
Isotype:	IgG
Clonality:	Polyclonal
Immunogen:	Synthetic peptide corresponding to a region derived from 1866-1881 amino acids of Human mediator of DNA-damage checkpoint 1
Formulation:	PBS pH7.3, 0.05% NaN <sub>3</sub> , 50% glycerol
Purification:	Antigen affinity purification
Conjugation:	Unconjugated
Storage:	Store at -20°C as received.
Stability:	Stable for 12 months from date of receipt.
Gene Name:	mediator of DNA damage checkpoint 1
Database Link:	<a href="#">NP_055456</a> <a href="#">Entrez Gene 9656 Human</a> <a href="#">Q14676</a>
Background:	The protein encoded by this gene contains an N-terminal forkhead domain; two BRCA1 C-terminal (BRCT) motifs and a central domain with 13 repetitions of an approximately 41-amino acid sequence. The encoded protein is required to activate the intra-S phase and G2/M phase cell cycle checkpoints in response to DNA damage. This nuclear protein interacts with phosphorylated histone H2AX near sites of DNA double-strand breaks through its BRCT motifs; and facilitates recruitment of the ATM kinase and meiotic recombination 11 protein complex to DNA damage foci.
Synonyms:	NFBD1



[View online »](#)

**Product images:**

Immunohistochemistry of paraffin-embedded Human brain tissue using [TA322369] (MDC1 Antibody) at dilution 1/80 (Original magnification: ×200)



Immunohistochemistry of paraffin-embedded Human brain tissue using [TA322369] (MDC1 Antibody) at dilution 1/80, treated with synthetic peptide. (Original magnification: ×200)