

Product datasheet for **TA322366S**

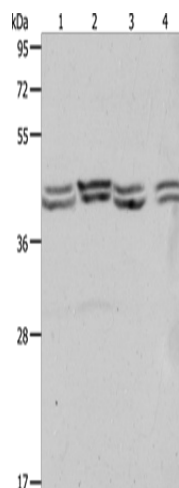
PSMD6 Rabbit Polyclonal Antibody

Product data:

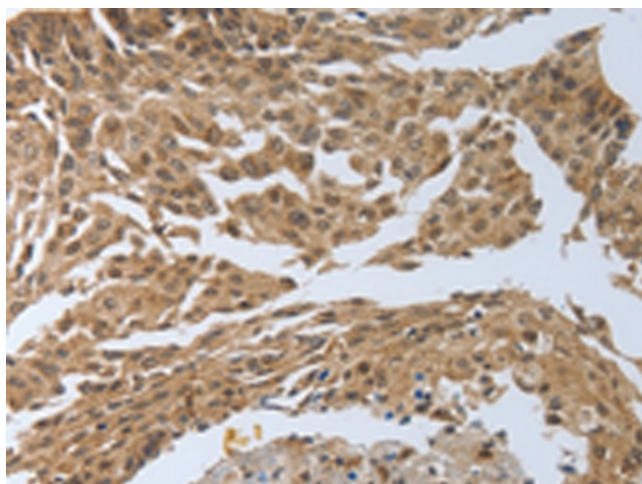
Product Type:	Primary Antibodies
Applications:	IHC, WB
Recommended Dilution:	WB: 500-2000 WB positive control: Hela, 293T, NIH/3T3 and Jurkat cells IHC: 50-200 Positive control: Human cervical cancer Predicted cell location: Cytoplasm, Nucleus
Reactivity:	Human, Mouse
Host:	Rabbit
Isotype:	IgG
Clonality:	Polyclonal
Immunogen:	Synthetic peptide corresponding to a region derived from 371-384 amino acids of Human proteasome (prosome, macropain) 26S subunit, non-ATPase, 6
Formulation:	PBS pH7.3, 0.05% NaN ₃ , 50% glycerol
Purification:	Antigen affinity purification
Conjugation:	Unconjugated
Storage:	Store at -20°C as received.
Stability:	Stable for 12 months from date of receipt.
Gene Name:	proteasome 26S subunit, non-ATPase 6
Database Link:	NP_055629 Entrez Gene 66413 Mouse Entrez Gene 9861 Human Q15008
Background:	This gene encodes a member of the protease subunit S10 family. The encoded protein is a subunit of the 26S proteasome which colocalizes with DNA damage foci and is involved in the ATP-dependent degradation of ubiquitinated proteins. Alternative splicing results in multiple transcript variants.
Synonyms:	p42A; p44S10; Rpn7; S10; SGA-113M
Protein Pathways:	Proteasome



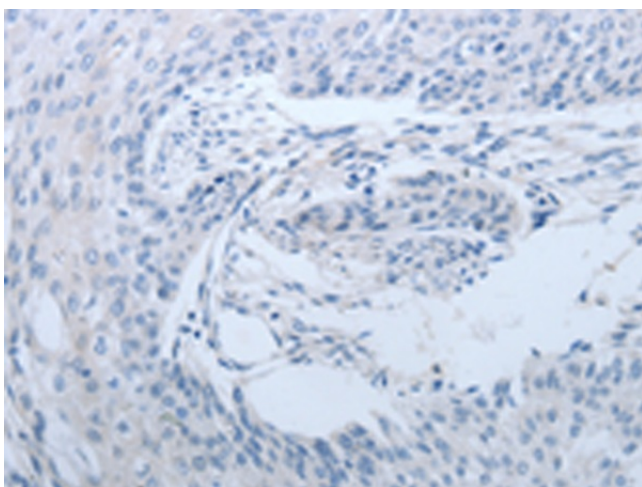
[View online »](#)

Product images:

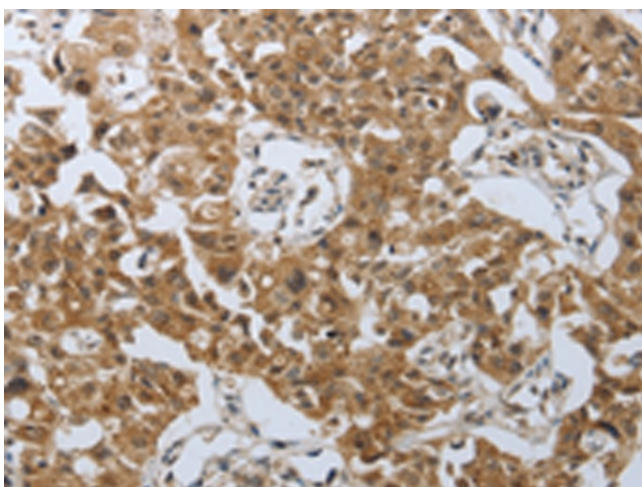
Gel: 10%SDS-PAGE
Lysate: 40 µg
Lane 1-4: HeLa cells
293T cells
NIH/3T3 cells
Jurkat cells
Primary antibody: [TA322366] (PSMD6 Antibody)
at dilution 1/650
Secondary antibody: Goat anti rabbit IgG at
1/8000 dilution
Exposure time: 1 minute



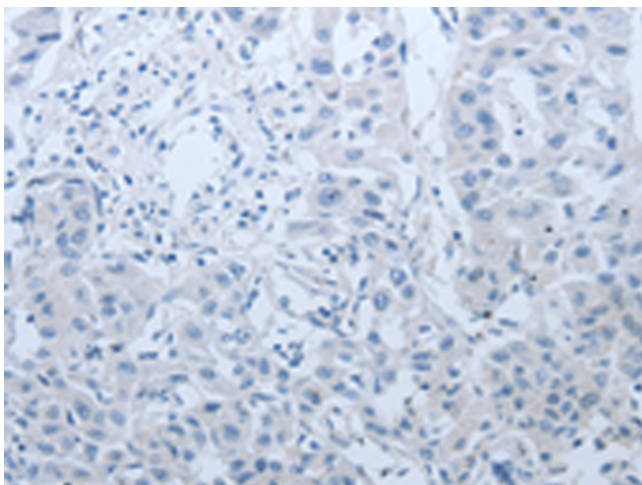
Immunohistochemistry of paraffin-embedded
Human cervical cancer tissue using [TA322366]
(PSMD6 Antibody) at dilution 1/40 (Original
magnification: ×200)



Immunohistochemistry of paraffin-embedded Human cervical cancer tissue using [TA322366] (PSMD6 Antibody) at dilution 1/40, treated with synthetic peptide. (Original magnification: ×200)



Immunohistochemistry of paraffin-embedded Human lung cancer tissue using [TA322366] (PSMD6 Antibody) at dilution 1/40 (Original magnification: ×200)



Immunohistochemistry of paraffin-embedded Human lung cancer tissue using [TA322366] (PSMD6 Antibody) at dilution 1/40, treated with synthetic peptide. (Original magnification: ×200)