

Product datasheet for **TA322365S**

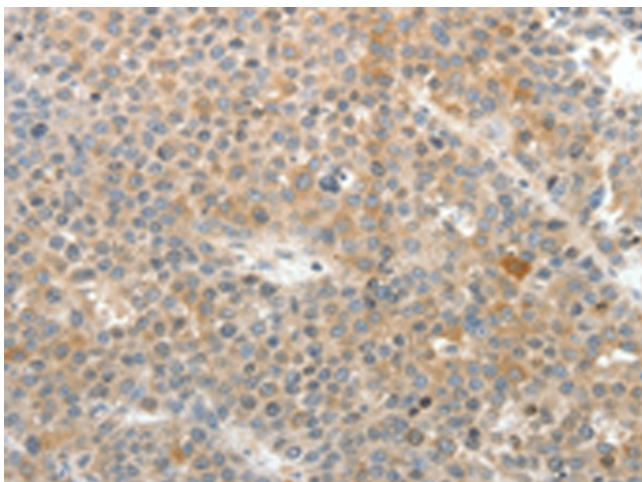
SV2A Rabbit Polyclonal Antibody

Product data:

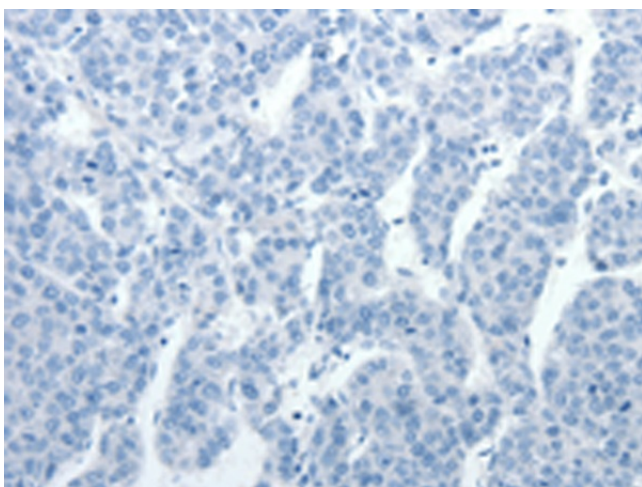
Product Type:	Primary Antibodies
Applications:	IHC
Recommended Dilution:	IHC: 25-100 Positive control: Human liver cancer Predicted cell location: Cytoplasm
Reactivity:	Human, Mouse, Rat
Host:	Rabbit
Isotype:	IgG
Clonality:	Polyclonal
Immunogen:	Synthetic peptide corresponding to a region derived from 21-35 amino acids of human synaptic vesicle glycoprotein 2A
Formulation:	PBS pH7.3, 0.05% NaN ₃ , 50% glycerol
Purification:	Antigen affinity purification
Conjugation:	Unconjugated
Storage:	Store at -20°C as received.
Stability:	Stable for 12 months from date of receipt.
Gene Name:	synaptic vesicle glycoprotein 2A
Database Link:	NP_055664 Entrez Gene 64051 Mouse Entrez Gene 117559 Rat Entrez Gene 9900 Human Q7L0J3
Background:	This protein plays a role in the control of regulated secretion in neural and endocrine cells; enhancing selectively low-frequency neurotransmission. Positively regulates vesicle fusion by maintaining the readily releasable pool of secretory vesicles. It is identified as the brain binding-site for the antiepileptic drug levetiracetam/lev.
Synonyms:	SV2
Protein Families:	Secreted Protein, Transmembrane
Protein Pathways:	ECM-receptor interaction



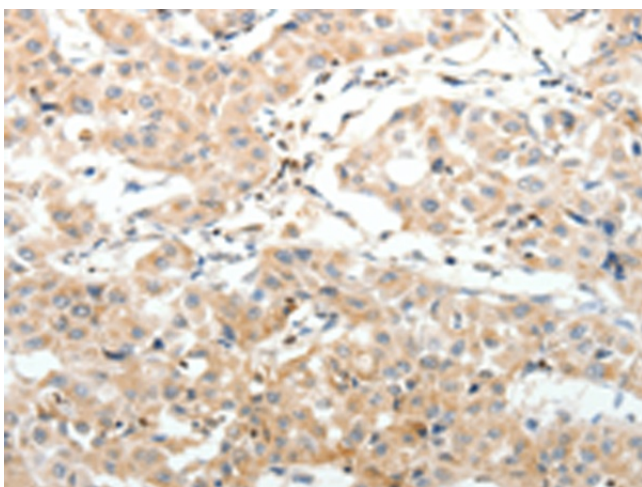
[View online »](#)

Product images:

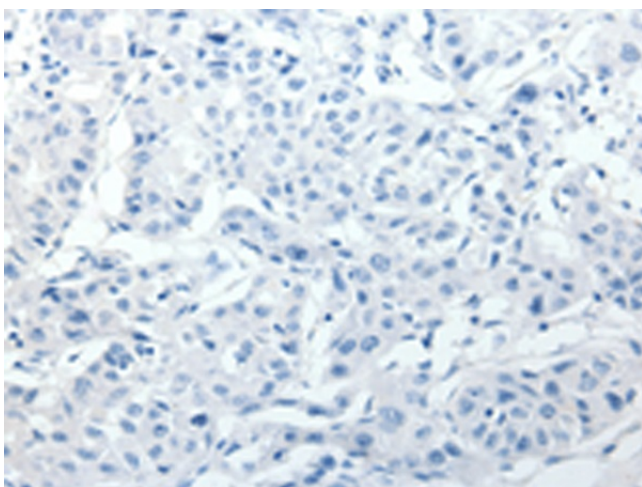
Immunohistochemistry of paraffin-embedded Human liver cancer tissue using [TA322365] (SV2A Antibody) at dilution 1/25 (Original magnification: $\times 200$)



Immunohistochemistry of paraffin-embedded Human liver cancer tissue using [TA322365] (SV2A Antibody) at dilution 1/25, treated with synthetic peptide. (Original magnification: $\times 200$)



Immunohistochemistry of paraffin-embedded Human lung cancer tissue using [TA322365] (SV2A Antibody) at dilution 1/25 (Original magnification: $\times 200$)



Immunohistochemistry of paraffin-embedded Human lung cancer tissue using [TA322365] (SV2A Antibody) at dilution 1/25, treated with synthetic peptide. (Original magnification: $\times 200$)