

## Product datasheet for **TA322362**

### FOXJ3 Rabbit Polyclonal Antibody

#### Product data:

Product Type:	Primary Antibodies
Applications:	WB
Recommended Dilution:	WB: 1000-3000 WB positive control: Human liver cancer tissue
Reactivity:	Human, Mouse, Rat
Host:	Rabbit
Isotype:	IgG
Clonality:	Polyclonal
Immunogen:	Synthetic peptide corresponding to a region derived from 610-622 amino acids of Human forkhead box J1
Formulation:	PBS pH7.3, 0.05% NaN <sub>3</sub> , 50% glycerol
Concentration:	lot specific
Purification:	Antigen affinity purification
Conjugation:	Unconjugated
Storage:	Store at -20°C as received.
Stability:	Stable for 12 months from date of receipt.
Predicted Protein Size:	69 kDa
Gene Name:	forkhead box J3
Database Link:	<a href="#">NP_055762</a> <a href="#">Entrez Gene 230700</a> <a href="#">MouseEntrez Gene 313554</a> <a href="#">RatEntrez Gene 22887</a> <a href="#">Human Q9UPW0</a>



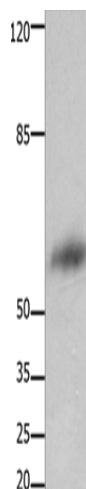
[View online »](#)

**Background:**

forkhead/winged helix transcription factor; Foxj3; which was expressed in embryonic and adult skeletal muscle. The 100-kb; 13-exon mouse Foxj3 gene on chromosome 4 encodes a 623 amino acid (aa) protein from an mRNA of at least 4.8 kb (Human FOXJ3: Chr 1; 627 aa; 5.3-kb mRNA). During the stages of mouse development investigated Foxj3 is expressed in neuroectoderm; in neural crest; and in many structures derived from neural crest cells; such as facioacoustic; trigeminal; and dorsal root ganglia. Stripes of expression appear at E10.5 in the location of myotomes and expand ventrally in a pattern similar to the developing body wall musculature. Developing limbs have a complex pattern of Foxj3 expression that at E12.5 colocalizes with the condensed mesenchyme of the skeletal primordia.

**Synonyms:**

MGC165036; MGC176686

**Product images:**

Gel: 10%SDS-PAGE

Lysate: 40 µg

Lane: Human liver cancer tissue

Primary antibody: TA322362 (FOXJ3 Antibody) at dilution 1/800

Secondary antibody: Goat anti rabbit IgG at 1/8000 dilution

Exposure time: 1 minute