

## Product datasheet for **TA322353**

### SUZ12 Rabbit Polyclonal Antibody

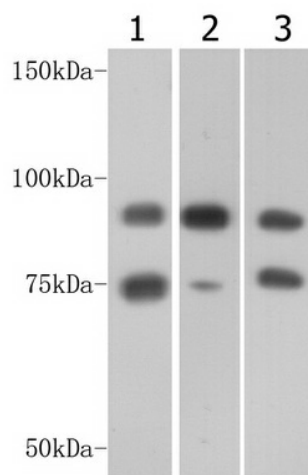
#### Product data:

Product Type:	Primary Antibodies
Applications:	WB
Recommended Dilution:	ELISA: 1:1000-5000, WB: 1:1000-2000
Reactivity:	Human, Mouse
Host:	Rabbit
Isotype:	IgG
Clonality:	Polyclonal
Immunogen:	Synthetic peptide (KLH-coupled) derived from human SUZ12
Formulation:	PBS pH7.3, 0.05% NaN <sub>3</sub> , 50% glycerol
Concentration:	lot specific
Purification:	Antigen affinity purification
Conjugation:	Unconjugated
Storage:	Store at -20°C as received.
Stability:	Stable for 12 months from date of receipt.
Predicted Protein Size:	90 kDa
Gene Name:	SUZ12 polycomb repressive complex 2 subunit
Database Link:	<a href="#">NP_056170</a> <a href="#">Entrez Gene 52615 Mouse</a> <a href="#">Entrez Gene 23512 Human</a> <a href="#">Q15022</a>
Background:	This zinc finger gene has been identified at the breakpoints of a recurrent chromosomal translocation reported in endometrial stromal sarcoma. Recombination of these breakpoints results in the fusion of this gene and JAZF1. The protein encoded by this gene contains a zinc finger domain in the C terminus of the coding region.?
Synonyms:	CHET9; JAZ1
Protein Families:	Transcription Factors



[View online »](#)

## Product images:



Predicted band size: 90 kDa. Positive control: MCF-7, HeLa and NCCIT cell lysate. Recommended dilution: 1/ 1000-2000. (Gel: 8%SDS-PAGE Lane 1: MCF-7 cell lysate Lane 2: HeLa cell lysate Lane 3: NCCIT cell lysate Lysates: 30 ug per lane Primary antibody: 1/1000 dilution Secondary antibody: Goat anti Rabbit IgG - H&L (HRP) at 1/10000 dilution Exposure time: 1 minute)