

Product datasheet for **TA322350**

AASDHPPT Rabbit Polyclonal Antibody

Product data:

Product Type:	Primary Antibodies
Applications:	IHC, WB
Recommended Dilution:	WB: 500-2000 WB positive control: Human fetal brain tissue IHC: 50-200 Positive control: Human thyroid cancer Predicted cell location: Cytoplasm
Reactivity:	Human, Mouse, Rat
Host:	Rabbit
Isotype:	IgG
Clonality:	Polyclonal
Immunogen:	Full length fusion protein
Formulation:	PBS pH7.3, 0.05% NaN ₃ , 50% glycerol
Concentration:	lot specific
Purification:	Antigen affinity purification
Conjugation:	Unconjugated
Storage:	Store at -20°C as received.
Stability:	Stable for 12 months from date of receipt.
Predicted Protein Size:	36 kDa
Gene Name:	aminoadipate-semialdehyde dehydrogenase-phosphopantetheinyl transferase
Database Link:	NP_056238 Entrez Gene 67618 Mouse Entrez Gene 300328 Rat Entrez Gene 60496 Human Q9NRN7
Background:	The protein encoded by this gene is similar to <i>Saccharomyces cerevisiae</i> LYS5; which is required for the activation of the alpha-aminoadipate dehydrogenase in the biosynthetic pathway of lysine. Yeast alpha-aminoadipate dehydrogenase converts alpha-biosynthetic-aminoadipate semialdehyde to alpha-aminoadipate. It has been suggested that defects in the human gene result in pipecolic acidemia.

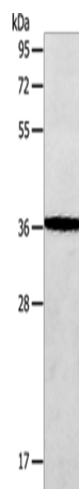


[View online »](#)

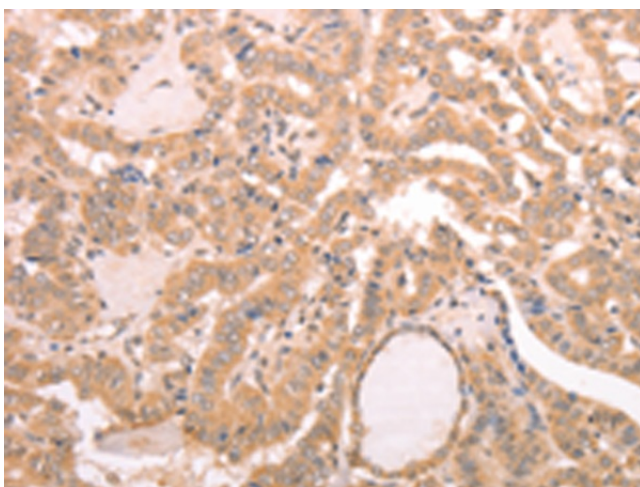
Synonyms: AASD-PPT; CGI-80; LYS2; LYS5

Protein Pathways: Lysine biosynthesis, Lysine degradation, Metabolic pathways

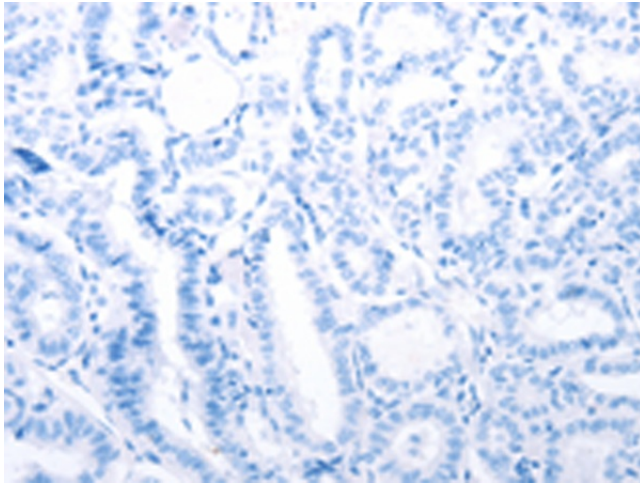
Product images:



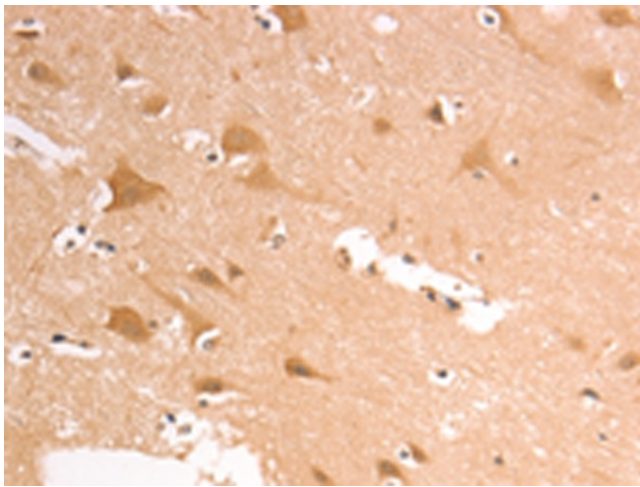
Gel: 10%SDS-PAGE
Lysate: 40 μ g
Lane: Human fetal brain tissue
Primary antibody: TA322350 (AASDHPPT Antibody) at dilution 1/650
Secondary antibody: Goat anti rabbit IgG at 1/8000 dilution
Exposure time: 30 seconds



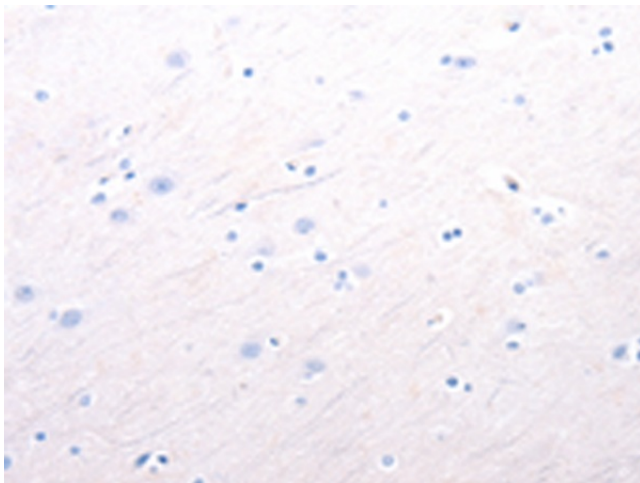
Immunohistochemistry of paraffin-embedded Human thyroid cancer tissue using TA322350 (AASDHPPT Antibody) at dilution 1/30 (Original magnification: \times 200)



Immunohistochemistry of paraffin-embedded Human thyroid cancer tissue using TA322350 (AASDHPPT Antibody) at dilution 1/30, treated with fusion protein. (Original magnification: $\times 200$)



Immunohistochemistry of paraffin-embedded Human brain tissue using TA322350 (AASDHPPT Antibody) at dilution 1/30 (Original magnification: $\times 200$)



Immunohistochemistry of paraffin-embedded Human brain tissue using TA322350 (AASDHPPT Antibody) at dilution 1/30, treated with fusion protein. (Original magnification: $\times 200$)