

## Product datasheet for **TA322346S**

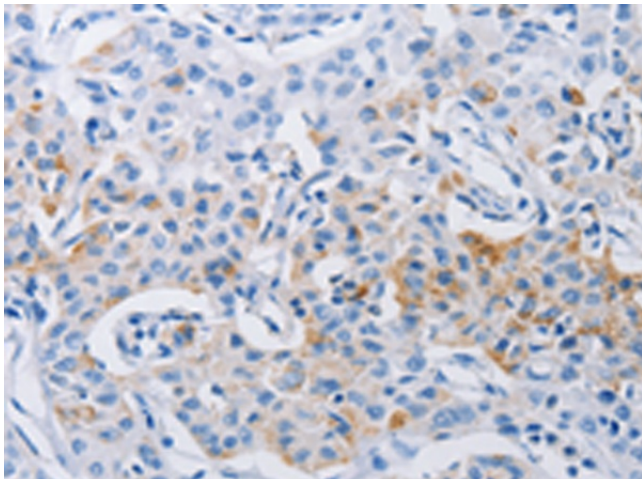
### LRIG1 Rabbit Polyclonal Antibody

#### Product data:

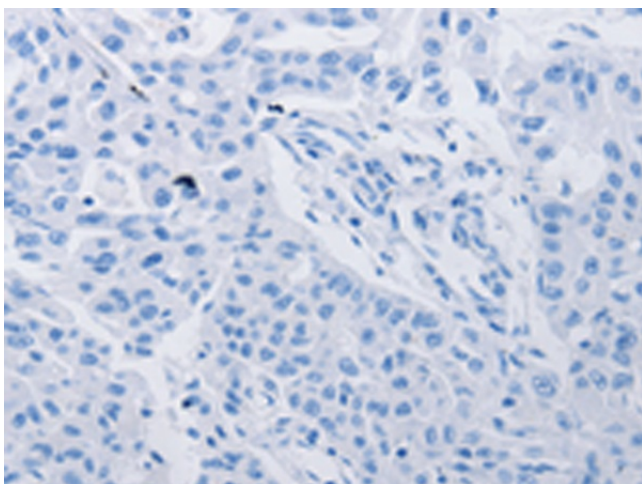
Product Type:	Primary Antibodies
Applications:	IHC
Recommended Dilution:	IHC: 50-200 Positive control: Human lung cancer Predicted cell location: Cytoplasm, Cell membrane
Reactivity:	Human
Host:	Rabbit
Isotype:	IgG
Clonality:	Polyclonal
Immunogen:	Synthetic peptide corresponding to a region derived from 1073-1085 amino acids of Human leucine-rich repeats and immunoglobulin-like domains 1
Formulation:	PBS pH7.3, 0.05% NaN <sub>3</sub> , 50% glycerol
Purification:	Antigen affinity purification
Conjugation:	Unconjugated
Storage:	Store at -20°C as received.
Stability:	Stable for 12 months from date of receipt.
Gene Name:	leucine-rich repeats and immunoglobulin like domains 1
Database Link:	<a href="#">NP_056356</a> <a href="#">Entrez Gene 26018 Human</a> <a href="#">Q96JA1</a>
Background:	Leucine-rich repeats and immunoglobulin-like domains protein 1 is a protein that in humans is encoded by the LRIG1 gene. It encodes a transmembrane protein that has been shown to interact with receptor tyrosine kinases of the EGFR-family; MET and RET. Acts as a feedback negative regulator of signaling by receptor tyrosine kinases; through a mechanism that involves enhancement of receptor ubiquitination and accelerated intracellular degradation.
Synonyms:	LIG-1; LIG1
Protein Families:	Transmembrane



[View online »](#)

**Product images:**

Immunohistochemistry of paraffin-embedded Human lung cancer tissue using [TA322346] (LRIG1 Antibody) at dilution 1/120 (Original magnification:  $\times 200$ )



Immunohistochemistry of paraffin-embedded Human lung cancer tissue using [TA322346] (LRIG1 Antibody) at dilution 1/120, treated with synthetic peptide. (Original magnification:  $\times 200$ )