

## Product datasheet for **TA322342**

### Neurobeachin (NBEA) Rabbit Polyclonal Antibody

#### Product data:

Product Type:	Primary Antibodies
Applications:	IHC
Recommended Dilution:	IHC: 25-100 Positive control: Human ovarian cancer Predicted cell location: Cytoplasm
Reactivity:	Human, Mouse
Host:	Rabbit
Isotype:	IgG
Clonality:	Polyclonal
Immunogen:	Synthetic peptide corresponding to a region derived from 2934-2946 amino acids of Human neurobeachin
Formulation:	PBS pH7.3, 0.05% NaN <sub>3</sub> , 50% glycerol
Concentration:	lot specific
Purification:	Antigen affinity purification
Conjugation:	Unconjugated
Storage:	Store at -20°C as received.
Stability:	Stable for 12 months from date of receipt.
Gene Name:	neurobeachin
Database Link:	<a href="#">NP_056493</a> <a href="#">Entrez Gene 26422 Mouse</a> <a href="#">Entrez Gene 26960 Human</a> <a href="#">Q8NFP9</a>



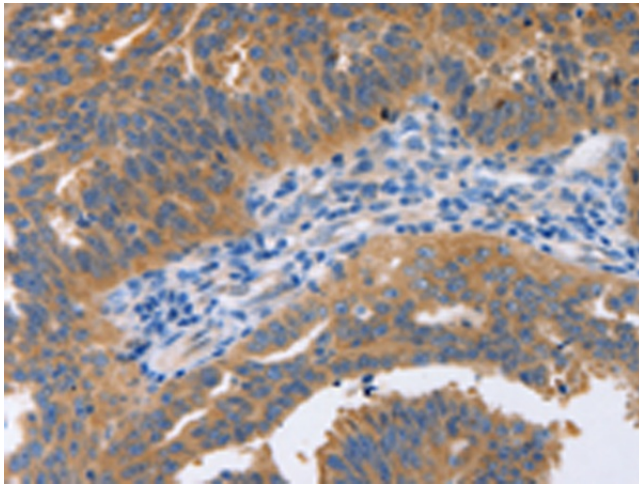
[View online »](#)

**Background:**

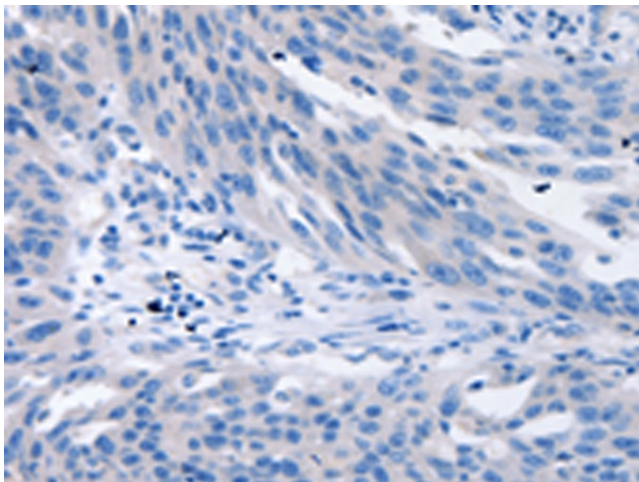
This gene encodes a member of a large; diverse group of A-kinase anchor proteins that target the activity of protein kinase A to specific subcellular sites by binding to its type II regulatory subunits. Brain-specific expression and coat protein-like membrane recruitment of a highly similar protein in mouse suggest an involvement in neuronal post-Golgi membrane traffic. Mutations in this gene may be associated with a form of autism. This gene and its expression are frequently disrupted in patients with multiple myeloma. Alternative splicing results in multiple transcript variants encoding distinct isoforms. Additional transcript variants may exist; but their full-length nature has not been determined.

**Synonyms:**

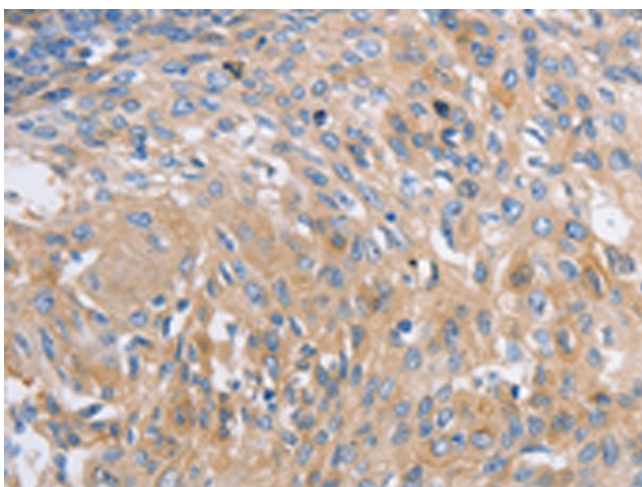
BCL8B; LYST2

**Product images:**

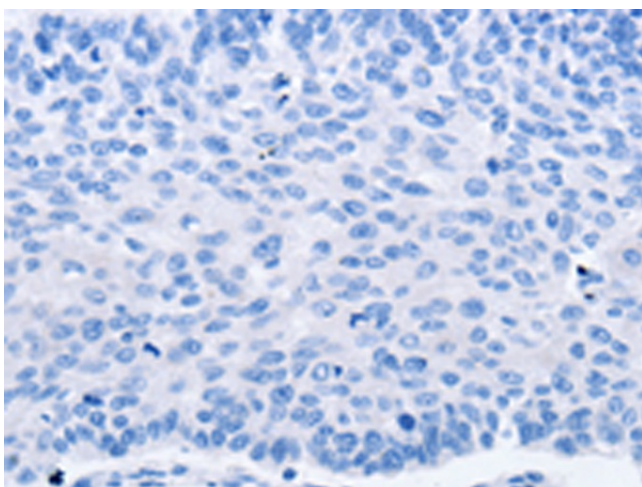
Immunohistochemistry of paraffin-embedded Human ovarian cancer tissue using TA322342 (NBEA Antibody) at dilution 1/60 (Original magnification:  $\times 200$ )



Immunohistochemistry of paraffin-embedded Human ovarian cancer tissue using TA322342 (NBEA Antibody) at dilution 1/60, treated with synthetic peptide. (Original magnification:  $\times 200$ )



Immunohistochemistry of paraffin-embedded Human cervical cancer tissue using TA322342 (NBEA Antibody) at dilution 1/60 (Original magnification:  $\times 200$ )



Immunohistochemistry of paraffin-embedded Human cervical cancer tissue using TA322342 (NBEA Antibody) at dilution 1/60, treated with synthetic peptide. (Original magnification:  $\times 200$ )