

## Product datasheet for **TA322340S**

### APIP Rabbit Polyclonal Antibody

#### Product data:

Product Type:	Primary Antibodies
Applications:	IHC, WB
Recommended Dilution:	WB: 200-1000 WB positive control: Mouse heart tissue IHC: 25-100 Positive control: Human thyroid cancer Predicted cell location: Cytoplasm, Nucleus
Reactivity:	Human, Mouse
Host:	Rabbit
Isotype:	IgG
Clonality:	Polyclonal
Immunogen:	Full length fusion protein
Formulation:	PBS pH7.3, 0.05% NaN <sub>3</sub> , 50% glycerol
Purification:	Antigen affinity purification
Conjugation:	Unconjugated
Storage:	Store at -20°C as received.
Stability:	Stable for 12 months from date of receipt.
Predicted Protein Size:	27 kDa
Gene Name:	APAF1 interacting protein
Database Link:	<a href="#">NP_057041</a> <a href="#">Entrez Gene 56369 Mouse</a> <a href="#">Entrez Gene 51074 Human</a> <a href="#">Q96GX9</a>

**Background:** APIP is an APAF1 (MIM 602233)-interacting protein that acts as a negative regulator of ischemic/hypoxic injury. The protein highly expressed in skeletal muscle and heart and binds to the CARD of Apaf-1 in competition with caspase-9. Exogenous APIP inhibits cytochrome c-induced activation of caspase-3 and caspase-9; and suppresses cell death triggered by mitochondrial apoptotic stimuli through inhibiting the downstream activity of cytochrome c released from mitochondria.

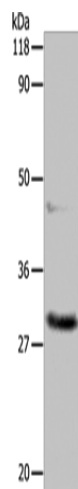


[View online »](#)

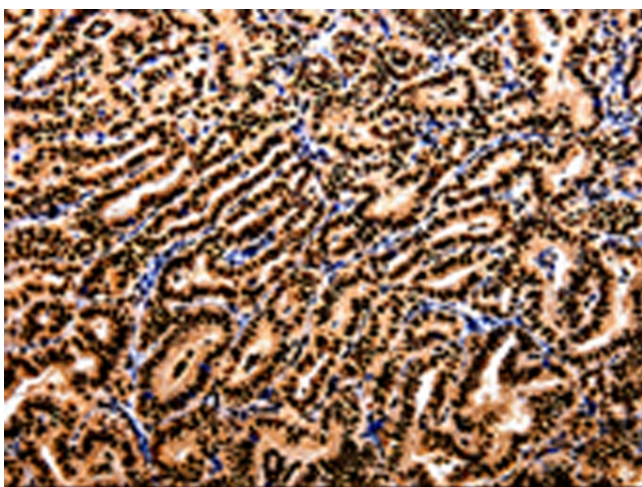
**Synonyms:** APIP2; CGI-29; CGI29; hAPIP; MMRP19

**Protein Pathways:** Cysteine and methionine metabolism, Metabolic pathways

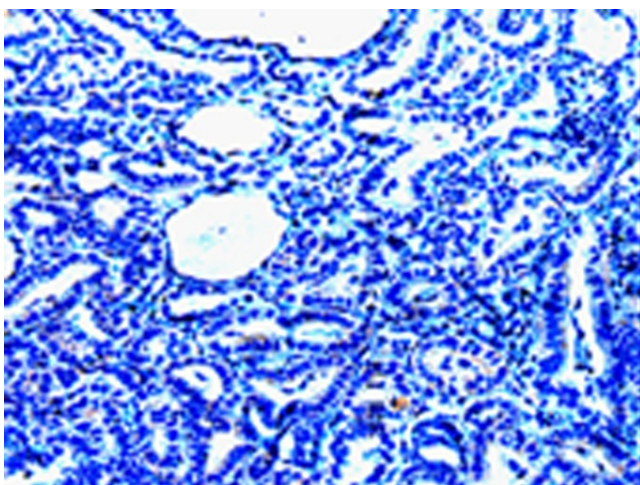
**Product images:**



Gel: 10%SDS-PAGE  
Lysate: 60 µg  
Lane: Mouse heart tissue  
Primary antibody: [TA322340] (APIP Antibody) at dilution 1/200  
Secondary antibody: Goat anti rabbit IgG at 1/8000 dilution  
Exposure time: 10 seconds



Immunohistochemistry of paraffin-embedded Human thyroid cancer tissue using [TA322340] (APIP Antibody) at dilution 1/10 (Original magnification: ×200)



Immunohistochemistry of paraffin-embedded Human thyroid cancer tissue using [TA322340] (APIP Antibody) at dilution 1/10, treated with fusion protein. (Original magnification:  $\times 200$ )