

Product datasheet for **TA322340**

APIP Rabbit Polyclonal Antibody

Product data:

Product Type:	Primary Antibodies
Applications:	IHC, WB
Recommended Dilution:	WB: 200-1000 WB positive control: Mouse heart tissue IHC: 25-100 Positive control: Human thyroid cancer Predicted cell location: Cytoplasm, Nucleus
Reactivity:	Human, Mouse
Host:	Rabbit
Isotype:	IgG
Clonality:	Polyclonal
Immunogen:	Full length fusion protein
Formulation:	PBS pH7.3, 0.05% NaN ₃ , 50% glycerol
Concentration:	lot specific
Purification:	Antigen affinity purification
Conjugation:	Unconjugated
Storage:	Store at -20°C as received.
Stability:	Stable for 12 months from date of receipt.
Predicted Protein Size:	27 kDa
Gene Name:	APAF1 interacting protein
Database Link:	NP_057041 Entrez Gene 56369 Mouse Entrez Gene 51074 Human Q96GX9



[View online »](#)

Background:

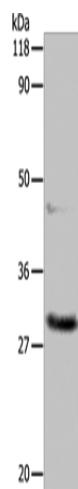
APIP is an APAF1 (MIM 602233)-interacting protein that acts as a negative regulator of ischemic/hypoxic injury. The protein is highly expressed in skeletal muscle and heart and binds to the CARD of Apaf-1 in competition with caspase-9. Exogenous APIP inhibits cytochrome c-induced activation of caspase-3 and caspase-9; and suppresses cell death triggered by mitochondrial apoptotic stimuli through inhibiting the downstream activity of cytochrome c released from mitochondria.

Synonyms:

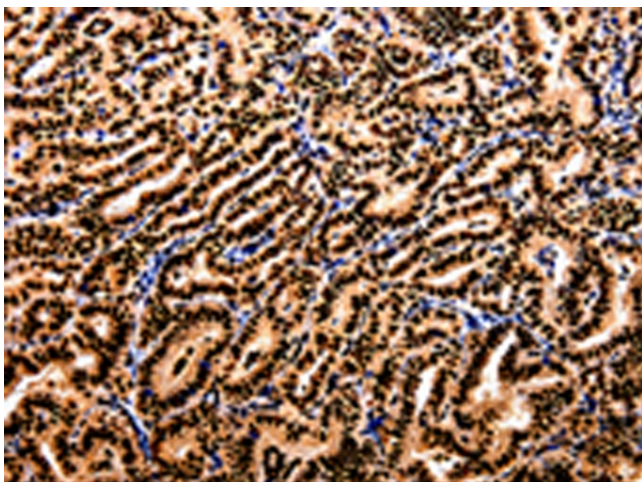
APIP2; CGI-29; CGI29; hAPIP; MMRP19

Protein Pathways:

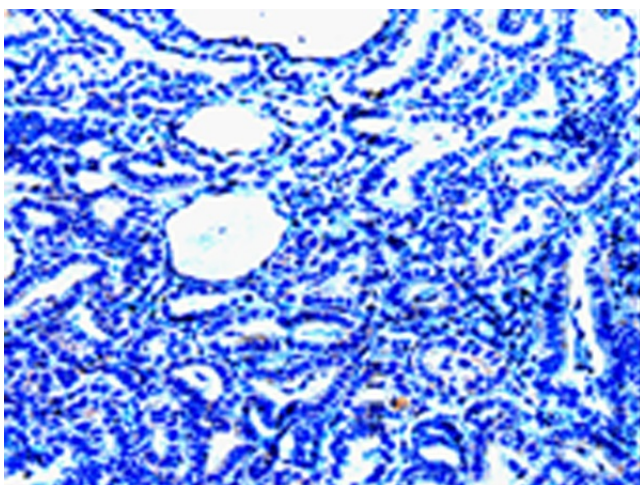
Cysteine and methionine metabolism, Metabolic pathways

Product images:

Gel: 10%SDS-PAGE
Lysate: 60 µg
Lane: Mouse heart tissue
Primary antibody: TA322340 (APIP Antibody) at dilution 1/200
Secondary antibody: Goat anti rabbit IgG at 1/8000 dilution
Exposure time: 10 seconds



Immunohistochemistry of paraffin-embedded Human thyroid cancer tissue using TA322340 (APIP Antibody) at dilution 1/10 (Original magnification: ×200)



Immunohistochemistry of paraffin-embedded Human thyroid cancer tissue using TA322340 (APIP Antibody) at dilution 1/10, treated with fusion protein. (Original magnification: ×200)