

Product datasheet for **TA322339**

SCCPDH Rabbit Polyclonal Antibody

Product data:

Product Type:	Primary Antibodies
Applications:	WB
Recommended Dilution:	WB: 1:500-2000
Reactivity:	Human, Mouse, Rat
Host:	Rabbit
Isotype:	IgG
Clonality:	Polyclonal
Immunogen:	Fusion protein corresponding to N terminal 270 amino acids of human saccharopine dehydrogenase (putative)
Formulation:	PBS pH7.3, 0.05% NaN ₃ , 50% glycerol
Concentration:	lot specific
Purification:	Antigen affinity purification
Conjugation:	Unconjugated
Storage:	Store at -20°C as received.
Stability:	Stable for 12 months from date of receipt.
Predicted Protein Size:	47 kDa
Gene Name:	saccharopine dehydrogenase (putative)
Database Link:	NP_057086 Entrez Gene 109232 MouseEntrez Gene 305021 RatEntrez Gene 51097 Human Q8NBX0



[View online »](#)

Background:

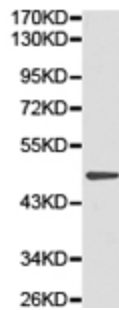
SCCPDH (Probable saccharopine dehydrogenase) is a 429 amino acid protein that belongs to the saccharopine dehydrogenase family. The SCCPDH gene is conserved in chimpanzee, dog, cow, mouse, rat, chicken, fruit fly, mosquito and C.elegans, and maps to human chromosome 1q44. Chromosome 1 is the largest human chromosome spanning about 260 million base pairs and making up 8% of the human genome. There are about 3,000 genes on chromosome 1, and considering the great number of genes there are also a large number of diseases associated with chromosome 1. Stickler syndrome, Parkinsons, Gaucher disease and Usher syndrome are also associated with chromosome 1. A breakpoint has been identified in 1q which disrupts the DISC1 gene and is linked to schizophrenia. Aberrations in chromosome 1 are found in a variety of cancers including head and neck cancer, malignant melanoma and multiple myeloma.

Synonyms:

CGI-49; NET11

Protein Families:

Transmembrane

Product images:

Predicted band size: 47 kDa. Positive control: Liver tissue lysate. Recommended dilution: 1/500-2000. (Gel: 10%SDS-PAGE Lysate: 40 ug Primary antibody: 1/500 dilution Secondary antibody: Goat anti Rabbit IgG - H&L (HRP) at 1/10000 dilution Exposure time: 1 minute)