

## Product datasheet for **TA322336**

### MMP17 Rabbit Polyclonal Antibody

#### Product data:

Product Type:	Primary Antibodies
Applications:	WB
Recommended Dilution:	WB: 500-2000 WB positive control: Human colon cancer tissue
Reactivity:	Human
Host:	Rabbit
Isotype:	IgG
Clonality:	Polyclonal
Immunogen:	Synthetic peptide peptide corresponding to a region derived from 543-556 amino acids of human matrix metalloproteinase 17 (membrane-inserted)
Formulation:	PBS pH7.3, 0.05% NaN <sub>3</sub> , 50% glycerol
Concentration:	lot specific
Purification:	Antigen affinity purification
Conjugation:	Unconjugated
Storage:	Store at -20°C as received.
Stability:	Stable for 12 months from date of receipt.
Predicted Protein Size:	58 kDa
Gene Name:	matrix metalloproteinase 17
Database Link:	<a href="#">NP_057239</a> <a href="#">Entrez Gene 4326 Human</a> <a href="#">Q9ULZ9</a>



[View online »](#)

**Background:**

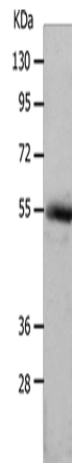
Proteins of the matrix metalloproteinase (MMP) family are involved in the breakdown of extracellular matrix in normal physiological processes; such as embryonic development; reproduction; and tissue remodeling; as well as in disease processes; such as arthritis and metastasis. Most MMP's are secreted as inactive proproteins which are activated when cleaved by extracellular proteinases. The protein encoded by this gene is considered a member of the membrane-type MMP (MT-MMP) subfamily. However; this protein is unique among the MT-MMP's in that it is a GPI-anchored protein rather than a transmembrane protein. The protein activates MMP-2 by cleavage.?

**Synonyms:**

MT4-MMP

**Protein Families:**

Druggable Genome

**Product images:**

Gel: 10+12%SDS-PAGE

Lysate: 40 µg

Lane: Human colon cancer tissue

Primary antibody: TA322336 (MMP17 Antibody)  
at dilution 1/550Secondary antibody: Goat anti rabbit IgG at  
1/8000 dilution

Exposure time: 2 minutes