

Product datasheet for **TA322334**

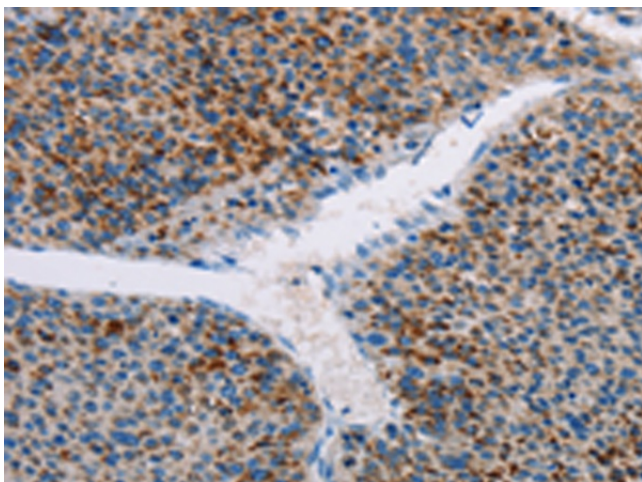
AMOTL2 Rabbit Polyclonal Antibody

Product data:

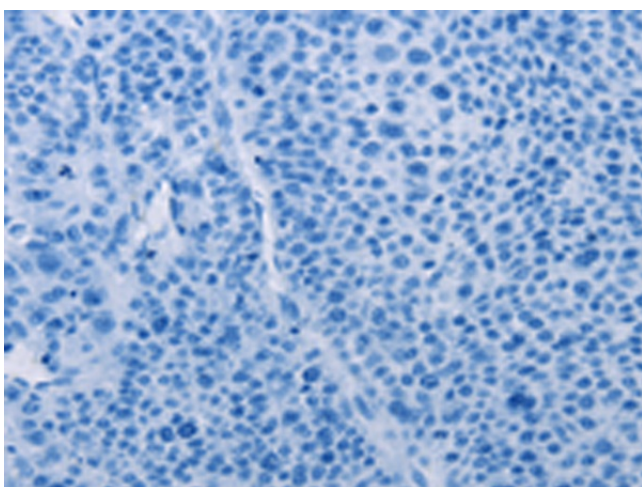
Product Type:	Primary Antibodies
Applications:	IHC
Recommended Dilution:	IHC: 25-100 Positive control: Human liver cancer Predicted cell location: Cytoplasm
Reactivity:	Human, Mouse, Rat
Host:	Rabbit
Isotype:	IgG
Clonality:	Polyclonal
Immunogen:	Fusion protein corresponding to C terminal 200 amino acids of human angiotenin like 2
Formulation:	PBS pH7.3, 0.05% NaN ₃ , 50% glycerol
Concentration:	lot specific
Purification:	Antigen affinity purification
Conjugation:	Unconjugated
Storage:	Store at -20°C as received.
Stability:	Stable for 12 months from date of receipt.
Gene Name:	angiotenin like 2
Database Link:	NP_057285 Entrez Gene 56332 Mouse Entrez Gene 65157 Rat Entrez Gene 51421 Human Q9Y2J4
Background:	Angiotenin is a protein that binds angiotenin, a circulating inhibitor of the formation of new blood vessels (angiogenesis). Angiotenin mediates angiotenin inhibition of endothelial cell migration and tube formation in vitro. The protein encoded by this gene is related to angiotenin and is a member of the motins protein family.
Synonyms:	LCCP



[View online »](#)

Product images:

Immunohistochemistry of paraffin-embedded Human liver cancer tissue using TA322334 (AMOTL2 Antibody) at dilution 1/20 (Original magnification: $\times 200$)



Immunohistochemistry of paraffin-embedded Human liver cancer tissue using TA322334 (AMOTL2 Antibody) at dilution 1/20, treated with fusion protein. (Original magnification: $\times 200$)