

## Product datasheet for **TA322333S**

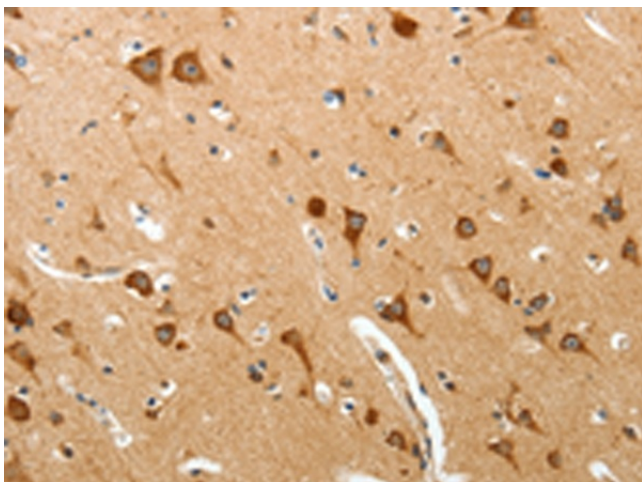
### **BIRC6 Rabbit Polyclonal Antibody**

#### **Product data:**

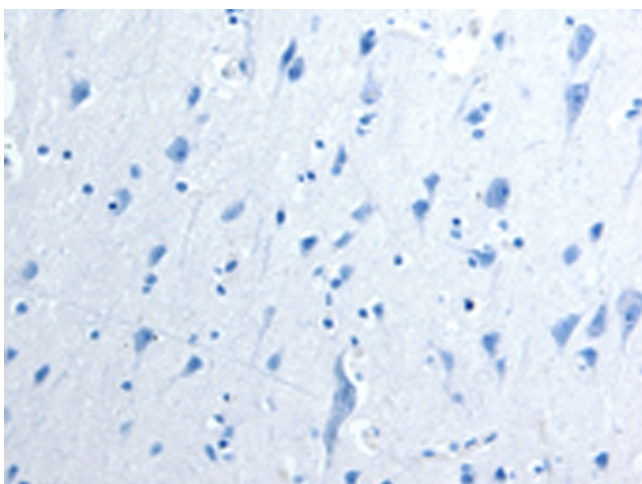
Product Type:	Primary Antibodies
Applications:	IHC
Recommended Dilution:	IHC: 50-200 Positive control: Human brain Predicted cell location: Cytoplasm
Reactivity:	Human, Mouse
Host:	Rabbit
Isotype:	IgG
Clonality:	Polyclonal
Immunogen:	Synthetic peptide corresponding to a region derived from 4842-4857 amino acids of human baculoviral IAP repeat containing 6
Formulation:	PBS pH7.3, 0.05% NaN <sub>3</sub> , 50% glycerol
Purification:	Antigen affinity purification
Conjugation:	Unconjugated
Storage:	Store at -20°C as received.
Stability:	Stable for 12 months from date of receipt.
Gene Name:	baculoviral IAP repeat containing 6
Database Link:	<a href="#">NP_057336</a> <a href="#">Entrez Gene 12211 Mouse</a> <a href="#">Entrez Gene 57448 Human</a> <a href="#">Q9NR09</a>
Background:	This gene encodes a protein with a BIR (baculoviral inhibition of apoptosis protein repeat) domain and a UBCc (ubiquitin-conjugating enzyme E2; catalytic) domain. This protein inhibits apoptosis by facilitating the degradation of apoptotic proteins by ubiquitination.
Synonyms:	APOLLON; BRUCE
Protein Families:	Druggable Genome
Protein Pathways:	Ubiquitin mediated proteolysis



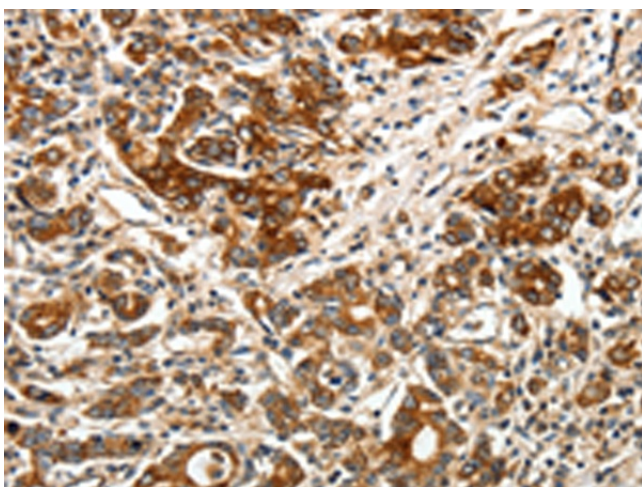
[View online »](#)

**Product images:**

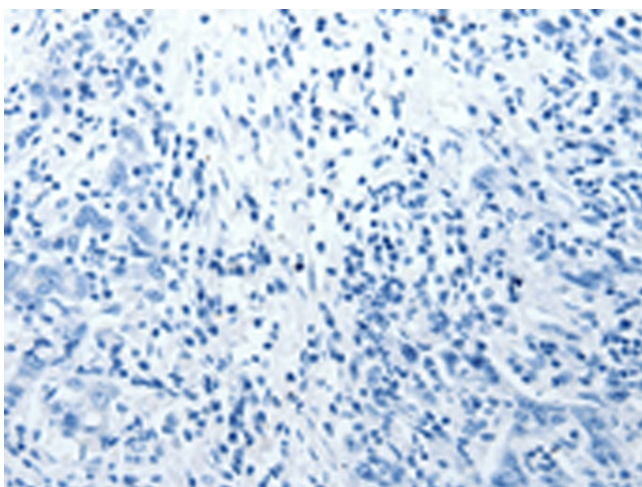
Immunohistochemistry of paraffin-embedded Human brain tissue using [TA322333] (BIRC6 Antibody) at dilution 1/40 (Original magnification: ×200)



Immunohistochemistry of paraffin-embedded Human brain tissue using [TA322333] (BIRC6 Antibody) at dilution 1/40, treated with synthetic peptide. (Original magnification: ×200)



Immunohistochemistry of paraffin-embedded Human gastric cancer tissue using [TA322333] (BIRC6 Antibody) at dilution 1/40 (Original magnification: ×200)



Immunohistochemistry of paraffin-embedded Human gastric cancer tissue using [TA322333] (BIRC6 Antibody) at dilution 1/40, treated with synthetic peptide. (Original magnification: ×200)