

## Product datasheet for **TA322329**

### VGLL1 Rabbit Polyclonal Antibody

#### Product data:

Product Type:	Primary Antibodies
Applications:	WB
Recommended Dilution:	WB: 2000-10000 WB positive control: 293T cells
Reactivity:	Human
Host:	Rabbit
Isotype:	IgG
Clonality:	Polyclonal
Immunogen:	Synthetic peptide corresponding to a region derived from 62-75 amino acids of human vestigial like 1 (Drosophila)
Formulation:	PBS pH7.3, 0.05% NaN <sub>3</sub> , 50% glycerol
Concentration:	lot specific
Purification:	Antigen affinity purification
Conjugation:	Unconjugated
Storage:	Store at -20°C as received.
Stability:	Stable for 12 months from date of receipt.
Predicted Protein Size:	29 kDa
Gene Name:	vestigial like family member 1
Database Link:	<a href="#">NP_057351</a> <a href="#">Entrez Gene 51442 Human</a> <a href="#">Q99990</a>



[View online »](#)

**Background:**

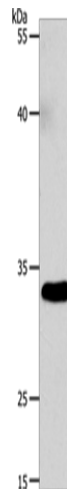
The protein encoded by this gene binds proteins of the TEA domain family of transcription factors (TEFs) through the Vg (vestigial) homology region found in its N-terminus. It may thus function as a specific coactivator for the mammalian TEFs. TDU interacted directly with the TEA domain family member; TEF1; and deletion of the Vg homology region abolished the interaction. The TDU-TEF1 dimer activated a reporter plasmid; and expression of TDU in *Drosophila* rescued loss of Vg function. The interaction was stronger in cardiac myocytes; suggesting a myocyte-specific factor may participate in the interaction. Vgll1 was weakly active in driving expression of a reporter gene from the mouse skeletal muscle alpha-actin promoter; and Vgll1 could partially reverse the inhibitory effect of TEF1 in this assay.

**Synonyms:**

TDU; VGL1

**Protein Families:**

Transcription Factors

**Product images:**

Gel: 10%SDS-PAGE

Lysate: 40 µg

Lane: 293T cells

Primary antibody: TA322329 (VGLL1 Antibody) at dilution 1/4600

Secondary antibody: Goat anti rabbit IgG at 1/8000 dilution

Exposure time: 45 seconds