

Product datasheet for **TA322328S**

PLEKHO1 Rabbit Polyclonal Antibody

Product data:

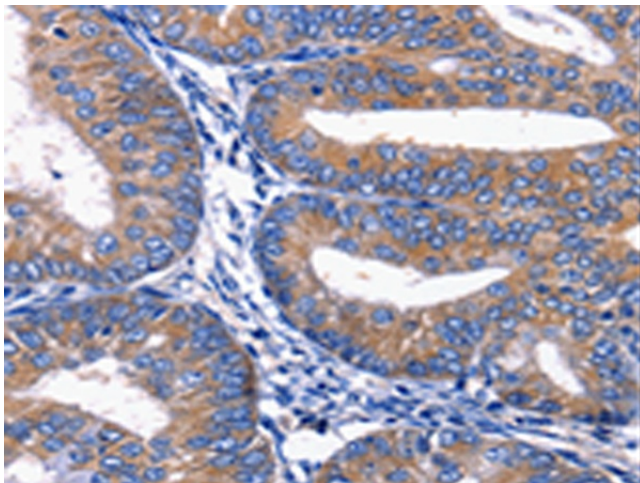
| | |
|-----------------------|--|
| Product Type: | Primary Antibodies |
| Applications: | IHC |
| Recommended Dilution: | IHC: 25-100 Positive control: Human cervical cancer Predicted cell location: Cytoplasm |
| Reactivity: | Human, Mouse, Rat |
| Host: | Rabbit |
| Isotype: | IgG |
| Clonality: | Polyclonal |
| Immunogen: | Synthetic peptide corresponding to a region derived from 20-32 amino acids of Human Pleckstrin homology domain-containing family O member 1 |
| Formulation: | PBS pH7.3, 0.05% NaN ₃ , 50% glycerol |
| Purification: | Antigen affinity purification |
| Conjugation: | Unconjugated |
| Storage: | Store at -20°C as received. |
| Stability: | Stable for 12 months from date of receipt. |
| Gene Name: | pleckstrin homology domain containing O1 |
| Database Link: | NP_057358 Entrez Gene 67220 Mouse Entrez Gene 310674 Rat Entrez Gene 51177 Human Q53GL0 |
| Background: | Pleckstrin homology domain-containing family O member 1 is a protein that in humans is encoded by the PLEKHO1 gene. PLEKHO1 has been shown to interact with Casein kinase 2; alpha 1 and SMURF1. It plays a role in the regulation of the actin cytoskeleton through its interactions with actin capping protein (CP). Appears to target ATM to the plasma membrane; and also inhibit tumor cell growth by inhibiting AKT-mediated cell-survival. The protein implicated in PI3K-regulated muscle differentiation; the regulation of AP-1 activity (plasma membrane bound AP-1 regulator that translocates to the nucleus) and the promotion of apoptosis induced by tumor necrosis factor TNF. When bound to PKB; it inhibits it probably by decreasing PKB level of phosphorylation. |



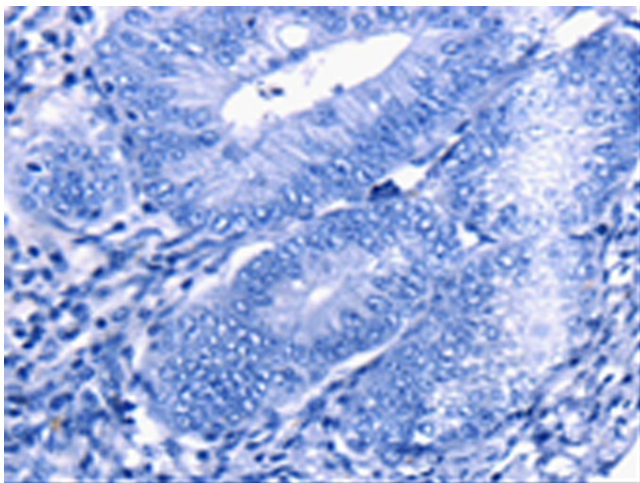
[View online »](#)

Synonyms: CKIP-1; CKIP1; JBP; OC120

Product images:



Immunohistochemistry of paraffin-embedded Human cervical cancer tissue using [TA322328] (PLEKHO1 Antibody) at dilution 1/20 (Original magnification: $\times 200$)



Immunohistochemistry of paraffin-embedded Human cervical cancer tissue using [TA322328] (PLEKHO1 Antibody) at dilution 1/20, treated with synthetic peptide. (Original magnification: $\times 200$)