

Product datasheet for **TA322328**

PLEKHO1 Rabbit Polyclonal Antibody

Product data:

Product Type:	Primary Antibodies
Applications:	IHC
Recommended Dilution:	IHC: 25-100 Positive control: Human cervical cancer Predicted cell location: Cytoplasm
Reactivity:	Human, Mouse, Rat
Host:	Rabbit
Isotype:	IgG
Clonality:	Polyclonal
Immunogen:	Synthetic peptide corresponding to a region derived from 20-32 amino acids of Human Pleckstrin homology domain-containing family O member 1
Formulation:	PBS pH7.3, 0.05% NaN ₃ , 50% glycerol
Concentration:	lot specific
Purification:	Antigen affinity purification
Conjugation:	Unconjugated
Storage:	Store at -20°C as received.
Stability:	Stable for 12 months from date of receipt.
Gene Name:	pleckstrin homology domain containing O1
Database Link:	NP_057358 Entrez Gene 67220 Mouse Entrez Gene 310674 Rat Entrez Gene 51177 Human Q53GL0

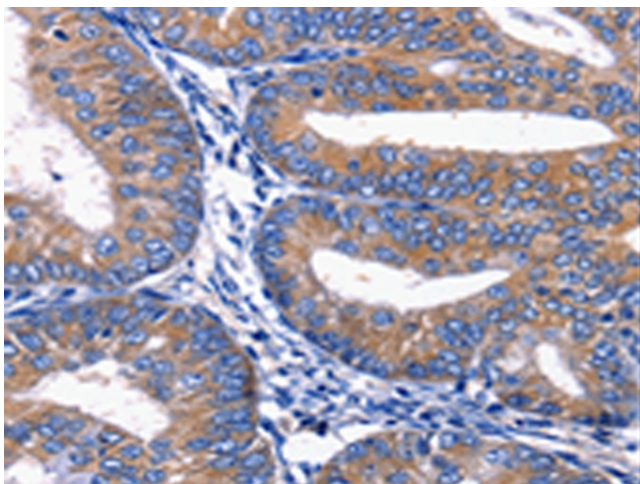
[View online »](#)

Background:

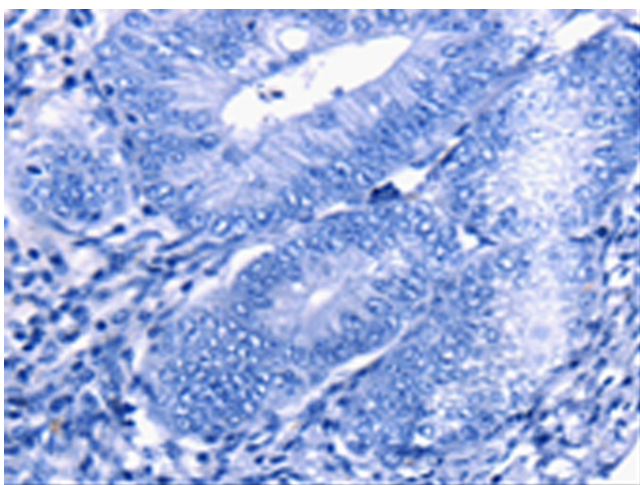
Pleckstrin homology domain-containing family O member 1 is a protein that in humans is encoded by the PLEKHO1 gene. PLEKHO1 has been shown to interact with Casein kinase 2; alpha 1 and SMURF1. It plays a role in the regulation of the actin cytoskeleton through its interactions with actin capping protein (CP). Appears to target ATM to the plasma membrane; and also inhibit tumor cell growth by inhibiting AKT-mediated cell-survival. The protein implicated in PI3K-regulated muscle differentiation; the regulation of AP-1 activity (plasma membrane bound AP-1 regulator that translocates to the nucleus) and the promotion of apoptosis induced by tumor necrosis factor TNF. When bound to PKB; it inhibits it probably by decreasing PKB level of phosphorylation.

Synonyms:

CKIP-1; CKIP1; JBP; OC120

Product images:


Immunohistochemistry of paraffin-embedded Human cervical cancer tissue using TA322328 (PLEKHO1 Antibody) at dilution 1/20 (Original magnification: ×200)



Immunohistochemistry of paraffin-embedded Human cervical cancer tissue using TA322328 (PLEKHO1 Antibody) at dilution 1/20, treated with synthetic peptide. (Original magnification: ×200)