

Product datasheet for **TA322327S**

WBP11 Rabbit Polyclonal Antibody

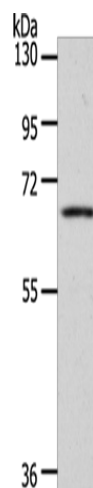
Product data:

Product Type:	Primary Antibodies
Applications:	WB
Recommended Dilution:	WB: 200-1000 WB positive control: Mouse kidney tissue
Reactivity:	Human, Mouse, Rat
Host:	Rabbit
Isotype:	IgG
Clonality:	Polyclonal
Immunogen:	Synthetic peptide corresponding to a region derived from 191-210 amino acids of human WW domain binding protein 11
Formulation:	PBS pH7.3, 0.05% NaN ₃ , 50% glycerol
Purification:	Antigen affinity purification
Conjugation:	Unconjugated
Storage:	Store at -20°C as received.
Stability:	Stable for 12 months from date of receipt.
Predicted Protein Size:	70 kDa
Gene Name:	WW domain binding protein 11
Database Link:	NP_057396 Entrez Gene 60321 Mouse Entrez Gene 297695 Rat Entrez Gene 51729 Human Q9Y2W2
Background:	This gene encodes a nuclear protein; which colocalizes with mRNA splicing factors and intermediate filament-containing perinuclear networks. This protein has 95% amino acid sequence identity to the mouse Wbp11 protein. It contains two proline-rich regions that bind to the WW domain of Npw38; a nuclear protein; and thus this protein is also called Npw38-binding protein NpwBP. The Npw38-NpwBP complex may function as a component of an mRNA factory in the nucleus.
Synonyms:	NPWBP; PPP1R165; SIPP1; WBP-11
Protein Pathways:	Spliceosome



[View online »](#)

Product images:



Gel: 10%SDS-PAGE
Lysate: 40 µg
Lane: Mouse kidney tissue
Primary antibody: [TA322327] (WBP11 Antibody) at dilution 1/100
Secondary antibody: Goat anti rabbit IgG at 1/8000 dilution
Exposure time: 20 seconds