

## Product datasheet for **TA322327**

### WBP11 Rabbit Polyclonal Antibody

#### Product data:

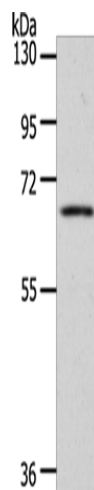
Product Type:	Primary Antibodies
Applications:	WB
Recommended Dilution:	WB: 200-1000 WB positive control: Mouse kidney tissue
Reactivity:	Human, Mouse, Rat
Host:	Rabbit
Isotype:	IgG
Clonality:	Polyclonal
Immunogen:	Synthetic peptide corresponding to a region derived from 191-210 amino acids of human WW domain binding protein 11
Formulation:	PBS pH7.3, 0.05% NaN <sub>3</sub> , 50% glycerol
Concentration:	lot specific
Purification:	Antigen affinity purification
Conjugation:	Unconjugated
Storage:	Store at -20°C as received.
Stability:	Stable for 12 months from date of receipt.
Predicted Protein Size:	70 kDa
Gene Name:	WW domain binding protein 11
Database Link:	<a href="#">NP_057396</a> <a href="#">Entrez Gene 60321 Mouse</a> <a href="#">Entrez Gene 297695 Rat</a> <a href="#">Entrez Gene 51729 Human</a> <a href="#">Q9Y2W2</a>
Background:	This gene encodes a nuclear protein; which colocalizes with mRNA splicing factors and intermediate filament-containing perinuclear networks. This protein has 95% amino acid sequence identity to the mouse Wbp11 protein. It contains two proline-rich regions that bind to the WW domain of Npw38; a nuclear protein; and thus this protein is also called Npw38-binding protein NpwBP. The Npw38-NpwBP complex may function as a component of an mRNA factory in the nucleus.
Synonyms:	NPWBP; PPP1R165; SIPP1; WBP-11



[View online »](#)

Protein Pathways: Spliceosome

### Product images:



Gel: 10%SDS-PAGE  
Lysate: 40  $\mu$ g  
Lane: Mouse kidney tissue  
Primary antibody: TA322327 (WBP11 Antibody)  
at dilution 1/100  
Secondary antibody: Goat anti rabbit IgG at  
1/8000 dilution  
Exposure time: 20 seconds