

## Product datasheet for **TA322326S**

### ATPase Inhibitory Factor 1 (ATPIF1) Rabbit Polyclonal Antibody

#### Product data:

Product Type:	Primary Antibodies
Applications:	IHC, WB
Recommended Dilution:	WB: 500-2000 WB positive control: K562 cell lysate IHC: 50-200 Positive control: Human colorectal cancer Predicted cell location: Cytoplasm
Reactivity:	Human
Host:	Rabbit
Isotype:	IgG
Clonality:	Polyclonal
Immunogen:	Fusion protein corresponding to a region derived from 26-106 amino acids of human ATPase inhibitory factor 1
Formulation:	PBS pH7.3, 0.05% NaN <sub>3</sub> , 50% glycerol
Purification:	Antigen affinity purification
Conjugation:	Unconjugated
Storage:	Store at -20°C as received.
Stability:	Stable for 12 months from date of receipt.
Predicted Protein Size:	12 kDa
Gene Name:	ATPase inhibitory factor 1
Database Link:	<a href="#">NP_057395</a> <a href="#">Entrez Gene 93974 Human</a> <a href="#">Q9UII2</a>



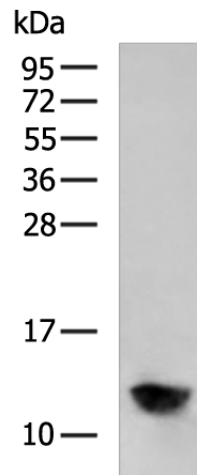
[View online »](#)

**Background:**

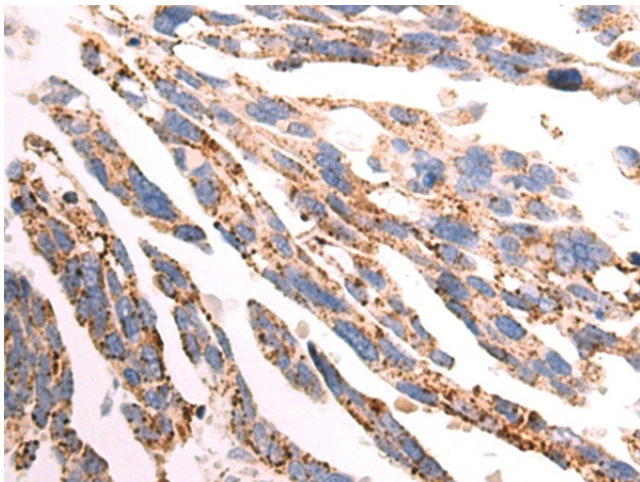
ATPase inhibitor; mitochondrial?is an?enzyme?that in humans is encoded by the?ATPIF1? gene. This gene encodes a mitochondrial ATPase inhibitor. Alternative splicing occurs at this locus and three transcript variants encoding distinct isoforms have been identified. It prevents ATPase from switching to ATP hydrolysis during collapse of the electrochemical gradient; for example during oxygen deprivation ATP synthase inhibitor forms a one to one complex with the F1 ATPase; possibly by binding at the alpha-beta interface. It is thought to inhibit ATP synthesis by preventing the release of ATP. The inhibitor has two oligomeric states; dimer (the active state) and tetramer.

**Synonyms:**

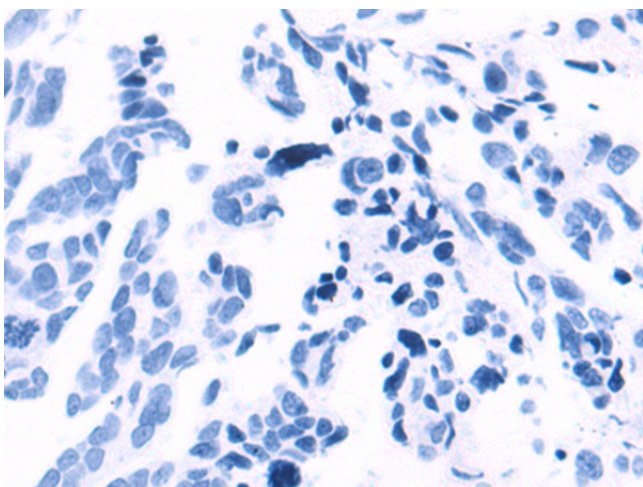
ATPI; ATPIP; IP

**Product images:**


Gel: 12%SDS-PAGE  
 Lysate: 40 µg  
 Lane: K562 cell lysate  
 Primary antibody: [TA322326] (ATP5IF1 Antibody) at dilution 1/550  
 Secondary antibody: Goat anti rabbit IgG at 1/5000 dilution  
 Exposure time: 90 seconds



Immunohistochemistry of paraffin-embedded Human colorectal cancer tissue using [TA322326] (ATP5IF1 Antibody) at dilution 1/85 (Original magnification: ×200)



Immunohistochemistry of paraffin-embedded Human colorectal cancer tissue using [TA322326] (ATP5IF1 Antibody) at dilution 1/85, treated with fusion protein. (Original magnification: ×200)