

## Product datasheet for **TA322325**

### ATPase Inhibitory Factor 1 (ATPIF1) Rabbit Polyclonal Antibody

#### Product data:

Product Type:	Primary Antibodies
Applications:	IHC, WB
Recommended Dilution:	WB: 1000-5000 WB positive control: HeLa, Jurkat, MCF7 and A431 cells IHC: 50-200 Positive control: Human thyroid cancer Predicted cell location: Cytoplasm
Reactivity:	Human
Host:	Rabbit
Isotype:	IgG
Clonality:	Polyclonal
Immunogen:	Fusion protein corresponding to a region derived from 26-106 amino acids of human ATPase inhibitory factor 1
Formulation:	PBS pH7.3, 0.05% NaN <sub>3</sub> , 50% glycerol
Concentration:	lot specific
Purification:	Antigen affinity purification
Conjugation:	Unconjugated
Storage:	Store at -20°C as received.
Stability:	Stable for 12 months from date of receipt.
Predicted Protein Size:	12 kDa
Gene Name:	ATPase inhibitory factor 1
Database Link:	<a href="#">NP_057395</a> <a href="#">Entrez Gene 93974 Human</a> <a href="#">Q9UII2</a>



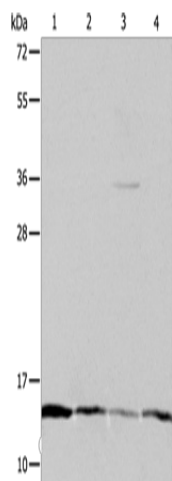
[View online »](#)

**Background:**

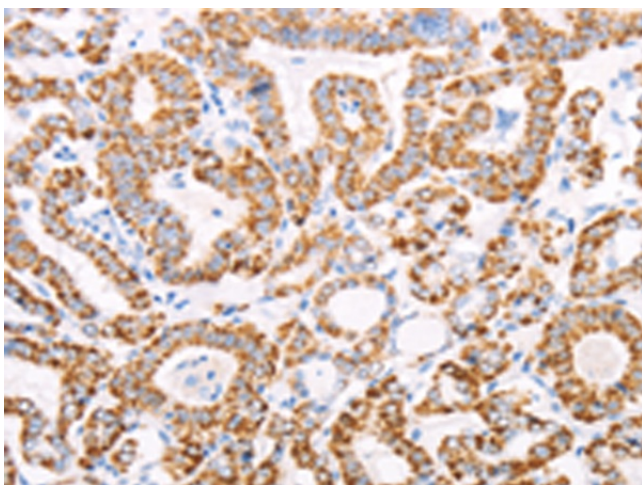
ATPase inhibitor; mitochondrial enzyme that in humans is encoded by the ATP5IF1 gene. This gene encodes a mitochondrial ATPase inhibitor. Alternative splicing occurs at this locus and three transcript variants encoding distinct isoforms have been identified. It prevents ATPase from switching to ATP hydrolysis during collapse of the electrochemical gradient; for example during oxygen deprivation ATP synthase inhibitor forms a one to one complex with the F1 ATPase; possibly by binding at the alpha-beta interface. It is thought to inhibit ATP synthesis by preventing the release of ATP. The inhibitor has two oligomeric states; dimer (the active state) and tetramer.

**Synonyms:**

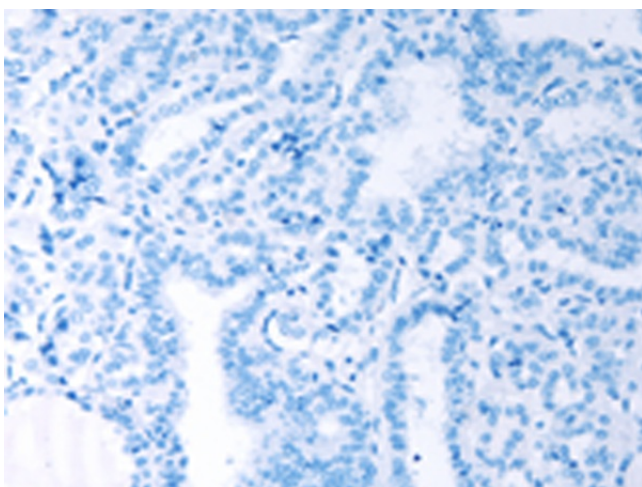
ATPI; ATPIP; IP

**Product images:**

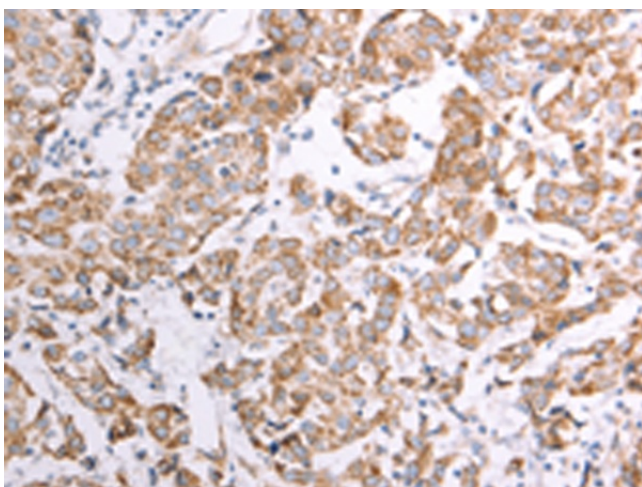
Gel: 10+12+15%SDS-PAGE  
Lysate: 40 µg  
Lane 1-4: HeLa cells  
Jurkat cells  
MCF7 cells  
A431 cells  
Primary antibody: TA322325 (ATP5IF1 Antibody)  
at dilution 1/1200  
Secondary antibody: Goat anti rabbit IgG at  
1/8000 dilution  
Exposure time: 2 minutes



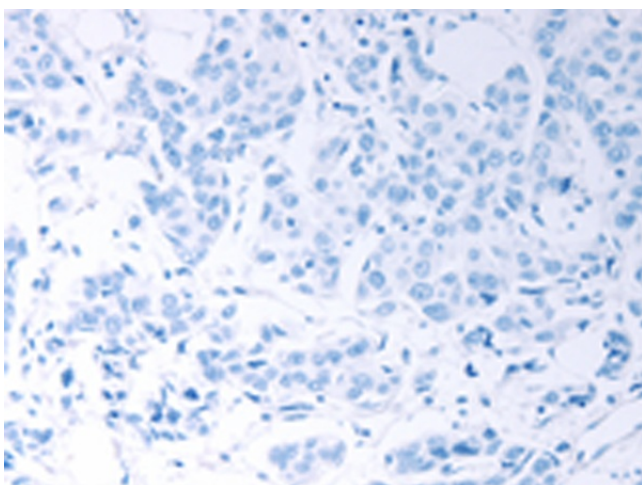
Immunohistochemistry of paraffin-embedded  
Human thyroid cancer tissue using TA322325  
(ATP5IF1 Antibody) at dilution 1/50 (Original  
magnification: ×200)



Immunohistochemistry of paraffin-embedded Human thyroid cancer tissue using TA322325 (ATP5IF1 Antibody) at dilution 1/50, treated with fusion protein. (Original magnification:  $\times 200$ )



Immunohistochemistry of paraffin-embedded Human breast cancer tissue using TA322325 (ATP5IF1 Antibody) at dilution 1/50 (Original magnification:  $\times 200$ )



Immunohistochemistry of paraffin-embedded Human breast cancer tissue using TA322325 (ATP5IF1 Antibody) at dilution 1/50, treated with fusion protein. (Original magnification:  $\times 200$ )