

Product datasheet for **TA322324**

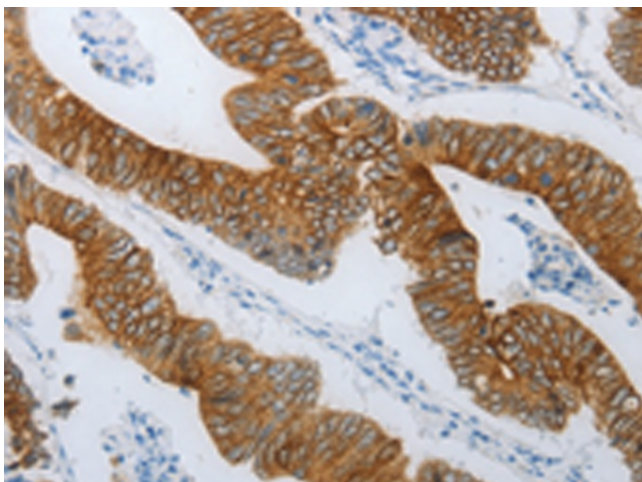
C9orf127 (TMEM8B) Rabbit Polyclonal Antibody

Product data:

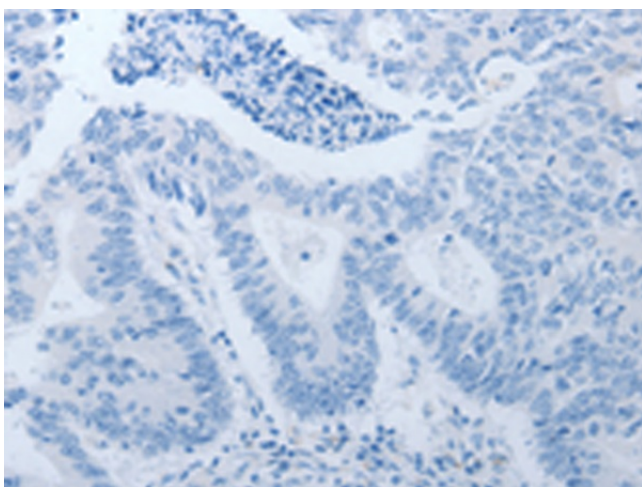
Product Type:	Primary Antibodies
Applications:	IHC
Recommended Dilution:	IHC: 25-100 Positive control: Human colon cancer Predicted cell location: Cytoplasm, Cell membrane
Reactivity:	Human, Mouse
Host:	Rabbit
Isotype:	IgG
Clonality:	Polyclonal
Immunogen:	Synthetic peptide corresponding to a region derived from 221-233 amino acids of Human transmembrane protein 8B
Formulation:	PBS pH7.3, 0.05% NaN ₃ , 50% glycerol
Concentration:	lot specific
Purification:	Antigen affinity purification
Conjugation:	Unconjugated
Storage:	Store at -20°C as received.
Stability:	Stable for 12 months from date of receipt.
Gene Name:	transmembrane protein 8B
Database Link:	NP_057530 Entrez Gene 242409 Mouse Entrez Gene 51754 Human A6NDV4
Background:	May function as a regulator of the EGFR pathway. Probable tumor suppressor which may function in cell growth; proliferation and adhesion.
Synonyms:	C9orf127; NAG-5; NAG5; NGX6
Protein Families:	Transmembrane



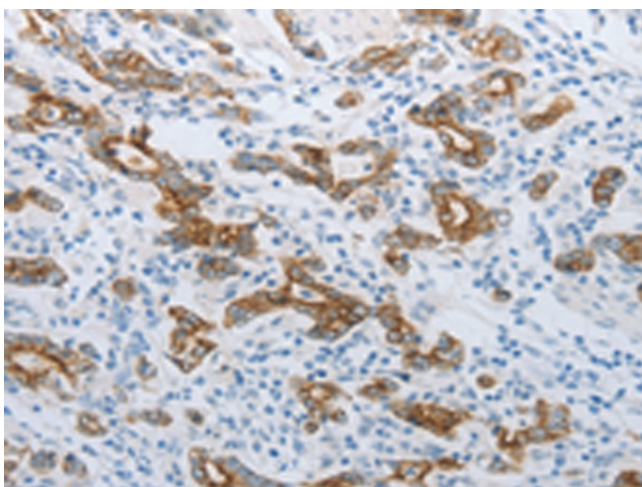
[View online »](#)

Product images:

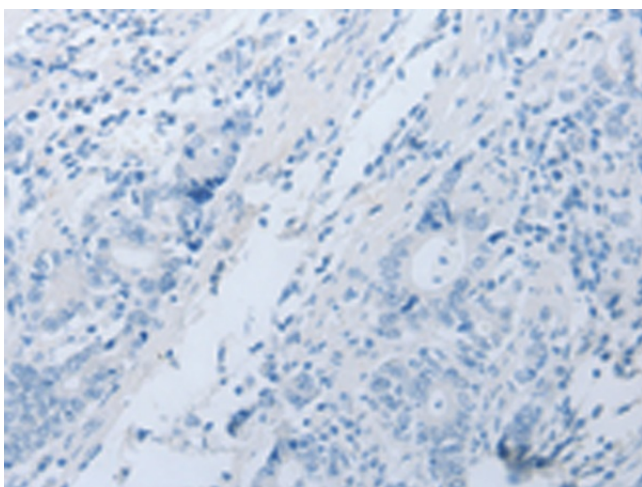
Immunohistochemistry of paraffin-embedded Human colon cancer tissue using TA322324 (TMEM8B Antibody) at dilution 1/15 (Original magnification: $\times 200$)



Immunohistochemistry of paraffin-embedded Human colon cancer tissue using TA322324 (TMEM8B Antibody) at dilution 1/15, treated with synthetic peptide. (Original magnification: $\times 200$)



Immunohistochemistry of paraffin-embedded Human gastric cancer tissue using TA322324 (TMEM8B Antibody) at dilution 1/15 (Original magnification: $\times 200$)



Immunohistochemistry of paraffin-embedded Human gastric cancer tissue using TA322324 (TMEM8B Antibody) at dilution 1/15, treated with synthetic peptide. (Original magnification: $\times 200$)