

Product datasheet for **TA322323**

CLEC1 (CLEC1A) Rabbit Polyclonal Antibody

Product data:

Product Type:	Primary Antibodies
Applications:	IHC
Recommended Dilution:	IHC: 50-200 Positive control: Human liver cancer Predicted cell location: Cell membrane
Reactivity:	Human
Host:	Rabbit
Isotype:	IgG
Clonality:	Polyclonal
Immunogen:	Fusion protein corresponding to a region derived from 144-258 amino acids of human C-type lectin domain family 1, member A
Formulation:	PBS pH7.3, 0.05% NaN ₃ , 50% glycerol
Concentration:	lot specific
Purification:	Antigen affinity purification
Conjugation:	Unconjugated
Storage:	Store at -20°C as received.
Stability:	Stable for 12 months from date of receipt.
Predicted Protein Size:	32 kDa
Gene Name:	C-type lectin domain family 1 member A
Database Link:	NP_057595 Entrez Gene 51267 Human Q8NC01



[View online »](#)

Background:

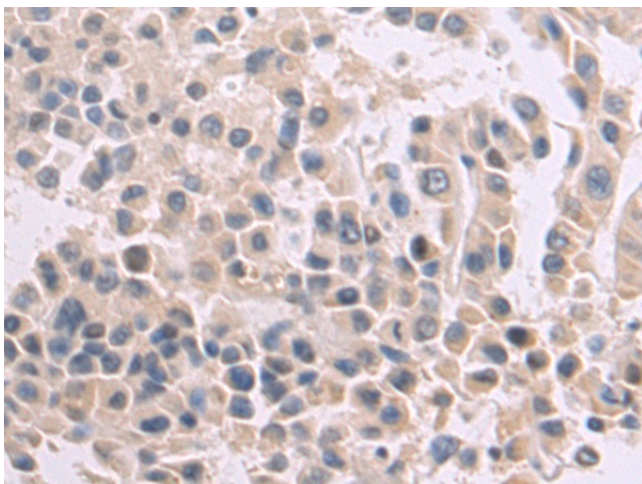
This gene encodes a member of the C-type lectin/C-type lectin-like domain (CTL/CTLD) superfamily. Members of this family share a common protein fold and have diverse functions; such as cell adhesion; cell-cell signalling; glycoprotein turnover; and roles in inflammation and immune response. The encoded protein may play a role in regulating dendritic cell function. Alternative splice variants have been described but their biological nature has not been determined. This gene is closely linked to other CTL/CTLD superfamily members on chromosome 12p13 in the natural killer gene complex region.

Synonyms:

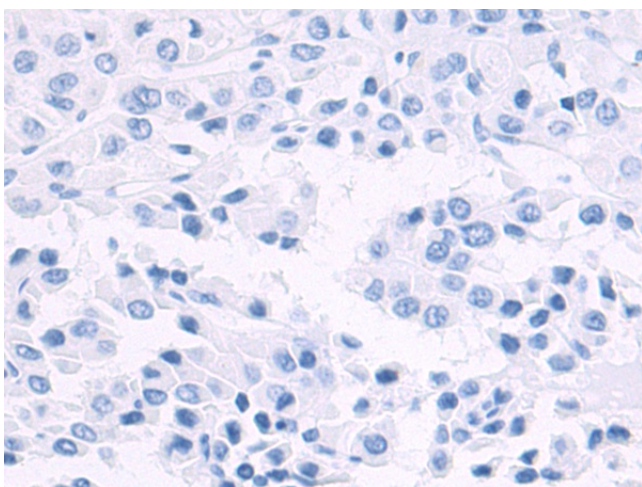
CLEC-1; CLEC1

Protein Families:

Druggable Genome, Transmembrane

Product images:

Immunohistochemistry of paraffin-embedded Human liver cancer tissue using TA322323 (CLEC1A Antibody) at dilution 1/80 (Original magnification: $\times 200$)



Immunohistochemistry of paraffin-embedded Human liver cancer tissue using TA322323 (CLEC1A Antibody) at dilution 1/80, treated with fusion protein. (Original magnification: $\times 200$)