

## Product datasheet for **TA322319S**

### TLR7 Rabbit Polyclonal Antibody

#### Product data:

Product Type:	Primary Antibodies
Applications:	IHC
Recommended Dilution:	IHC: 10-50 Positive control: Human tonsil Predicted cell location: Cytoplasm, Cell membrane
Reactivity:	Human, Mouse
Host:	Rabbit
Isotype:	IgG
Clonality:	Polyclonal
Immunogen:	Fusion protein corresponding to a region derived from 62-348 amino acids of Human Toll-like receptor 7
Formulation:	PBS pH7.3, 0.05% NaN <sub>3</sub> , 50% glycerol
Purification:	Antigen affinity purification
Conjugation:	Unconjugated
Storage:	Store at -20°C as received.
Stability:	Stable for 12 months from date of receipt.
Gene Name:	toll like receptor 7
Database Link:	<a href="#">NP_057646</a> <a href="#">Entrez Gene 170743 Mouse</a> <a href="#">Entrez Gene 51284 Human</a> <a href="#">Q9NYK1</a>

**Background:** The protein encoded by this gene is a member of the Toll-like receptor (TLR) family which plays a fundamental role in pathogen recognition and activation of innate immunity. TLRs are highly conserved from Drosophila to humans and share structural and functional similarities. They recognize pathogen-associated molecular patterns (PAMPs) that are expressed on infectious agents; and mediate the production of cytokines necessary for the development of effective immunity. The various TLRs exhibit different patterns of expression. This gene is predominantly expressed in lung; placenta; and spleen; and lies in close proximity to another family member; TLR8; on chromosome X.



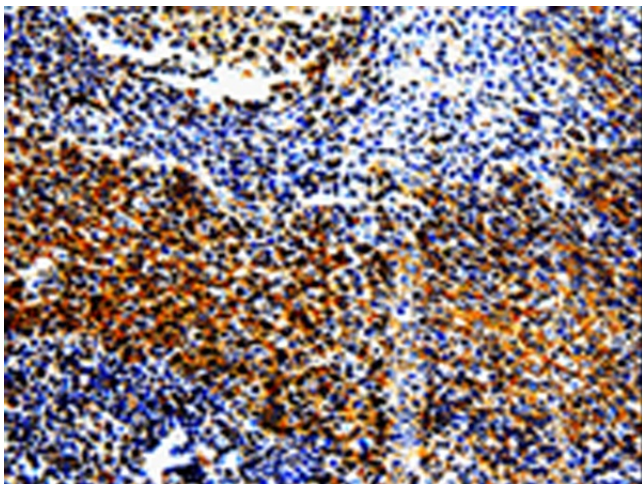
[View online »](#)

**Synonyms:** TLR7-like

**Protein Families:** Druggable Genome, Transmembrane

**Protein Pathways:** Toll-like receptor signaling pathway

**Product images:**



Immunohistochemistry of paraffin-embedded Human tonsil tissue using [TA322319] (TLR7 Antibody) at dilution 1/10. (Original magnification:  $\times 200$ )