

Product datasheet for **TA322318**

TLR7 Rabbit Polyclonal Antibody

Product data:

Product Type:	Primary Antibodies
Applications:	IHC
Recommended Dilution:	IHC: 10-50 Positive control: Human tonsil Predicted cell location: Cytoplasm
Reactivity:	Human, Mouse
Host:	Rabbit
Isotype:	IgG
Clonality:	Polyclonal
Immunogen:	Fusion protein corresponding to a region derived from 62-348 amino acids of Human Toll-like receptor 7
Formulation:	PBS pH7.3, 0.05% NaN ₃ , 50% glycerol
Concentration:	lot specific
Purification:	Antigen affinity purification
Conjugation:	Unconjugated
Storage:	Store at -20°C as received.
Stability:	Stable for 12 months from date of receipt.
Gene Name:	toll like receptor 7
Database Link:	NP_057646 Entrez Gene 170743 Mouse Entrez Gene 51284 Human Q9NYK1



[View online »](#)

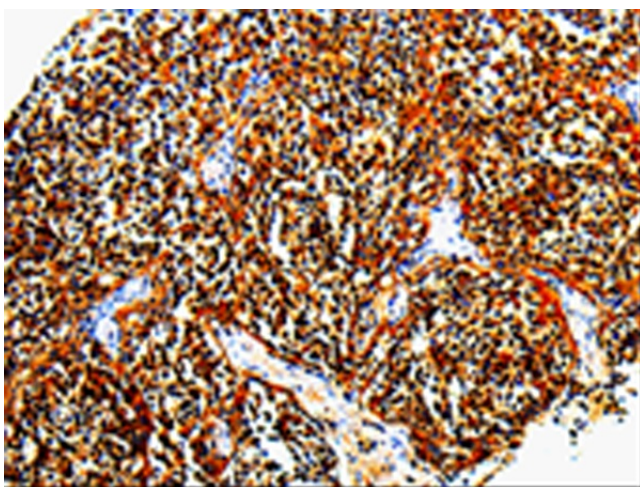
Background: The protein encoded by this gene is a member of the Toll-like receptor (TLR) family which plays a fundamental role in pathogen recognition and activation of innate immunity. TLRs are highly conserved from *Drosophila* to humans and share structural and functional similarities. They recognize pathogen-associated molecular patterns (PAMPs) that are expressed on infectious agents; and mediate the production of cytokines necessary for the development of effective immunity. The various TLRs exhibit different patterns of expression. This gene is predominantly expressed in lung; placenta; and spleen; and lies in close proximity to another family member; TLR8; on chromosome X.

Synonyms: TLR7-like

Protein Families: Druggable Genome, Transmembrane

Protein Pathways: Toll-like receptor signaling pathway

Product images:



Immunohistochemistry of paraffin-embedded Human tonsil tissue using TA322318 (TLR7 Antibody) at dilution 1/10. (Original magnification: $\times 200$)