

## Product datasheet for **TA322316**

### FZD3 Rabbit Polyclonal Antibody

#### Product data:

|                       |  |
|-----------------------|--|
| Product Type:         | Primary Antibodies   |
| Applications:         | IHC  |
| Recommended Dilution: | IHC: 15-50<br>Positive control: Human cervical cancer<br>Predicted cell location: Cytoplasm  |
| Reactivity:           | Human, Mouse   |
| Host:                 | Rabbit   |
| Isotype:              | IgG  |
| Clonality:            | Polyclonal   |
| Immunogen:            | Synthetic peptide corresponding to a region derived from 133-147 amino acids of human frizzled family receptor 3   |
| Formulation:          | PBS pH7.3, 0.05% NaN <sub>3</sub> , 50% glycerol   |
| Concentration:        | lot specific   |
| Purification:         | Antigen affinity purification  |
| Conjugation:          | Unconjugated   |
| Storage:              | Store at -20°C as received.  |
| Stability:            | Stable for 12 months from date of receipt.   |
| Gene Name:            | frizzled class receptor 3  |
| Database Link:        | <a href="#">NP_059108</a><br><a href="#">Entrez Gene 14365 Mouse</a> <a href="#">Entrez Gene 7976 Human</a><br><a href="#">Q9NPG1</a>  |
| Background:           | This gene is a member of the frizzled gene family. Members of this family encode seven-transmembrane domain proteins that are receptors for the wingless type MMTV integration site family of signaling proteins. Most frizzled receptors are coupled to the beta-catenin canonical signaling pathway. The function of this protein is unknown; although it may play a role in mammalian hair follicle development. Alternative splicing results in multiple transcript variants. This gene is a susceptibility locus for schizophrenia. |
| Synonyms:             | Fz-3   |

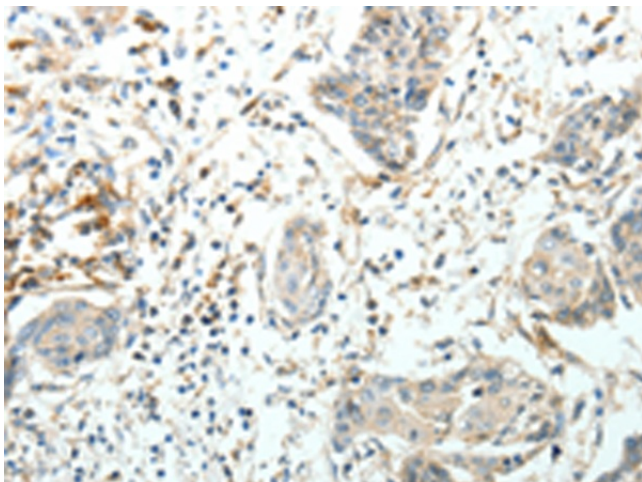


[View online »](#)

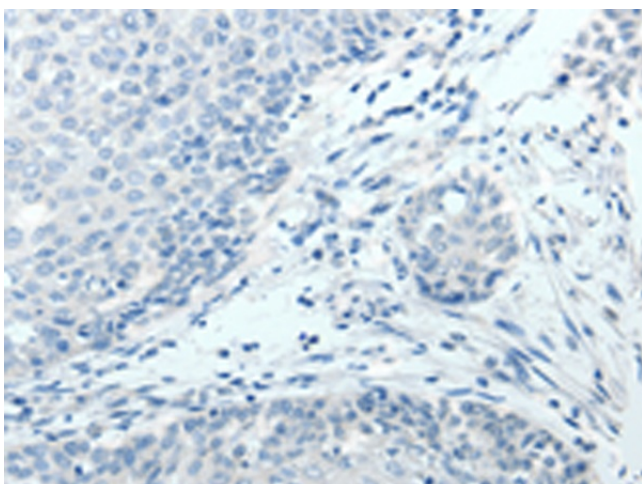
**Protein Families:** Druggable Genome, GPCR, Transmembrane

**Protein Pathways:** Basal cell carcinoma, Colorectal cancer, Melanogenesis, Pathways in cancer, Wnt signaling pathway

**Product images:**



Immunohistochemistry of paraffin-embedded Human cervical cancer tissue using TA322316 (FZD3 Antibody) at dilution 1/20 (Original magnification:  $\times 200$ )



Immunohistochemistry of paraffin-embedded Human cervical cancer tissue using TA322316 (FZD3 Antibody) at dilution 1/20, treated with synthetic peptide. (Original magnification:  $\times 200$ )