

Product datasheet for **TA322313**

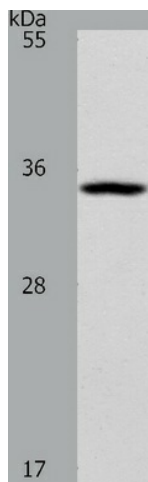
BUD23 Rabbit Polyclonal Antibody

Product data:

Product Type:	Primary Antibodies
Applications:	WB
Recommended Dilution:	WB: 1:200-1000
Reactivity:	Human, Mouse, Rat
Host:	Rabbit
Isotype:	IgG
Clonality:	Polyclonal
Immunogen:	Synthetic peptide corresponding to a region derived from 263-281 amino acids of human Williams Beuren syndrome chromosome region 22
Formulation:	PBS pH7.3, 0.05% NaN ₃ , 50% glycerol
Concentration:	lot specific
Purification:	Antigen affinity purification
Storage:	Store at -20°C as received.
Stability:	Stable for 12 months from date of receipt.
Predicted Protein Size:	32 kDa
Gene Name:	Williams-Beuren syndrome chromosome region 22
Database Link:	NP_059998 Entrez Gene 66138 MouseEntrez Gene 368084 RatEntrez Gene 114049 Human
Background:	This gene encodes a protein containing a nuclear localization signal and an S-adenosyl-L-methionine binding motif typical of methyltransferases; suggesting that the encoded protein may act on DNA methylation. This gene is deleted in Williams syndrome; a multisystem developmental disorder caused by the deletion of contiguous genes at 7q11.23. Alternatively spliced transcript variants have been found.
Synonyms:	HASJ4442; HUSSY-3; MERM1; PP3381; WBMT
Protein Families:	Druggable Genome
Protein Pathways:	Androgen and estrogen metabolism, Histidine metabolism, Selenoamino acid metabolism, Tyrosine metabolism



[View online »](#)

Product images:

Predicted band size: 32 kDa. Positive control: K562 cell lysate. Recommended dilution: 1/200-1000. (Gel: 10%SDS-PAGE Lysate: 40 ug per lane Primary antibody: 1/100 dilution Secondary antibody: Goat anti Rabbit IgG - H&L (HRP) at 1/10000 dilution Exposure time: 30 seconds)