

## Product datasheet for **TA322312**

### IL17RD Rabbit Polyclonal Antibody

#### Product data:

Product Type:	Primary Antibodies
Applications:	IHC, WB
Recommended Dilution:	WB: 500-2000 WB positive control: A172 and 231 cell lysates IHC: 50-100 Positive control: Human cervical cancer Predicted cell location: Cytoplasm
Reactivity:	Human, Mouse
Host:	Rabbit
Isotype:	IgG
Clonality:	Polyclonal
Immunogen:	Fusion protein corresponding to a region derived from 322-671 amino acids of Human Interleukin-17 receptor D
Formulation:	PBS pH7.3, 0.05% NaN <sub>3</sub> , 50% glycerol
Concentration:	lot specific
Purification:	Antigen affinity purification
Conjugation:	Unconjugated
Storage:	Store at -20°C as received.
Stability:	Stable for 12 months from date of receipt.
Gene Name:	interleukin 17 receptor D
Database Link:	<a href="#">NP_060033</a> <a href="#">Entrez Gene 171463 Mouse</a> <a href="#">Entrez Gene 54756 Human</a> <a href="#">Q8NFM7</a>
Background:	This gene encodes a membrane protein belonging to the interleukin-17 receptor (IL-17R) protein family. The encoded protein is a component of the interleukin-17 receptor signaling complex; and the interaction between this protein and IL-17R does not require the interleukin (PMID: 19079364). The gene product also affects fibroblast growth factor signaling; inhibiting or stimulating growth through MAPK/ERK signaling.

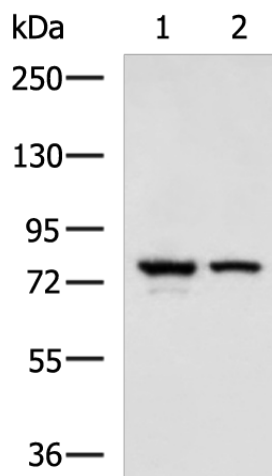


[View online »](#)

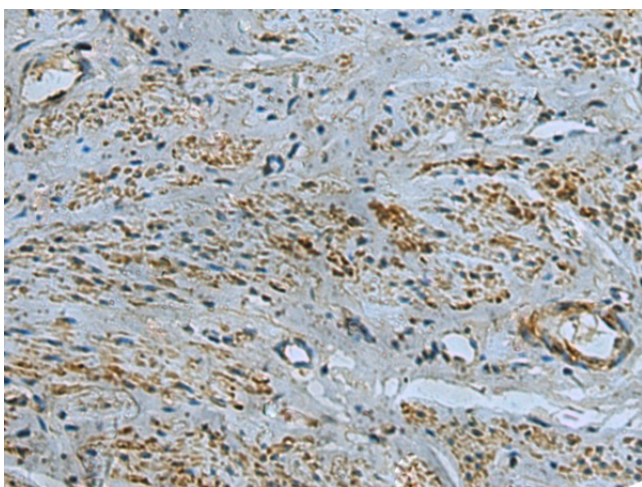
**Synonyms:** HH18; IL-17RD; IL17RLM; SEF

**Protein Families:** Druggable Genome

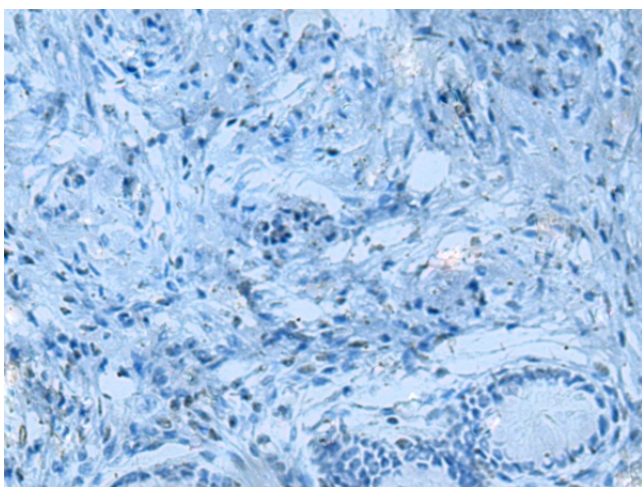
**Product images:**



Gel: 6%SDS-PAGE  
Lysate: 40 µg  
Lane 1-2: A172 and 231 cell lysates  
Primary antibody: TA322312 (IL17RD Antibody) at dilution 1/900  
Secondary antibody: Goat anti rabbit IgG at 1/5000 dilution  
Exposure time: 5 seconds



Immunohistochemistry of paraffin-embedded Human cervical cancer tissue using TA322312 (IL17RD Antibody) at dilution 1/40 (Original magnification: ×200)



Immunohistochemistry of paraffin-embedded Human cervical cancer tissue using TA322312 (IL17RD Antibody) at dilution 1/40, treated with fusion protein. (Original magnification: ×200)