

## Product datasheet for **TA322310**

### Cyclin M3 (CNNM3) Rabbit Polyclonal Antibody

#### Product data:

|                         |  |
|-------------------------|--|
| Product Type:           | Primary Antibodies   |
| Applications:           | IHC, WB  |
| Recommended Dilution:   | WB: 200-1000<br>WB positive control: Mouse liver tissue<br>IHC: 25-100<br>Positive control: Human ovarian cancer<br>Predicted cell location: Cytoplasm |
| Reactivity:             | Human, Mouse   |
| Host:                   | Rabbit   |
| Isotype:                | IgG  |
| Clonality:              | Polyclonal   |
| Immunogen:              | Fusion protein corresponding to C terminal 300 amino acids of human cyclin M3  |
| Formulation:            | PBS pH7.3, 0.05% NaN <sub>3</sub> , 50% glycerol   |
| Concentration:          | lot specific   |
| Purification:           | Antigen affinity purification  |
| Conjugation:            | Unconjugated   |
| Storage:                | Store at -20°C as received.  |
| Stability:              | Stable for 12 months from date of receipt.   |
| Predicted Protein Size: | 76 kDa   |
| Gene Name:              | cyclin and CBS domain divalent metal cation transport mediator 3   |
| Database Link:          | <a href="#">NP_060093</a><br><a href="#">Entrez Gene 94218 Mouse</a> <a href="#">Entrez Gene 26505 Human</a><br><a href="#">Q8NE01</a>                 |



[View online »](#)

**Background:**

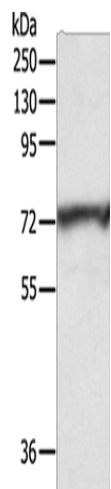
The ACDP3 gene; designated CNNM3 by the HUGO Nomenclature Committee; encodes a deduced 707-amino acid protein. Northern blot analysis revealed ubiquitous expression of CNNM3. Immunofluorescence studies showed that all 4 CNNM proteins are predominantly localized in the nucleus. Acdp3 contains 4 transmembrane domains; 2 CBS domains; a DUF21 domain; and a cNMP-binding domain. It also has large alanine- and leucine-rich regions. Northern blot analysis detected variable Acdp3 expression in all mouse tissues examined; with highest expression in brain; kidney; liver; and heart.

**Synonyms:**

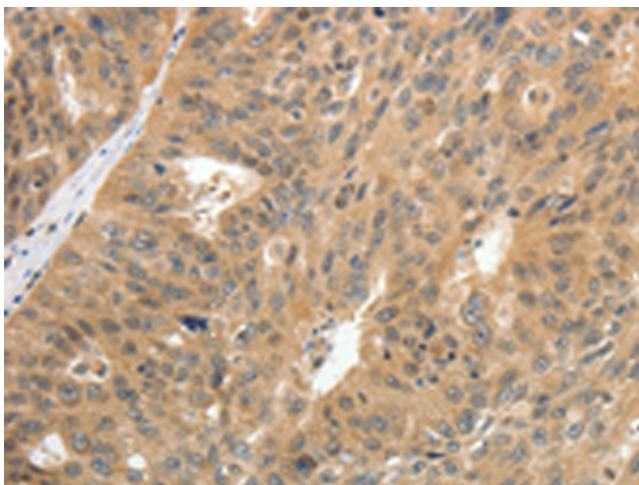
ACDP3

**Protein Families:**

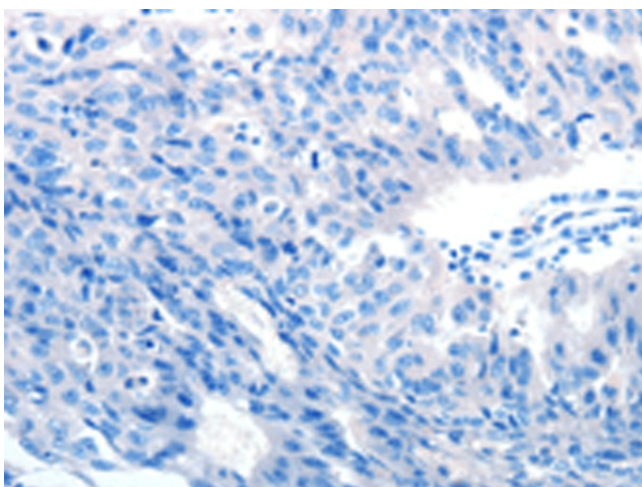
Transcription Factors, Transmembrane

**Product images:**


Gel: 10%SDS-PAGE  
 Lysate: 40 µg  
 Lane: Mouse liver tissue  
 Primary antibody: TA322310 (CNNM3 Antibody) at dilution 1/400  
 Secondary antibody: Goat anti rabbit IgG at 1/8000 dilution  
 Exposure time: 30 seconds



Immunohistochemistry of paraffin-embedded Human ovarian cancer tissue using TA322310 (CNNM3 Antibody) at dilution 1/25 (Original magnification: ×200)



Immunohistochemistry of paraffin-embedded Human ovarian cancer tissue using TA322310 (CNNM3 Antibody) at dilution 1/25, treated with fusion protein. (Original magnification: ×200)