

## Product datasheet for **TA322307S**

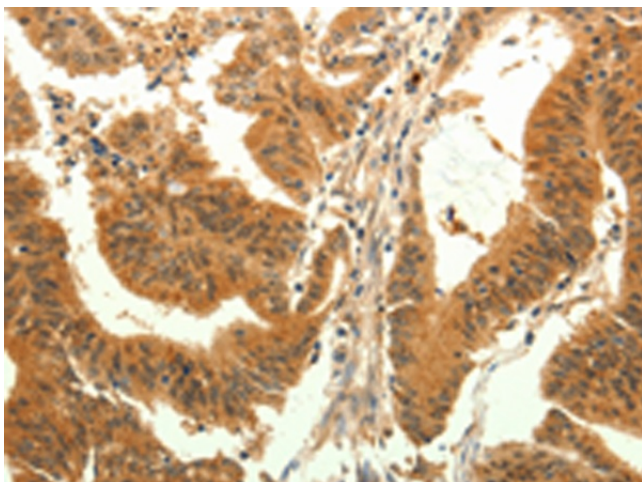
### TRPM7 Rabbit Polyclonal Antibody

#### Product data:

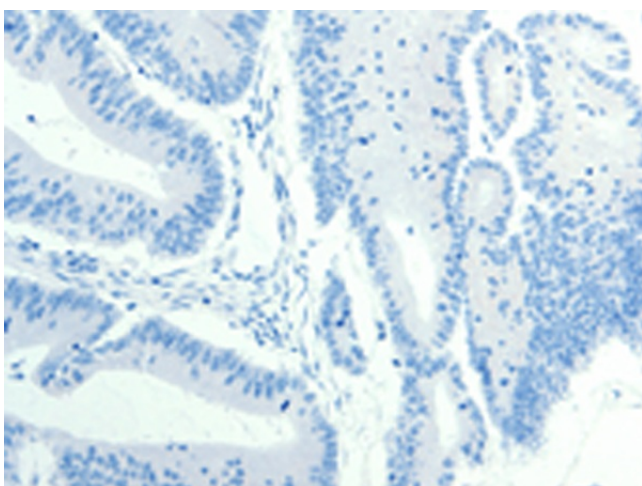
Product Type:	Primary Antibodies
Applications:	IHC
Recommended Dilution:	IHC: 50-200 Positive control: Human colon cancer Predicted cell location: Cytoplasm
Reactivity:	Human, Mouse, Rat
Host:	Rabbit
Isotype:	IgG
Clonality:	Polyclonal
Immunogen:	Synthetic peptide corresponding to a region derived from 1850-1863 amino acids of human transient receptor potential cation channel, subfamily M, member 7
Formulation:	PBS pH7.3, 0.05% NaN <sub>3</sub> , 50% glycerol
Purification:	Antigen affinity purification
Conjugation:	Unconjugated
Storage:	Store at -20°C as received.
Stability:	Stable for 12 months from date of receipt.
Gene Name:	transient receptor potential cation channel subfamily M member 7
Database Link:	<a href="#">NP_060142</a> <a href="#">Entrez Gene 58800 Mouse</a> <a href="#">Entrez Gene 679906 Rat</a> <a href="#">Entrez Gene 54822 Human</a> <a href="#">Q96QT4</a>
Background:	The protein encoded by this gene is both an ion channel and a serine/threonine protein kinase. The kinase activity is essential for the ion channel function; which serves to increase intracellular calcium levels and to help regulate magnesium ion homeostasis. Defects in this gene are a cause of amyotrophic lateral sclerosis-parkinsonism/dementia complex of Guam.
Synonyms:	ALSPDC; CHAK; CHAK1; LTrpC-7; LTRPC7; TRP-PLIK
Protein Families:	Druggable Genome, Ion Channels: Transient receptor potential, Protein Kinase, Transmembrane



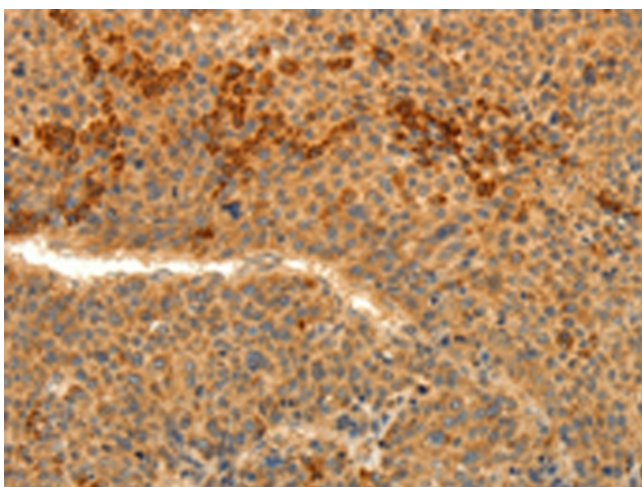
[View online »](#)

**Product images:**

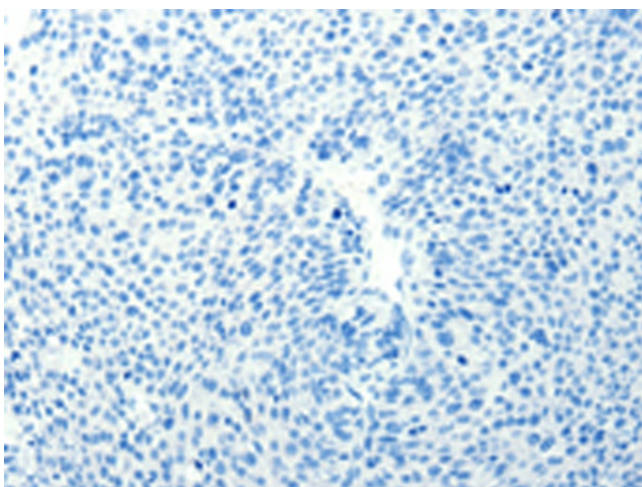
Immunohistochemistry of paraffin-embedded Human colon cancer tissue using [TA322307] (TRPM7 Antibody) at dilution 1/30 (Original magnification:  $\times 200$ )



Immunohistochemistry of paraffin-embedded Human colon cancer tissue using [TA322307] (TRPM7 Antibody) at dilution 1/30, treated with synthetic peptide. (Original magnification:  $\times 200$ )



Immunohistochemistry of paraffin-embedded Human liver cancer tissue using [TA322307] (TRPM7 Antibody) at dilution 1/30 (Original magnification:  $\times 200$ )



Immunohistochemistry of paraffin-embedded Human liver cancer tissue using [TA322307] (TRPM7 Antibody) at dilution 1/30, treated with synthetic peptide. (Original magnification:  $\times 200$ )