

Product datasheet for **TA322305**

Spindly (SPDL1) Rabbit Polyclonal Antibody

Product data:

Product Type:	Primary Antibodies
Applications:	IHC, WB
Recommended Dilution:	WB: 500-2000 WB positive control: HeLa, 293T, Jurkat cell, Mouse testis tissue, K562, A549 cell lysates IHC: 50-200 Positive control: Human thyroid cancer Predicted cell location: Nucleus
Reactivity:	Human, Mouse
Host:	Rabbit
Isotype:	IgG
Clonality:	Polyclonal
Immunogen:	Fusion protein corresponding to C terminal 250 amino acids of human spindle apparatus coiled-coil protein 1
Formulation:	PBS pH7.3, 0.05% NaN ₃ , 50% glycerol
Concentration:	lot specific
Purification:	Antigen affinity purification
Conjugation:	Unconjugated
Storage:	Store at -20°C as received.
Stability:	Stable for 12 months from date of receipt.
Gene Name:	spindle apparatus coiled-coil protein 1
Database Link:	NP_060255 Entrez Gene 70385 Mouse Entrez Gene 54908 Human Q96EA4



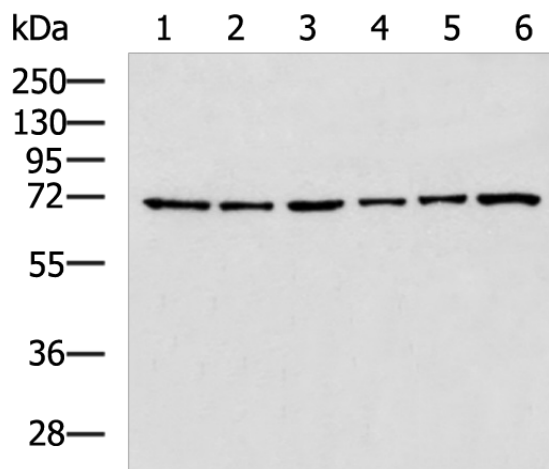
[View online »](#)

Background:

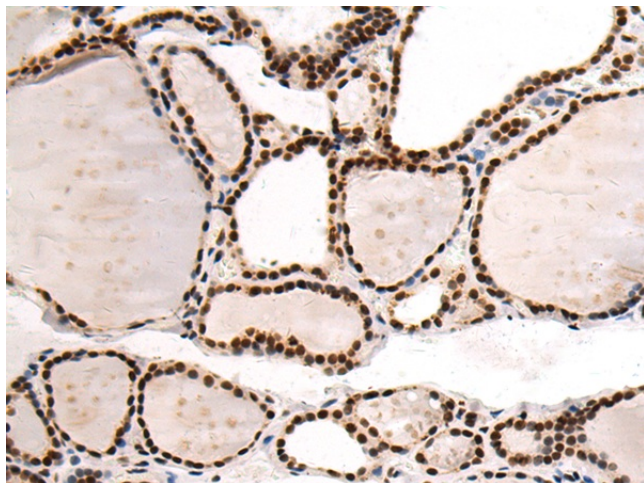
Required for the localization of dynein and dynactin to the mitotic kintochore. Dynein is believed to control the initial lateral interaction between the kinetochore and spindle microtubules and to facilitate the subsequent formation of end-on kinetochore-microtubule attachments mediated by the NDC80 complex. Also required for correct spindle orientation. Does not appear to be required for the removal of spindle assembly checkpoint (SAC) proteins from the kinetochore upon bipolar spindle attachment. Interacts with KNTC1 and ZW10. These interactions appear weak and may be transient or indirect.

Synonyms:

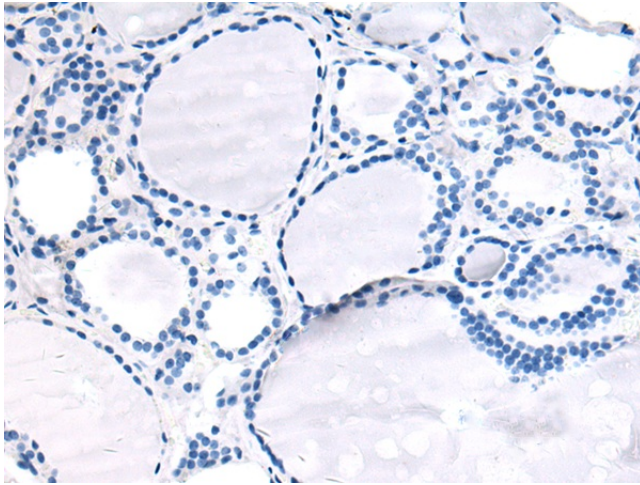
CCDC99

Product images:


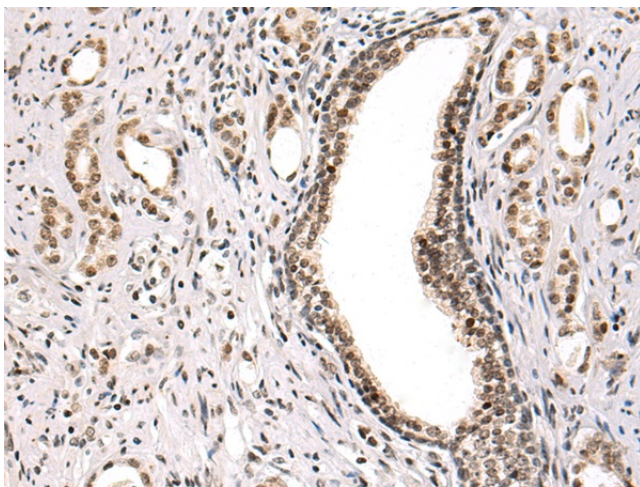
Gel: 8%SDS-PAGE
 Lysate: 40 µg
 Lane 1-6: HeLa
 293T
 Jurkat cell
 Mouse testis tissue
 K562
 A549 cell lysates
 Primary antibody: TA322305 (SPDL1 Antibody) at dilution 1/700
 Secondary antibody: Goat anti rabbit IgG at 1/5000 dilution
 Exposure time: 1 minute



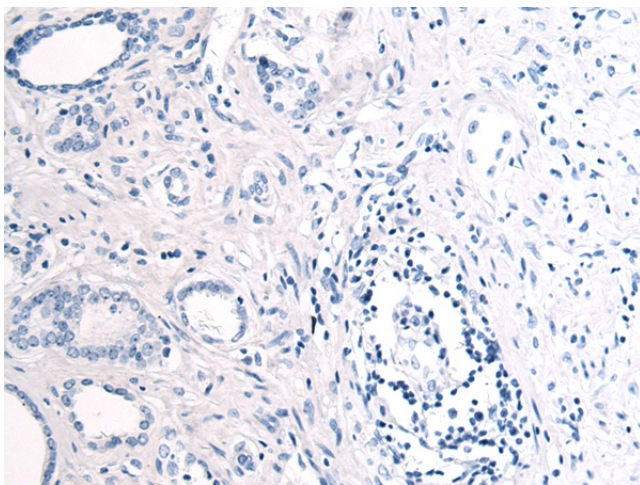
Immunohistochemistry of paraffin-embedded Human thyroid cancer tissue using TA322305 (SPDL1 Antibody) at dilution 1/100 (Original magnification: ×200)



Immunohistochemistry of paraffin-embedded Human thyroid cancer tissue using TA322305 (SPDL1 Antibody) at dilution 1/100, treated with fusion protein. (Original magnification: ×200)



Immunohistochemistry of paraffin-embedded Human prostate cancer tissue using TA322305 (SPDL1 Antibody) at dilution 1/100 (Original magnification: ×200)



Immunohistochemistry of paraffin-embedded Human prostate cancer tissue using TA322305 (SPDL1 Antibody) at dilution 1/100, treated with fusion protein. (Original magnification: ×200)