

Product datasheet for **TA322304**

CMTM6 Rabbit Polyclonal Antibody

Product data:

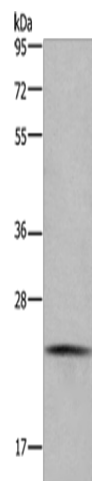
Product Type:	Primary Antibodies
Applications:	IHC, WB
Recommended Dilution:	WB: 200-1000 WB positive control: Raji cells IHC: 50-200 Positive control: Human thyroid cancer Predicted cell location: Cytoplasm
Reactivity:	Human
Host:	Rabbit
Isotype:	IgG
Clonality:	Polyclonal
Immunogen:	Synthetic peptide corresponding to a region derived from 170-182 amino acids of Human CKLF-like MARVEL transmembrane domain containing 6
Formulation:	PBS pH7.3, 0.05% NaN ₃ , 50% glycerol
Concentration:	lot specific
Purification:	Antigen affinity purification
Conjugation:	Unconjugated
Storage:	Store at -20°C as received.
Stability:	Stable for 12 months from date of receipt.
Gene Name:	CKLF like MARVEL transmembrane domain containing 6
Database Link:	NP_060271 Entrez Gene 54918 Human Q9NX76
Background:	This gene belongs to the chemokine-like factor gene superfamily; a novel family that is similar to the chemokine and transmembrane 4 superfamilies. This gene is one of several chemokine-like factor genes located in a cluster on chromosome 3. This gene is widely expressed in many tissues; but the exact function of the encoded protein is unknown.
Synonyms:	CKLFSF6; PRO2219



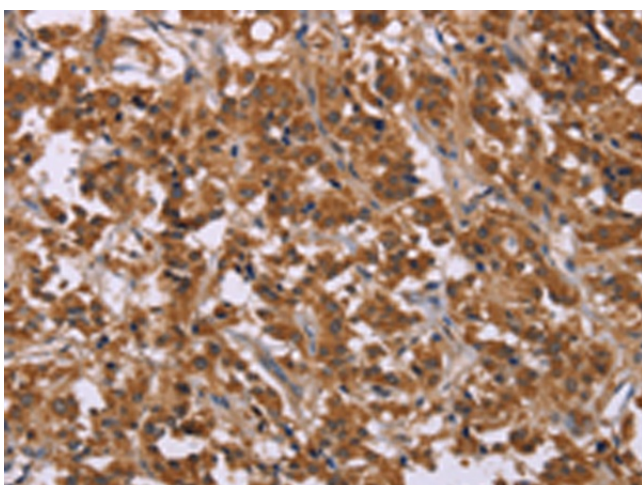
[View online »](#)

Protein Families: Transmembrane

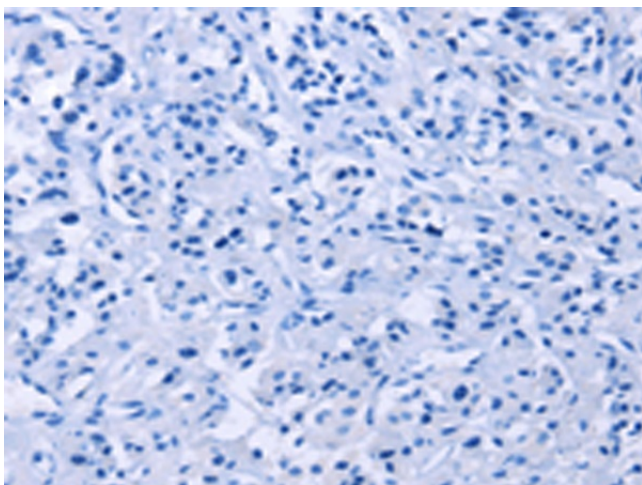
Product images:



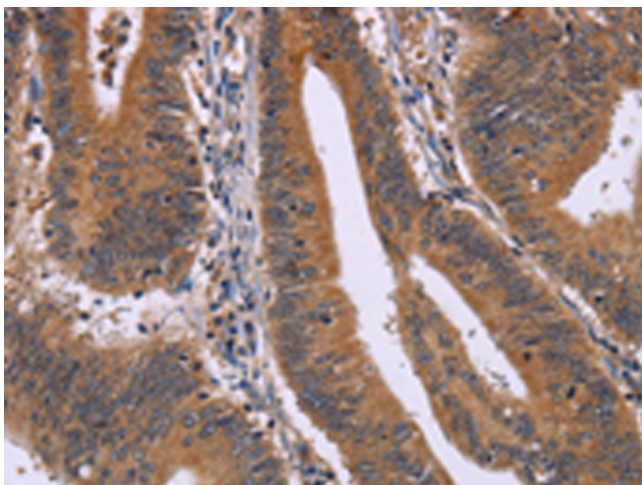
Gel: 10%SDS-PAGE
Lysate: 40 μ g
Lane: Raji cells
Primary antibody: TA322304 (CMTM6 Antibody)
at dilution 1/200
Secondary antibody: Goat anti rabbit IgG at
1/8000 dilution
Exposure time: 1 minute



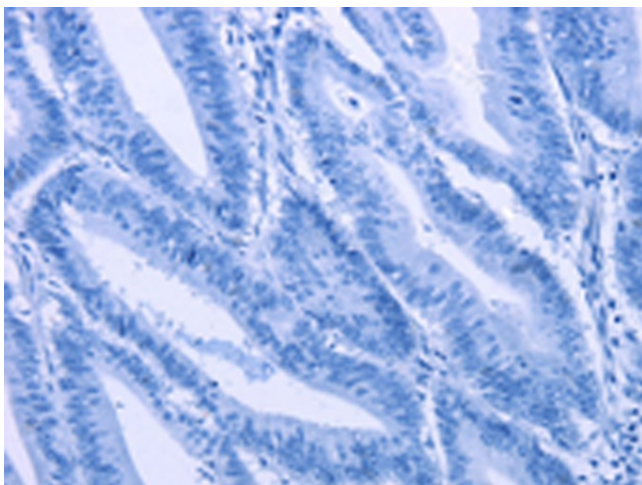
Immunohistochemistry of paraffin-embedded
Human thyroid cancer tissue using TA322304
(CMTM6 Antibody) at dilution 1/30 (Original
magnification: \times 200)



Immunohistochemistry of paraffin-embedded Human thyroid cancer tissue using TA322304 (CMTM6 Antibody) at dilution 1/30, treated with synthetic peptide. (Original magnification: ×200)



Immunohistochemistry of paraffin-embedded Human colon cancer tissue using TA322304 (CMTM6 Antibody) at dilution 1/30 (Original magnification: ×200)



Immunohistochemistry of paraffin-embedded Human colon cancer tissue using TA322304 (CMTM6 Antibody) at dilution 1/30, treated with synthetic peptide. (Original magnification: ×200)