

Product datasheet for **TA322303**

CMTM6 Rabbit Polyclonal Antibody

Product data:

Product Type:	Primary Antibodies
Applications:	IHC, WB
Recommended Dilution:	WB: 500-2000 WB positive control: Raji, HepG2 and 293T cell lysates IHC: 50-100 Positive control: Human tonsil Predicted cell location: Cytoplasm
Reactivity:	Human
Host:	Rabbit
Isotype:	IgG
Clonality:	Polyclonal
Immunogen:	Synthetic peptide peptide corresponding to a region derived from 170-182 amino acids of human CKLF-like MARVEL transmembrane domain containing 6
Formulation:	PBS pH7.3, 0.05% NaN ₃ , 50% glycerol
Concentration:	lot specific
Purification:	Antigen affinity purification
Conjugation:	Unconjugated
Storage:	Store at -20°C as received.
Stability:	Stable for 12 months from date of receipt.
Predicted Protein Size:	20 kDa
Gene Name:	CKLF like MARVEL transmembrane domain containing 6
Database Link:	NP_060271 Entrez Gene 54918 Human Q9NX76
Background:	This gene belongs to the chemokine-like factor gene superfamily; a novel family that is similar to the chemokine and transmembrane 4 superfamilies. This gene is one of several chemokine-like factor genes located in a cluster on chromosome 3. This gene is widely expressed in many tissues; but the exact function of the encoded protein is unknown.?

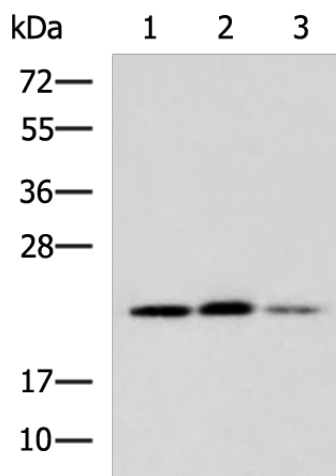


[View online »](#)

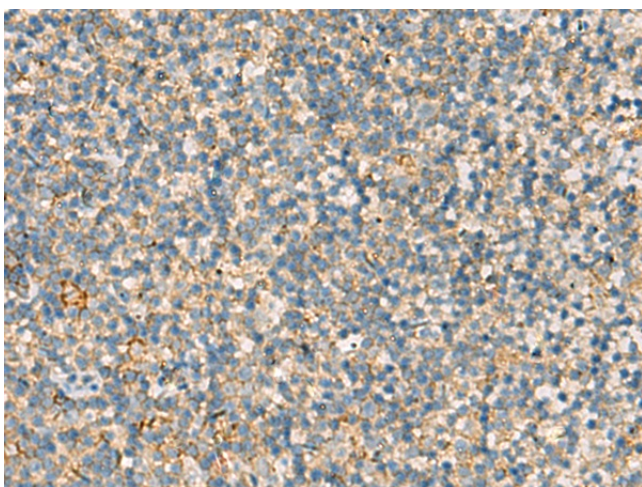
Synonyms: CKLFSF6; PRO2219

Protein Families: Transmembrane

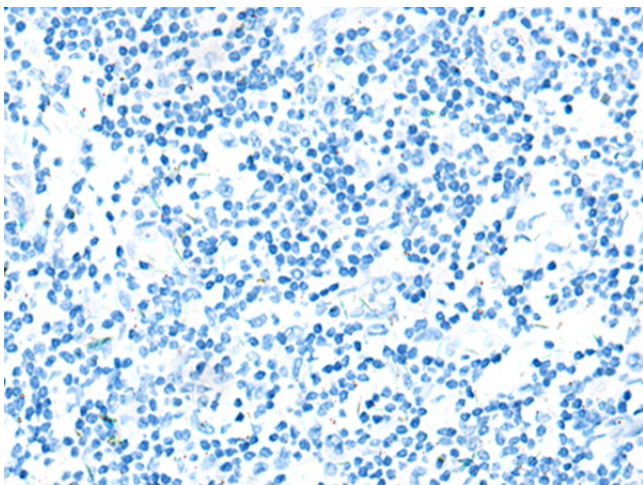
Product images:



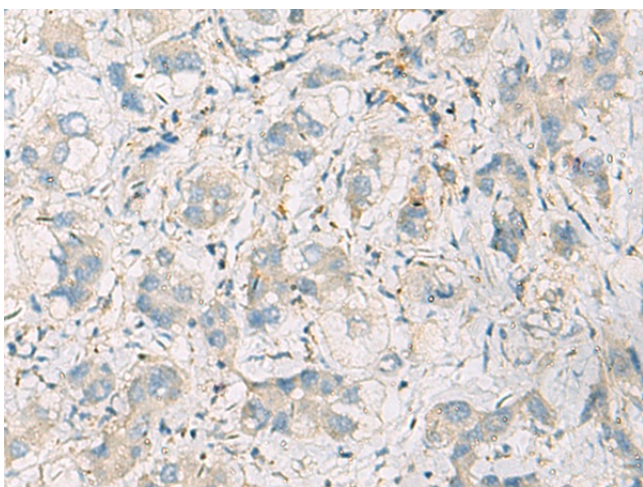
Gel: 12%SDS-PAGE
 Lysate: 40 µg
 Lane 1-3: Raji
 HepG2 and 293T cell lysates
 Primary antibody: TA322303 (CMTM6 Antibody)
 at dilution 1/550
 Secondary antibody: Goat anti rabbit IgG at
 1/5000 dilution
 Exposure time: 3 minutes



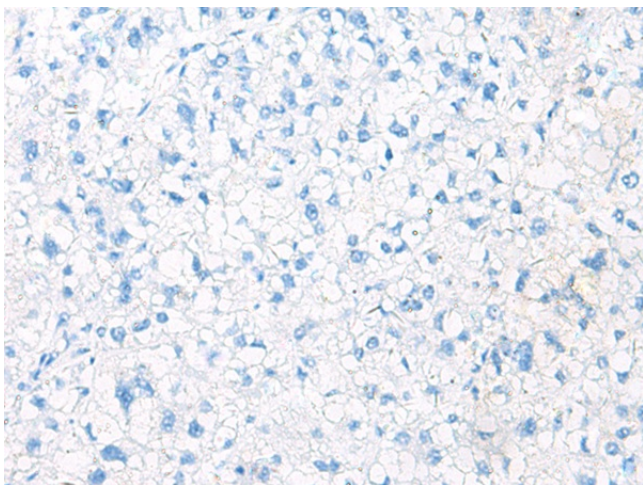
Immunohistochemistry of paraffin-embedded
 Human tonsil tissue using TA322303 (CMTM6
 Antibody) at dilution 1/25 (Original magnification:
 ×200)



Immunohistochemistry of paraffin-embedded Human tonsil tissue using TA322303 (CMTM6 Antibody) at dilution 1/25, treated with synthetic peptide. (Original magnification: $\times 200$)



Immunohistochemistry of paraffin-embedded Human liver cancer tissue using TA322303 (CMTM6 Antibody) at dilution 1/25 (Original magnification: $\times 200$)



Immunohistochemistry of paraffin-embedded Human liver cancer tissue using TA322303 (CMTM6 Antibody) at dilution 1/25, treated with synthetic peptide. (Original magnification: $\times 200$)