

## Product datasheet for **TA322300S**

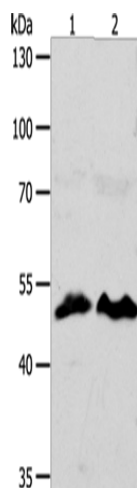
### ZWILCH Rabbit Polyclonal Antibody

#### Product data:

Product Type:	Primary Antibodies
Applications:	WB
Recommended Dilution:	WB: 1000-5000 WB positive control: HT-29 and hela cells
Reactivity:	Human, Mouse
Host:	Rabbit
Isotype:	IgG
Clonality:	Polyclonal
Immunogen:	Synthetic peptide corresponding to a region derived from 249-450 amino acids of human zwilch kinetochore protein
Formulation:	PBS pH7.3, 0.05% NaN <sub>3</sub> , 50% glycerol
Purification:	Antigen affinity purification
Conjugation:	Unconjugated
Storage:	Store at -20°C as received.
Stability:	Stable for 12 months from date of receipt.
Predicted Protein Size:	67 kDa
Gene Name:	zwilch kinetochore protein
Database Link:	<a href="#">NP_060445</a> <a href="#">Entrez Gene 68014 Mouse</a> <a href="#">Entrez Gene 55055 Human</a> <a href="#">Q9H900</a>
Background:	This protein is essential component of the mitotic checkpoint; which prevents cells from prematurely exiting mitosis. And it is required for the assembly of the dynein-dynactin and MAD1-MAD2 complexes onto kinetochores. ZWILCH gene is deleted in a patient suffering from colorectal cancer with chromosomal instability.
Synonyms:	hZwilch; KNTC1AP



[View online »](#)

**Product images:**

Gel: 8%SDS-PAGE

Lysate: 40 µg

Lane 1-2: HT29 cells

hela cells

Primary antibody: [TA322300] (ZWILCH Antibody)  
at dilution 1/1750

Secondary antibody: Goat anti rabbit IgG at  
1/8000 dilution

Exposure time: 3 seconds