

Product datasheet for **TA322299**

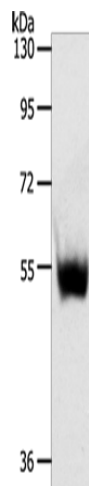
Znt6 (SLC30A6) Rabbit Polyclonal Antibody

Product data:

Product Type:	Primary Antibodies
Applications:	WB
Recommended Dilution:	WB: 500-2000 WB positive control: Mouse thymus tissue
Reactivity:	Human, Mouse
Host:	Rabbit
Isotype:	IgG
Clonality:	Polyclonal
Immunogen:	Synthetic peptide corresponding to a region derived from 121-140 amino acids of human solute carrier family 30 (zinc transporter), member 6
Formulation:	PBS pH7.3, 0.05% NaN ₃ , 50% glycerol
Concentration:	lot specific
Purification:	Antigen affinity purification
Conjugation:	Unconjugated
Storage:	Store at -20°C as received.
Stability:	Stable for 12 months from date of receipt.
Predicted Protein Size:	51 kDa
Gene Name:	solute carrier family 30 member 6
Database Link:	NP_060434 Entrez Gene 210148 Mouse Entrez Gene 55676 Human Q6NXT4
Background:	Zinc functions as a cofactor for numerous enzymes; nuclear factors; and hormones and as an intra- and intercellular signal ion. Members of the zinc transporter (ZNT)/SLC30 subfamily of the cation diffusion facilitator family; such as SLC30A6; permit cellular efflux of zinc.
Synonyms:	MST103; MSTP103; ZNT6
Protein Families:	Transmembrane



[View online »](#)

Product images:

Gel: 10%SDS-PAGE
Lysate: 30 µg
Lane: Mouse thymus tissue
Primary antibody: TA322299 (SLC30A6 Antibody)
at dilution 1/223
Secondary antibody: Goat anti rabbit IgG at
1/8000 dilution
Exposure time: 2 minutes