

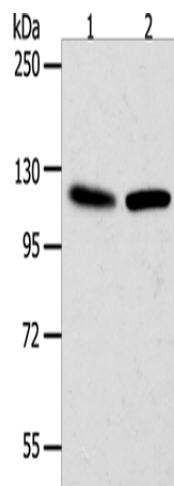
## Product datasheet for **TA322298S**

### WDR6 Rabbit Polyclonal Antibody

#### Product data:

Product Type:	Primary Antibodies
Applications:	WB
Recommended Dilution:	WB: 500-2000 WB positive control: Hela and NIH/3T3 cells
Reactivity:	Human, Mouse, Rat
Host:	Rabbit
Isotype:	IgG
Clonality:	Polyclonal
Immunogen:	Synthetic peptide corresponding to a region derived from 188-215 amino acids of human WD repeat domain 6
Formulation:	PBS pH7.3, 0.05% NaN <sub>3</sub> , 50% glycerol
Purification:	Antigen affinity purification
Conjugation:	Unconjugated
Storage:	Store at -20°C as received.
Stability:	Stable for 12 months from date of receipt.
Predicted Protein Size:	122 kDa
Gene Name:	WD repeat domain 6
Database Link:	<a href="#">NP_060501</a> <a href="#">Entrez Gene 83669 Mouse</a> <a href="#">Entrez Gene 301007 Rat</a> <a href="#">Entrez Gene 11180 Human</a> <a href="#">Q9NNW5</a>
Background:	This gene encodes a member of the WD repeat protein family. WD repeats are minimally conserved regions of approximately 40 amino acids typically bracketed by gly-his and trp-aspartate (GH-WD); which may facilitate formation of heterotrimeric or multiprotein complexes. The encoded protein interacts with serine/threonine kinase 11; and is implicated in cell growth arrest.
Synonyms:	FLJ10218; FLJ52552; FLJ56107; MGC126756; MGC142027


[View online »](#)

**Product images:**

Gel: 8%SDS-PAGE

Lysate: 40 µg

Lane 1-2: HeLa cells

NIH/3T3 cells

Primary antibody: [TA322298] (WDR6 Antibody) at dilution 1/1000

Secondary antibody: Goat anti rabbit IgG at 1/8000 dilution

Exposure time: 2 minutes