

Product datasheet for **TA322297S**

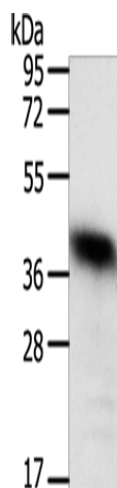
WDR74 Rabbit Polyclonal Antibody

Product data:

| | |
|-------------------------|---|
| Product Type: | Primary Antibodies |
| Applications: | WB |
| Recommended Dilution: | WB: 200-1000 WB positive control: Human liver cancer tissue |
| Reactivity: | Human, Mouse |
| Host: | Rabbit |
| Isotype: | IgG |
| Clonality: | Polyclonal |
| Immunogen: | Synthetic peptide corresponding to a region derived from 366-385 amino acids of human WD repeat domain 74 |
| Formulation: | PBS pH7.3, 0.05% NaN ₃ , 50% glycerol |
| Purification: | Antigen affinity purification |
| Conjugation: | Unconjugated |
| Storage: | Store at -20°C as received. |
| Stability: | Stable for 12 months from date of receipt. |
| Predicted Protein Size: | 42 kDa |
| Gene Name: | WD repeat domain 74 |
| Database Link: | NP_060563 Entrez Gene 107071 Mouse Entrez Gene 54663 Human Q6RFH5 |
| Background: | This protein contains six WD repeats. The subcellular location of this protein is Nucleus. Wdr74 is required for RNA transcription; processing and/or stability during preimplantation development and is an essential gene in the mouse. |
| Synonyms: | FLJ10439; FLJ21730 |



[View online »](#)

Product images:

Gel: 10%SDS-PAGE
Lysate: 40 μ g
Lane: Human liver cancer tissue
Primary antibody: [TA322297] (WDR74 Antibody)
at dilution 1/450
Secondary antibody: Goat anti rabbit IgG at
1/8000 dilution
Exposure time: 10 minutes