

Product datasheet for **TA322297**

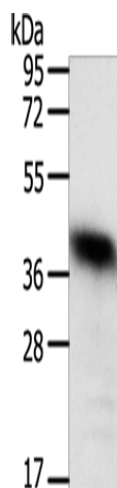
WDR74 Rabbit Polyclonal Antibody

Product data:

Product Type:	Primary Antibodies
Applications:	WB
Recommended Dilution:	WB: 200-1000 WB positive control: Human liver cancer tissue
Reactivity:	Human, Mouse
Host:	Rabbit
Isotype:	IgG
Clonality:	Polyclonal
Immunogen:	Synthetic peptide corresponding to a region derived from 366-385 amino acids of human WD repeat domain 74
Formulation:	PBS pH7.3, 0.05% NaN ₃ , 50% glycerol
Concentration:	lot specific
Purification:	Antigen affinity purification
Conjugation:	Unconjugated
Storage:	Store at -20°C as received.
Stability:	Stable for 12 months from date of receipt.
Predicted Protein Size:	42 kDa
Gene Name:	WD repeat domain 74
Database Link:	NP_060563 Entrez Gene 107071 Mouse Entrez Gene 54663 Human Q6RFH5
Background:	This protein contains six WD repeats. The subcellular location of this protein is Nucleus. Wdr74 is required for RNA transcription; processing and/or stability during preimplantation development and is an essential gene in the mouse.
Synonyms:	FLJ10439; FLJ21730



[View online »](#)

Product images:

Gel: 10%SDS-PAGE

Lysate: 40 μ g

Lane: Human liver cancer tissue

Primary antibody: TA322297 (WDR74 Antibody)
at dilution 1/450

Secondary antibody: Goat anti rabbit IgG at
1/8000 dilution

Exposure time: 10 minutes